

LEGEND

	EXISTING	PROPOSED
SANITARY SEWER		
STORM SEWER		
WATER MAIN		
MAINTENANCE HOLE		
CATCH BASIN (MH)		
CATCH BASIN		
VALVE		
HYDRANT		
TYPICAL FITTINGS		
LIGHT POLE		
UTILITY POLE		
POWER UTILITY BOX		
TELEPHONE UTILITY POLE		
OVERHEAD UTILITY LINE		
UNDERGROUND UTILITY LINE		
VERTICAL CURB & GUTTER		
ROLLED CURB & GUTTER		
BUILDINGS		
ROADWAYS		
ROADWAYS (GRAVEL)		
CONCRETE SIDEWALK		
LANDSCAPE AREA		
FENCE (CHAIN-LINK)		
FENCE (WOOD)		
BUSHLINE		
TREE		
MAJOR CONTOURS		
MINOR CONTOURS		
SPOT ELEVATIONS		
SURFACE DRAINAGE		
TEXT STYLE	EXISTING	PROPOSED

GENERAL NOTES

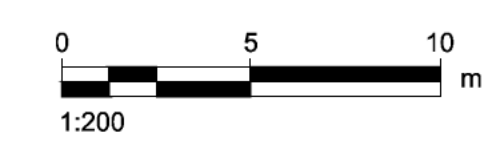
1. ALL EXISTING UNDERGROUND INFORMATION, INCLUDING BUT NOT LIMITED TO PIPE TYPES, LOCATIONS AND INVERTS, ARE BASED ON PROVIDED RECORD DRAWINGS AND MUST BE VERIFIED PRIOR TO CONSTRUCTION.
2. ALL EXISTING WATER AND SEWER PIPING IS ASSUMED TO BE INSULATED UNLESS OTHERWISE STATED.
3. ALL PROPOSED WATER AND SEWER PIPING TO BE INSTALLED IS TO BE INSULATED PIPE UNLESS OTHERWISE STATED.

PIPE ABBREVIATION:

- SAN S. = SANITARY SEWER
- STM S. = STORM SEWER
- W.M. = WATER MAIN
- SFM = SANITARY FORCE MAIN

PIPE TYPE:

- HDPE = HIGH DENSITY POLYETHYLENE
- PVC = POLY VINYL CHLORIDE
- S.S. = STAINLESS STEEL
- D.I. = DUCTILE IRON
- C.M.P. = CORRUGATED METAL PIPE
- STEEL = SOLID WALL STEEL PIPE



NOT FOR CONSTRUCTION

NOTICE:
 THE EXISTENCE, LOCATION AND ELEVATION OF UTILITIES AND/OR CONCEALED STRUCTURES AT THE PROJECT SITE ARE NOT GUARANTEED BY AECOM CANADA LTD.
 THE CONTRACTOR IS RESPONSIBLE FOR DETERMINING THE EXISTENCE, LOCATION AND ELEVATION OF ALL SUCH UTILITIES AND/OR STRUCTURES AND IS RESPONSIBLE FOR NOTIFYING THE APPROPRIATE COMPANY, DEPARTMENT OR PERSON(S) OF ITS INTENTION TO CARRY OUT ITS OPERATIONS.

REGISTRATION

ISSUE/REVISION

NO.	DATE	DESCRIPTION
B	2025-12-19	Issued For DP Submission
A	2025-09-03	Issued For Review
I/R	DATE	DESCRIPTION

PROJECT NUMBER

60759464

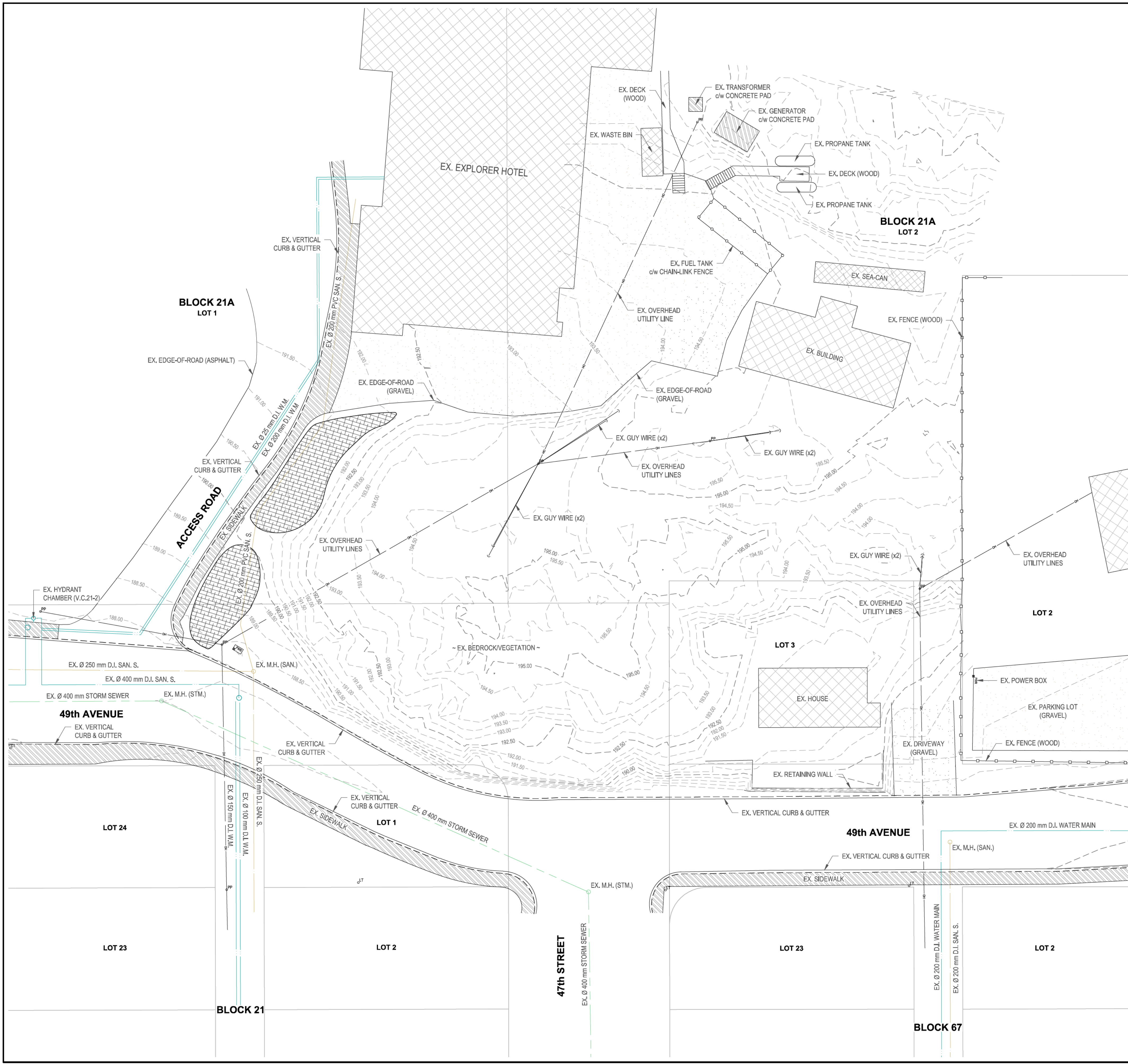
SHEET TITLE

Site Plan
 Existing Site Conditions

SHEET NUMBER

01-C-101

This drawing has been prepared for the use of AECOM's client and may not be used, reproduced or relied upon by third parties, except as agreed by AECOM and its client, as required by law or for use by governmental reviewing agencies. AECOM accepts no responsibility, and denies any liability whatsoever, to any party that modifies this drawing without AECOM's express written consent. Do not scale this document. All measurements must be obtained from state dimensions.



LEGEND

	EXISTING	PROPOSED
SANITARY SEWER		
STORM SEWER		
WATER MAIN		
MAINTENANCE HOLE		
CATCH BASIN (MH)		
CATCH BASIN		
VALVE		
HYDRANT		
TYPICAL FITTINGS		
LIGHT POLE		
UTILITY POLE		
POWER UTILITY BOX		
TELEPHONE UTILITY POLE		
OVERHEAD UTILITY LINE		
UNDERGROUND UTILITY LINE		
VERTICAL CURB & GUTTER		
ROLLED CURB & GUTTER		
BUILDINGS		
ROADWAYS		
ROADWAYS (GRAVEL)		
CONCRETE SIDEWALK		
LANDSCAPE AREA		
FENCE (CHAIN-LINK)		
FENCE (WOOD)		
BUSHLINE		
TREE		
MAJOR CONTOURS		
MINOR CONTOURS		
SPOT ELEVATIONS		
SURFACE DRAINAGE		
TEXT STYLE	EXISTING	PROPOSED

GENERAL NOTES

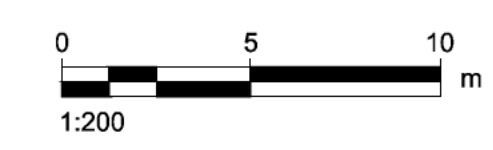
1. ALL EXISTING UNDERGROUND INFORMATION, INCLUDING BUT NOT LIMITED TO PIPE TYPES, LOCATIONS AND INVERTS, ARE BASED ON PROVIDED RECORD DRAWINGS AND MUST BE VERIFIED PRIOR TO CONSTRUCTION.
2. ALL EXISTING WATER AND SEWER PIPING IS ASSUMED TO BE INSULATED UNLESS OTHERWISE STATED.
3. ALL PROPOSED WATER AND SEWER PIPING TO BE INSTALLED IS TO BE INSULATED PIPE UNLESS OTHERWISE STATED.

PIPE ABBREVIATION:

- SAN S. = SANITARY SEWER
- STM S. = STORM SEWER
- W.M. = WATER MAIN
- SFM = SANITARY FORCE MAIN

PIPE TYPE:

- HDPE = HIGH DENSITY POLYETHYLENE
- PVC = POLY VINYL CHLORIDE
- S.S. = STAINLESS STEEL
- D.I. = DUCTILE IRON
- C.M.P. = CORRUGATED METAL PIPE
- STEEL = SOLID WALL STEEL PIPE



CLIENT

CONSULTANT

AECOM
 200-2100 8th Street East
 Saskatoon, SK S7H 0V1
 639.398.8150 tel 306.700.2428 fax
 www.aecom.com

NOT FOR CONSTRUCTION

NOTICE:
 THE EXISTENCE, LOCATION AND ELEVATION OF UTILITIES AND/OR CONCEALED STRUCTURES AT THE PROJECT SITE ARE NOT GUARANTEED BY AECOM CANADA LTD.
 THE CONTRACTOR IS RESPONSIBLE FOR DETERMINING THE EXISTENCE, LOCATION AND ELEVATION OF ALL SUCH UTILITIES AND/OR STRUCTURES AND IS RESPONSIBLE FOR NOTIFYING THE APPROPRIATE COMPANY, DEPARTMENT OR PERSON(S) OF ITS INTENTION TO CARRY OUT ITS OPERATIONS.

REGISTRATION

ISSUE/REVISION

I/R	DATE	DESCRIPTION
B	2025-12-19	Issued For DP Submission
A	2025-09-03	Issued For Review

PROJECT NUMBER

60759464

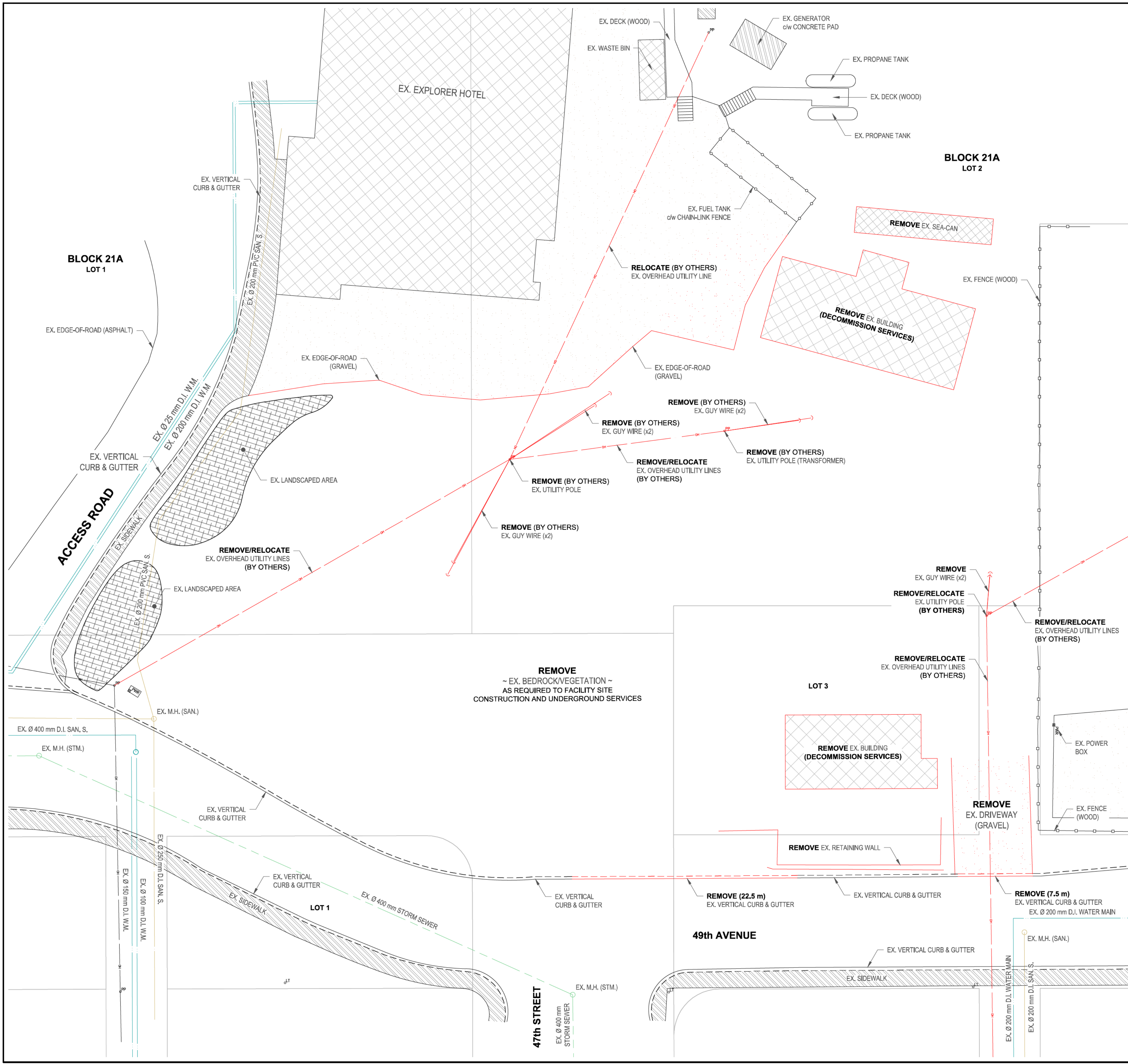
SHEET TITLE

Site Plan
 Existing Grading Plan

SHEET NUMBER

01-C-102

This drawing has been prepared for the use of AECOM's client and may not be used, reproduced or relied upon by third parties, except as agreed by AECOM and its client, as required by law or for use by governmental reviewing agencies. AECOM accepts no responsibility, and denies any liability whatsoever, to any party that modifies this drawing without AECOM's express written consent. All measurements must be obtained from state dimensions.



LEGEND

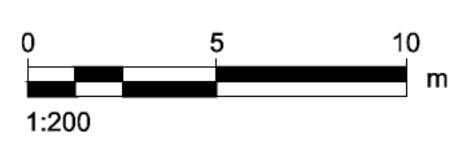
	EXISTING	PROPOSED
SANITARY SEWER		
STORM SEWER		
WATER MAIN		
MAINTENANCE HOLE		
CATCH BASIN (MH)		
CATCH BASIN		
VALVE		
HYDRANT		
TYPICAL FITTINGS		
LIGHT POLE		
UTILITY POLE		
POWER UTILITY BOX		
TELEPHONE UTILITY POLE		
OVERHEAD UTILITY LINE		
UNDERGROUND UTILITY LINE		
VERTICAL CURB & GUTTER		
ROLLED CURB & GUTTER		
BUILDINGS		
ROADWAYS		
ROADWAYS (GRAVEL)		
CONCRETE SIDEWALK		
LANDSCAPE AREA		
FENCE (CHAIN-LINK)		
FENCE (WOOD)		
BUSHLINE		
TREE		
MAJOR CONTOURS		
MINOR CONTOURS		
SPOT ELEVATIONS		
SURFACE DRAINAGE		
TEXT STYLE	EXISTING	PROPOSED

GENERAL NOTES

1. ALL EXISTING UNDERGROUND INFORMATION, INCLUDING BUT NOT LIMITED TO PIPE TYPES, LOCATIONS AND INVERTS, ARE BASED ON PROVIDED RECORD DRAWINGS AND MUST BE VERIFIED PRIOR TO CONSTRUCTION.
2. ALL EXISTING WATER AND SEWER PIPING IS ASSUMED TO BE INSULATED UNLESS OTHERWISE STATED.
3. ALL PROPOSED WATER AND SEWER PIPING TO BE INSTALLED IS TO BE INSULATED PIPE UNLESS OTHERWISE STATED.

PIPE ABBREVIATION:
 SAN S. = SANITARY SEWER
 STM S. = STORM SEWER
 W.M. = WATER MAIN
 SFM = SANITARY FORCE MAIN

PIPE TYPE:
 HDPE = HIGH DENSITY POLYETHYLENE
 PVC = POLY VINYL CHLORIDE
 S.S. = STAINLESS STEEL
 D.I. = DUCTILE IRON
 C.M.P. = CORRUGATED METAL PIPE
 STEEL = SOLID WALL STEEL PIPE



NOT FOR CONSTRUCTION

NOTICE:
 THE EXISTENCE, LOCATION AND ELEVATION OF UTILITIES AND/OR CONCEALED STRUCTURES AT THE PROJECT SITE ARE NOT GUARANTEED BY AECOM CANADA LTD.
 THE CONTRACTOR IS RESPONSIBLE FOR DETERMINING THE EXISTENCE, LOCATION AND ELEVATION OF ALL SUCH UTILITIES AND/OR STRUCTURES AND IS RESPONSIBLE FOR NOTIFYING THE APPROPRIATE COMPANY, DEPARTMENT OR PERSON(S) OF ITS INTENTION TO CARRY OUT ITS OPERATIONS.

ISSUE/REVISION

I/R	DATE	DESCRIPTION
B	2025-12-19	Issued For DP Submission
A	2025-09-03	Issued For Review

This drawing has been prepared for the use of AECOM's client and may not be used, reproduced or relied upon by third parties, except as agreed by AECOM and its client, as required by law or for use by governmental reviewing agencies. AECOM accepts no responsibility, and denies any liability whatsoever, to any party that modifies this drawing without AECOM's express written consent. Do not scale this document. All measurements must be obtained from stated dimensions.

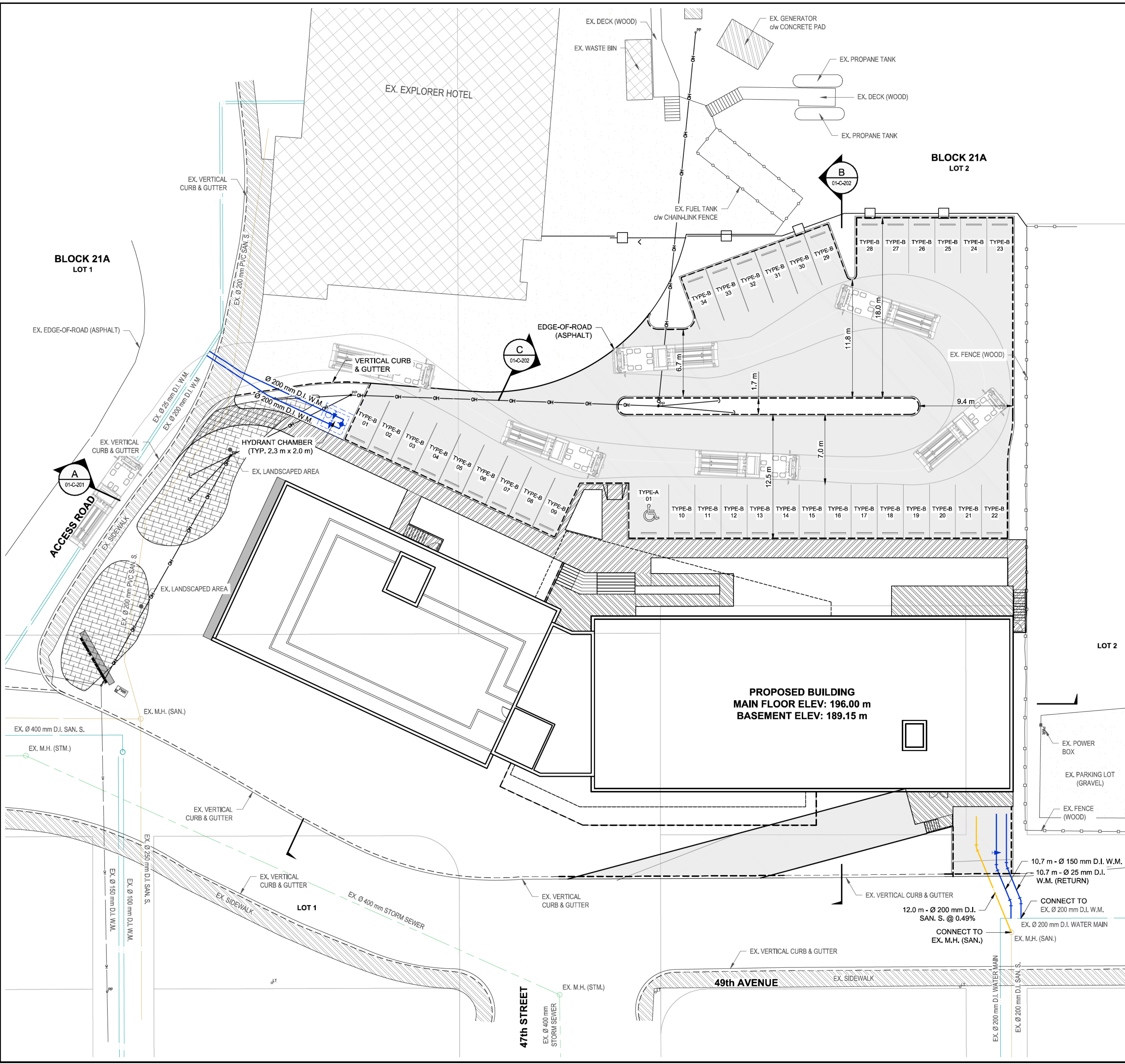
NOTICE:
 THE EXISTENCE, LOCATION AND ELEVATION OF UTILITIES AND/OR CONCEALED STRUCTURES AT THE PROJECT SITE ARE NOT GUARANTEED BY AECOM CANADA LTD.
 THE CONTRACTOR IS RESPONSIBLE FOR DETERMINING THE EXISTENCE, LOCATION AND ELEVATION OF ALL SUCH UTILITIES AND/OR STRUCTURES AND IS RESPONSIBLE FOR NOTIFYING THE APPROPRIATE COMPANY, DEPARTMENT OR PERSON(S) OF ITS INTENTION TO CARRY OUT ITS OPERATIONS.

I/R	DATE	DESCRIPTION
B	2025-12-19	Issued For DP Submission
A	2025-09-03	Issued For Review

60759464

Site Plan
 Proposed Site Layout Plan

01-C-104



LEGEND

	EXISTING	PROPOSED
SANITARY SEWER		
STORM SEWER		
WATER MAIN		
MAINTENANCE HOLE		
CATCH BASIN (MH)		
CATCH BASIN		
VALVE		
HYDRANT		
TYPICAL FITTINGS		
LIGHT POLE		
UTILITY POLE		
POWER UTILITY BOX		
TELEPHONE UTILITY POLE		
OVERHEAD UTILITY LINE		
UNDERGROUND UTILITY LINE		
VERTICAL CURB & GUTTER		
ROLLED CURB & GUTTER		
BUILDINGS		
ROADWAYS		
ROADWAYS (GRAVEL)		
CONCRETE SIDEWALK		
LANDSCAPE AREA		
FENCE (CHAIN-LINK)		
FENCE (WOOD)		
BUSHLINE		
TREE		
MAJOR CONTOURS		
MINOR CONTOURS		
SPOT ELEVATIONS		
SURFACE DRAINAGE		
TEXT STYLE	EXISTING	PROPOSED

GENERAL NOTES

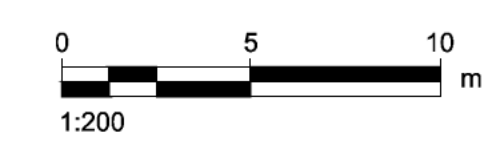
- ALL EXISTING UNDERGROUND INFORMATION, INCLUDING BUT NOT LIMITED TO PIPE TYPES, LOCATIONS AND INVERTS, ARE BASED ON PROVIDED RECORD DRAWINGS AND MUST BE VERIFIED PRIOR TO CONSTRUCTION.
- ALL EXISTING WATER AND SEWER PIPING IS ASSUMED TO BE INSULATED UNLESS OTHERWISE STATED.
- ALL PROPOSED WATER AND SEWER PIPING TO BE INSTALLED IS TO BE INSULATED PIPE UNLESS OTHERWISE STATED.

PIPE ABBREVIATION:

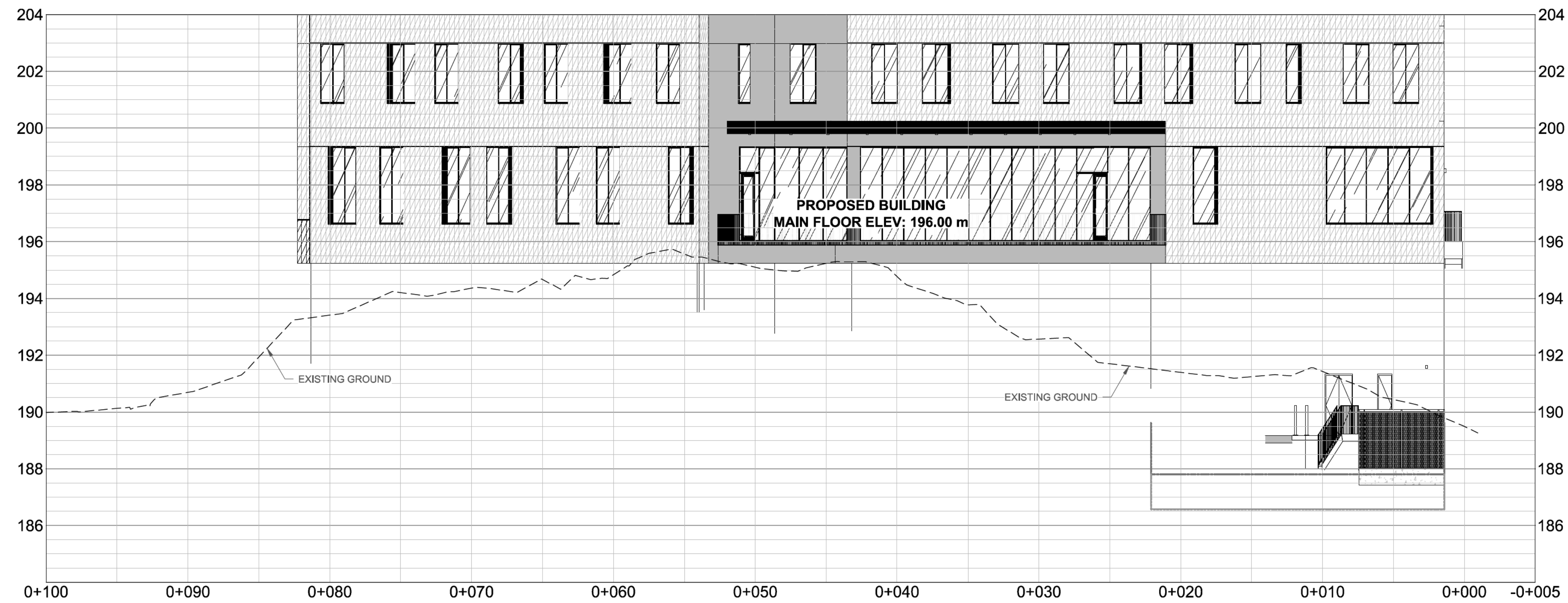
- SAN S. = SANITARY SEWER
- STM S. = STORM SEWER
- W.M. = WATER MAIN
- SFM = SANITARY FORCE MAIN

PIPE TYPE:

- HDPE = HIGH DENSITY POLYETHYLENE
- PVC = POLY VINYL CHLORIDE
- S.S. = STAINLESS STEEL
- D.I. = DUCTILE IRON
- C.M.P. = CORRUGATED METAL PIPE
- STEEL = SOLID WALL STEEL PIPE



This drawing has been prepared for the use of AECOM's client and may not be used, reproduced or relied upon by third parties, except as agreed by AECOM and its client, as required by law or for use by governmental reviewing agencies. AECOM accepts no responsibility, and denies any liability whatsoever, to any party that modifies this drawing without AECOM's express written consent. All measurements must be obtained from state dimensions.



A SECTION (WEST-EAST)
 01-C-104 Scale 1:200

NOTICE:
 THE EXISTENCE, LOCATION AND ELEVATION OF UTILITIES AND/OR CONCEALED STRUCTURES AT THE PROJECT SITE ARE NOT GUARANTEED BY AECOM CANADA LTD.
 THE CONTRACTOR IS RESPONSIBLE FOR DETERMINING THE EXISTENCE, LOCATION AND ELEVATION OF ALL SUCH UTILITIES AND/OR STRUCTURES AND IS RESPONSIBLE FOR NOTIFYING THE APPROPRIATE COMPANY, DEPARTMENT OR PERSON(S) OF ITS INTENTION TO CARRY OUT ITS OPERATIONS.

I/R	DATE	DESCRIPTION
B	2025-12-19	Issued For DP Submission
A	2025-09-03	Issued For Review

60759464

Section
 A-A'

01-C-201

This drawing has been prepared for the use of AECOM's client and may not be used, reproduced or relied upon by third parties, except as agreed by AECOM and its client, as required by law or for use by governmental reviewing agencies. AECOM accepts no responsibility, and denies any liability whatsoever, to any party that modifies this drawing without AECOM's express written consent. Do not scale this document. All measurements must be obtained from stated dimensions.

NOTICE:
THE EXISTENCE, LOCATION AND ELEVATION OF UTILITIES AND/OR CONCEALED STRUCTURES AT THE PROJECT SITE ARE NOT GUARANTEED BY AECOM CANADA LTD.
THE CONTRACTOR IS RESPONSIBLE FOR DETERMINING THE EXISTENCE, LOCATION AND ELEVATION OF ALL SUCH UTILITIES AND/OR STRUCTURES AND IS RESPONSIBLE FOR NOTIFYING THE APPROPRIATE COMPANY, DEPARTMENT OR PERSON(S) OF ITS INTENTION TO CARRY OUT ITS OPERATIONS.

I/R	DATE	DESCRIPTION
B	2025-12-19	Issued For DP Submission
A	2025-09-03	Issued For Review

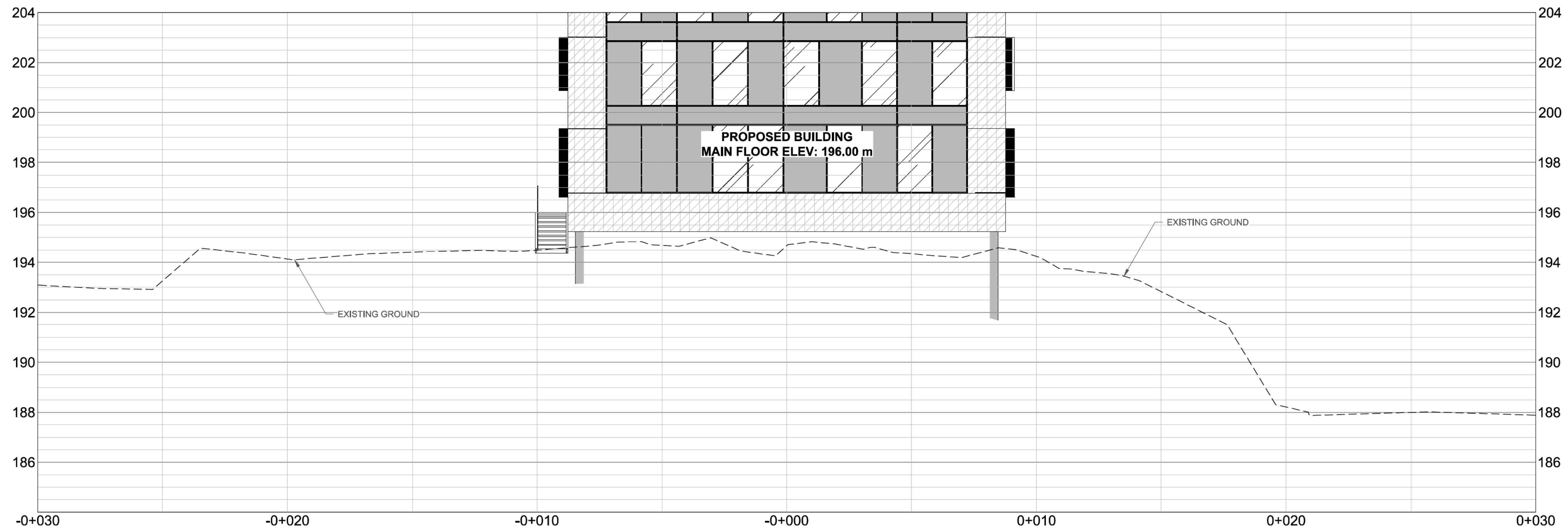
60759464

Section
B-B'
C-C'

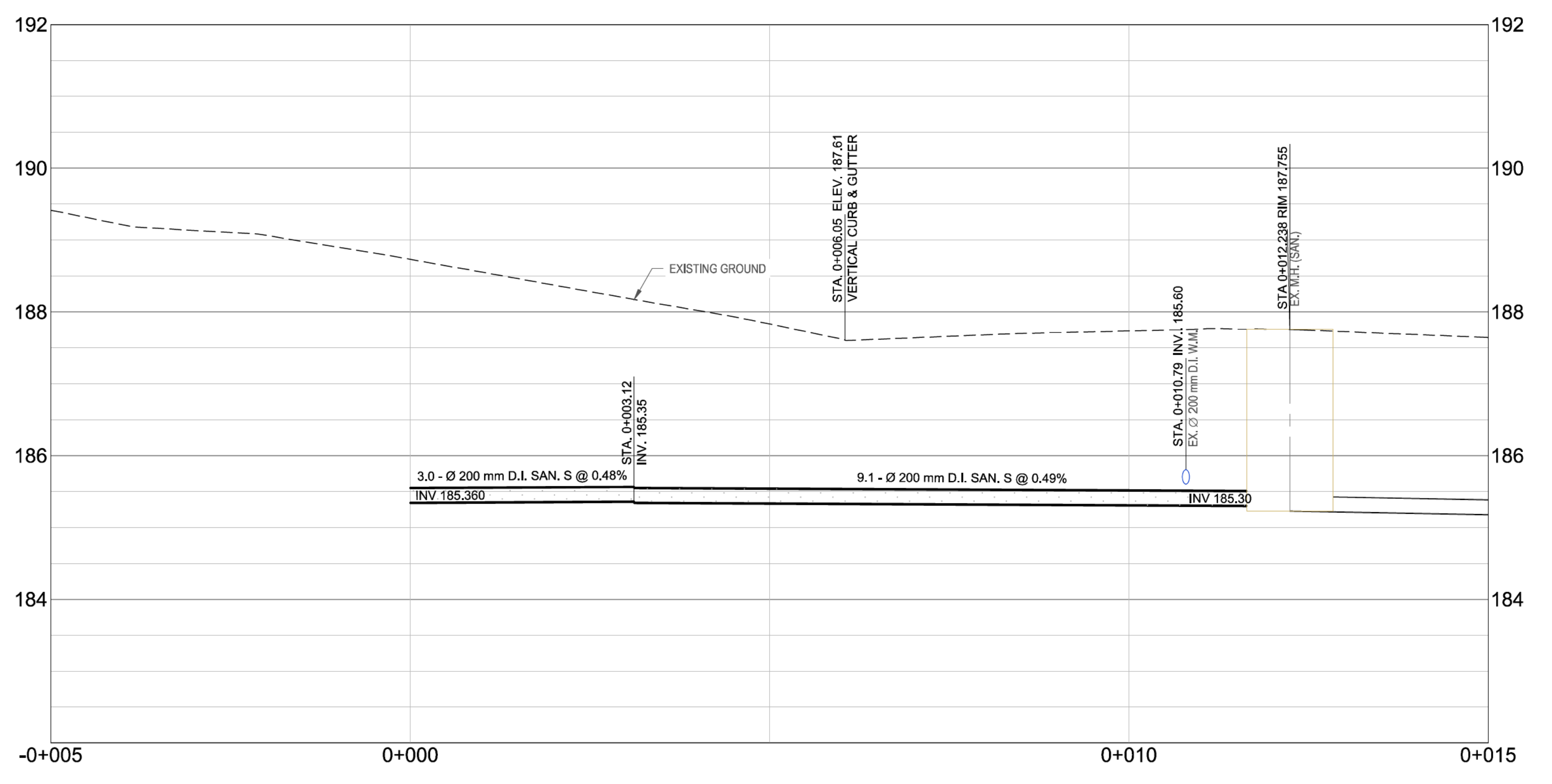
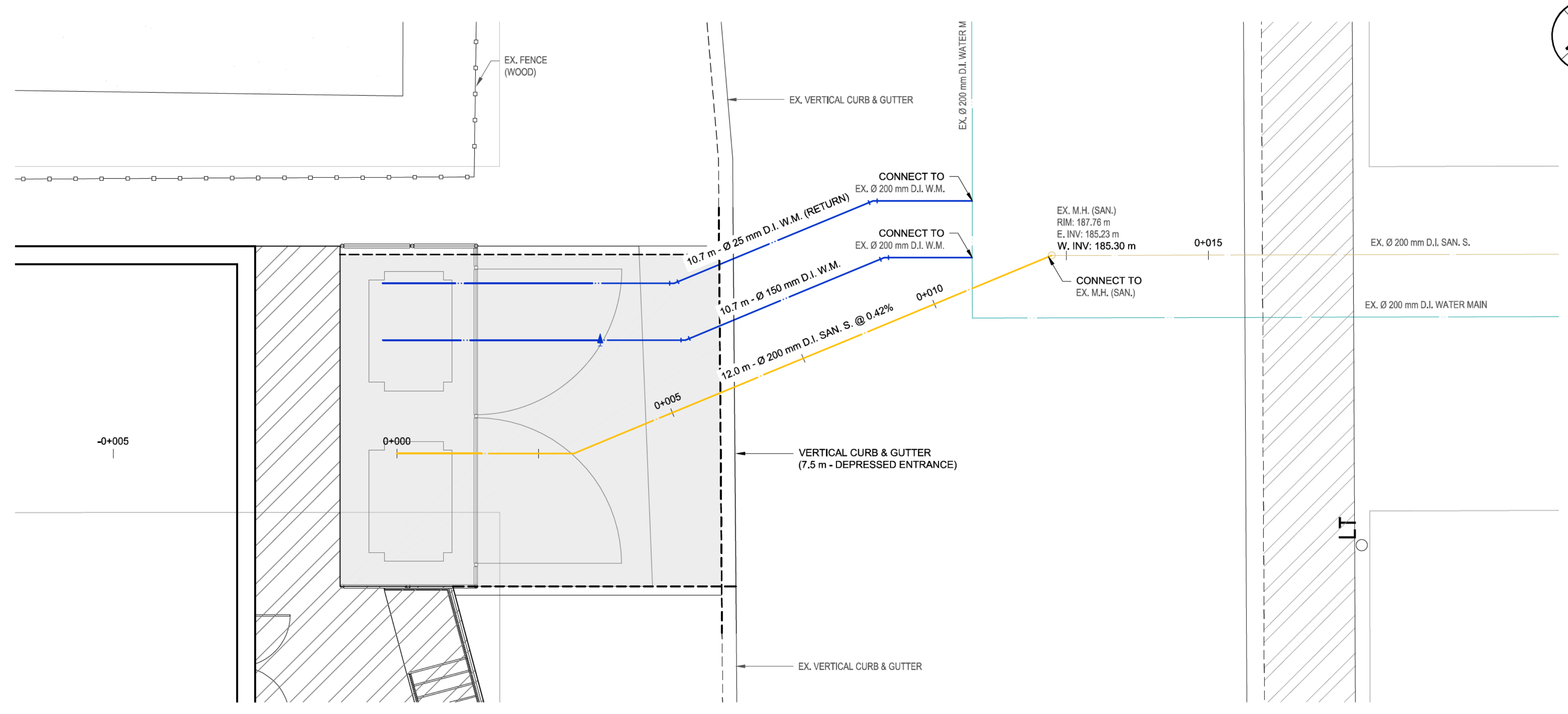
01-C-202



B | SECTION (SOUTH-NORTH)
01-C-104 | Scale 1:100



C | SECTION (NORTH-SOUTH)
01-C-104 | Scale 1:100



NOTICE:
 THE EXISTENCE, LOCATION AND ELEVATION OF UTILITIES AND/OR CONCEALED STRUCTURES AT THE PROJECT SITE ARE NOT GUARANTEED BY AECOM CANADA LTD.
 THE CONTRACTOR IS RESPONSIBLE FOR DETERMINING THE EXISTENCE, LOCATION AND ELEVATION OF ALL SUCH UTILITIES AND/OR STRUCTURES AND IS RESPONSIBLE FOR NOTIFYING THE APPROPRIATE COMPANY, DEPARTMENT OR PERSON(S) OF ITS INTENTION TO CARRY OUT ITS OPERATIONS.

I/R	DATE	DESCRIPTION
B	2025-12-19	Issued For DP Submission
A	2025-09-03	Issued For Review

60759464

Plan / Profile
 Building Services

01-C-301

This drawing has been prepared for the use of AECOM's client and may not be used, reproduced or relied upon by third parties, except as agreed by AECOM and its client, as required by law or for use by governmental reviewing agencies. AECOM accepts no responsibility, and denies any liability whatsoever, to any party that modifies this drawing without AECOM's express written consent. All measurements must be obtained from stated dimensions.