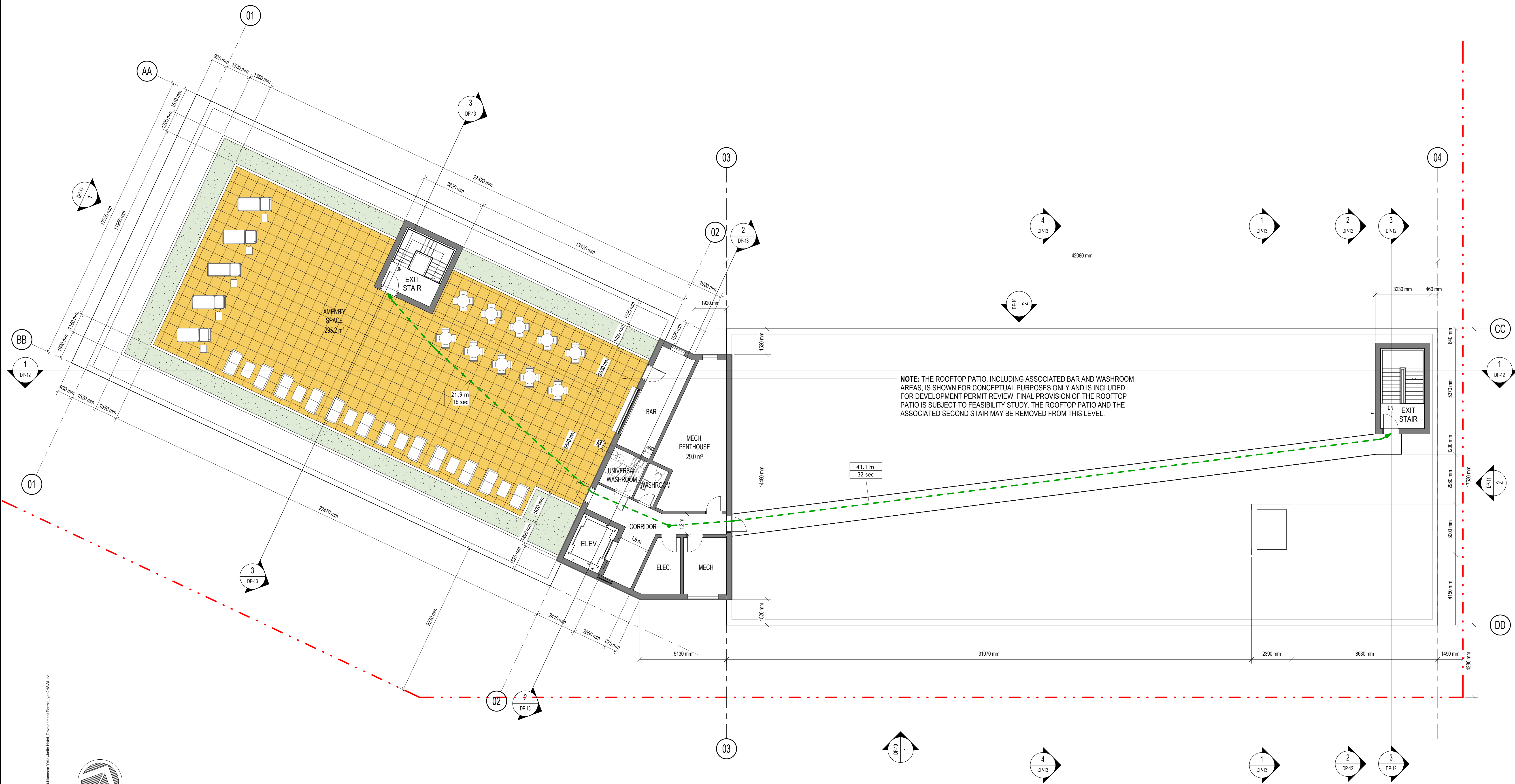


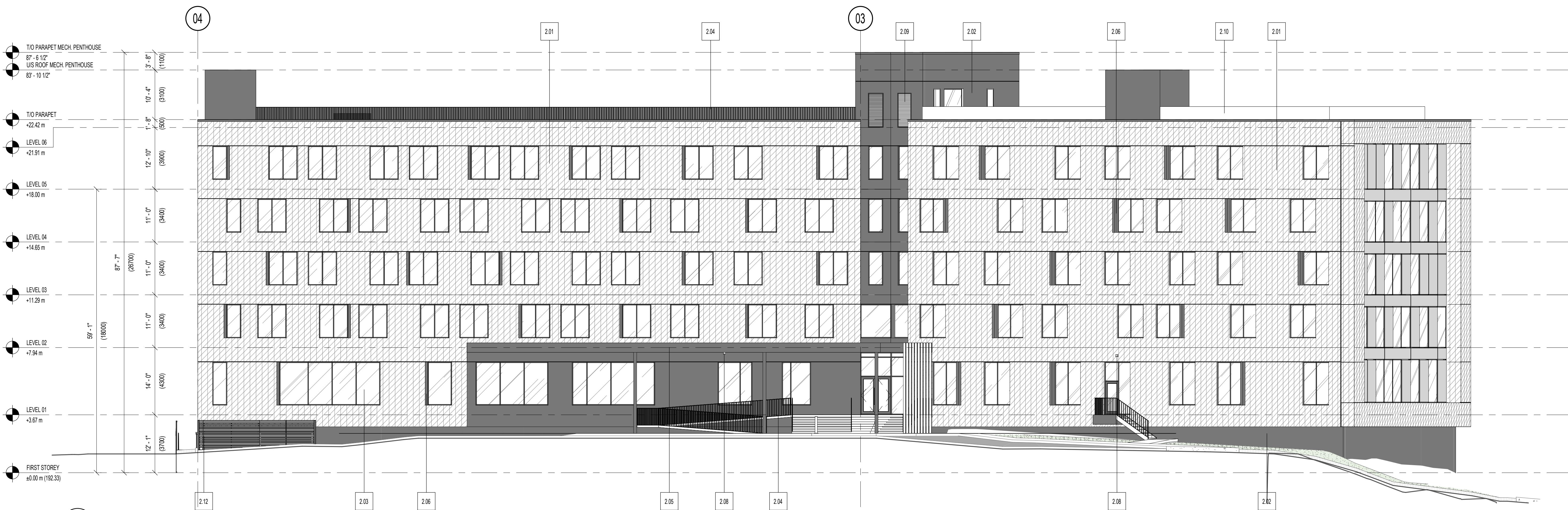
GFA 145.4 m<sup>2</sup>



NOTE: THE ROOFTOP PATIO, INCLUDING ASSOCIATED BAR AND WASHROOM AREAS, IS SHOWN FOR CONCEPTUAL PURPOSES ONLY AND IS INCLUDED FOR DEVELOPMENT PERMIT REVIEW. FINAL PROVISION OF THE ROOFTOP PATIO IS SUBJECT TO FEASIBILITY STUDY. THE ROOFTOP PATIO AND THE ASSOCIATED SECOND STAIR MAY BE REMOVED FROM THIS LEVEL.

1 DP-MECHANICAL PENTHOUSE  
1:100

C:\Users\jsteele\OneDrive - HSEA\Documents\2024\Newmarket\Yellowknife\HSEADevelopment\Permit\_1\1\DP-09.rvt



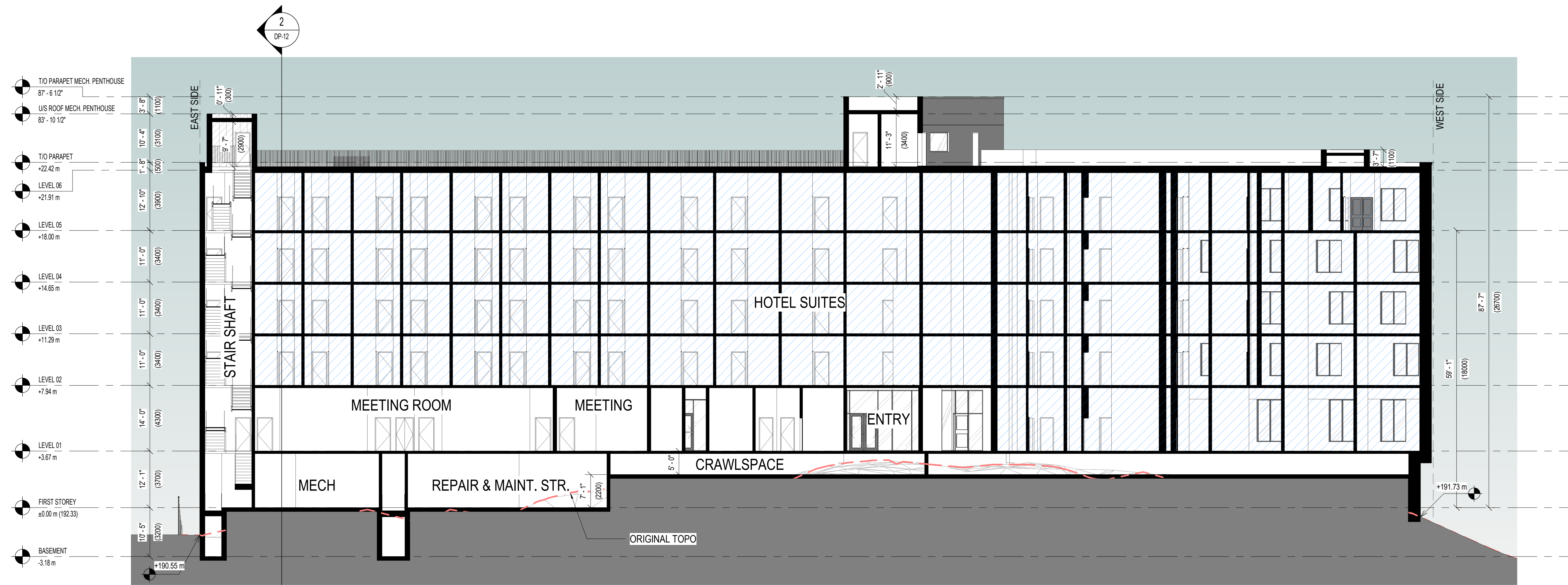
MATERIAL LEGEND	
CODE	DESCRIPTION
2.01	WOODGRAIN CLADDING
2.02	SMOOTH PANEL CLADDING: CHARCOAL
2.03	GLAZING
2.04	METAL RAILING: BLACK
2.05	CANOPY: BLACK
2.06	METAL FIN [ILLUMINATED]
2.07	LIGHT FIXTURE: BLACK
2.08	POTLIGHTS
2.09	MECH. LOUVER COLOR: CHARCOAL
2.10	PRECAST CONC. PLANTER
2.11	PROPOSED ARTWORK MURAL. FINAL LOCATION AND DESIGN TBD.
2.12	METAL FENCE COLOR: CHARCOAL

2 DP NORTH ELEVATION  
DP-10  
3/32" = 1'-0"

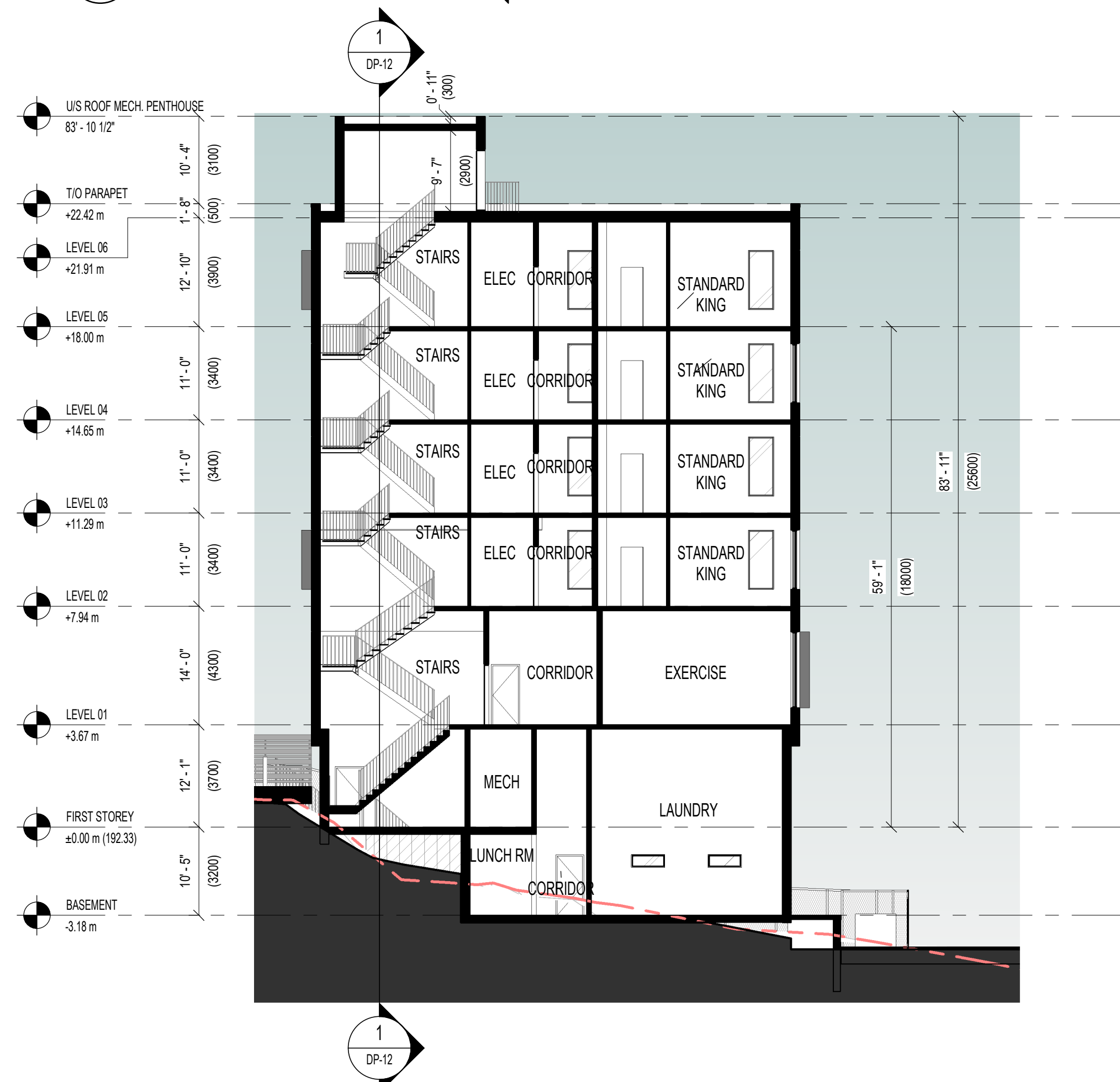


1 DP SOUTH ELEVATION  
DP-10  
3/32" = 1'-0"

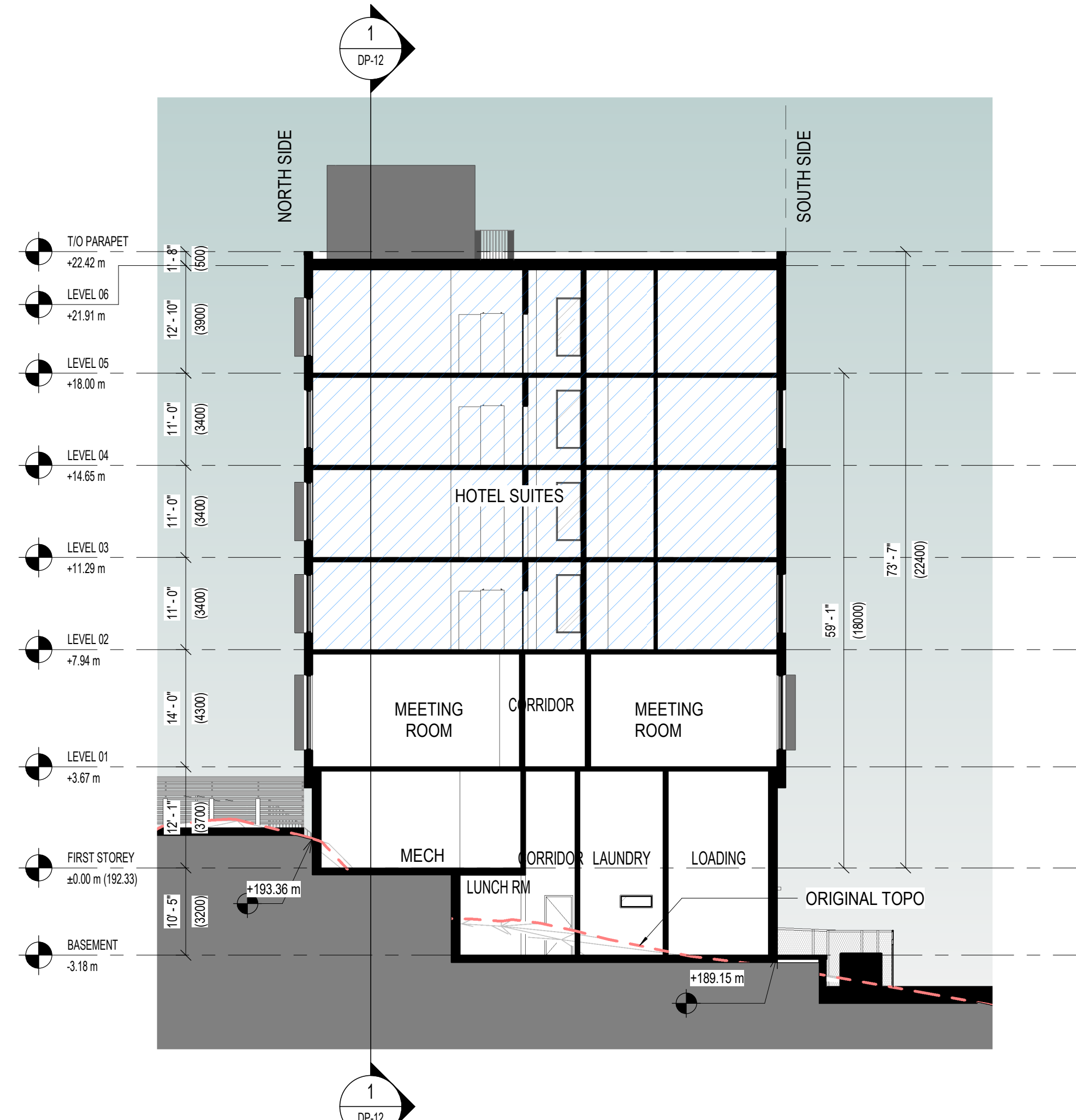




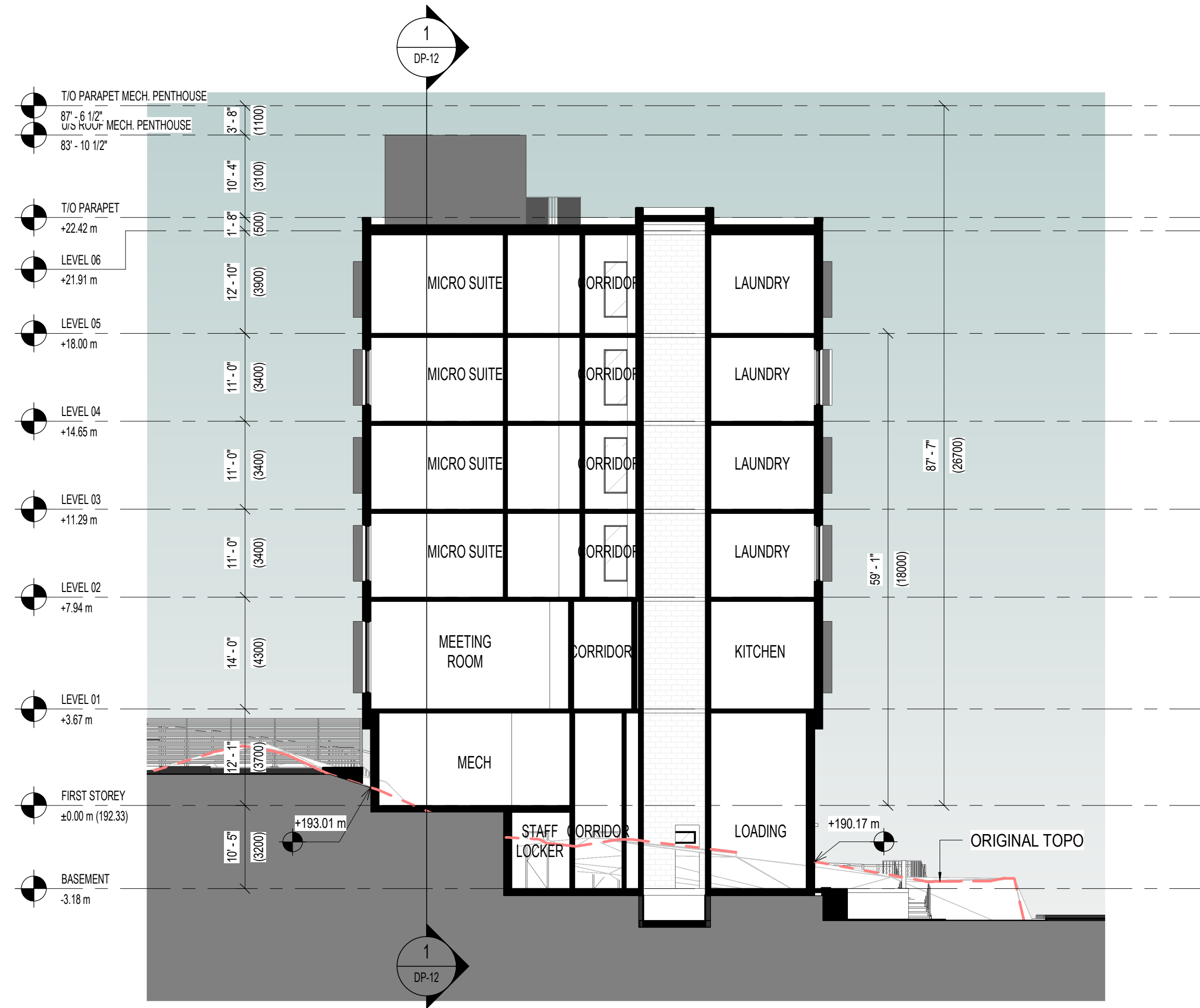
1 N-S LONG SECTION  
DP-12 1:150



3 E-W SECTION THROUGH NORTH EXIT STAIR  
DP-12 1:150



2 E-W SHORT SECTION  
DP-12 1:150



1 E-W SECTION THROUGH SERVICE ELEVATOR  
DP-13 1:150



2 E-W SECTION THROUGH MAIN ENTRANCE  
DP-13 1:150



3 E-W SECTION THROUGH SOUTH EXIT STAIR  
DP-13 1:150



4 E-W SECTION THROUGH REPAIR & MAINT. STR  
DP-13 1:150