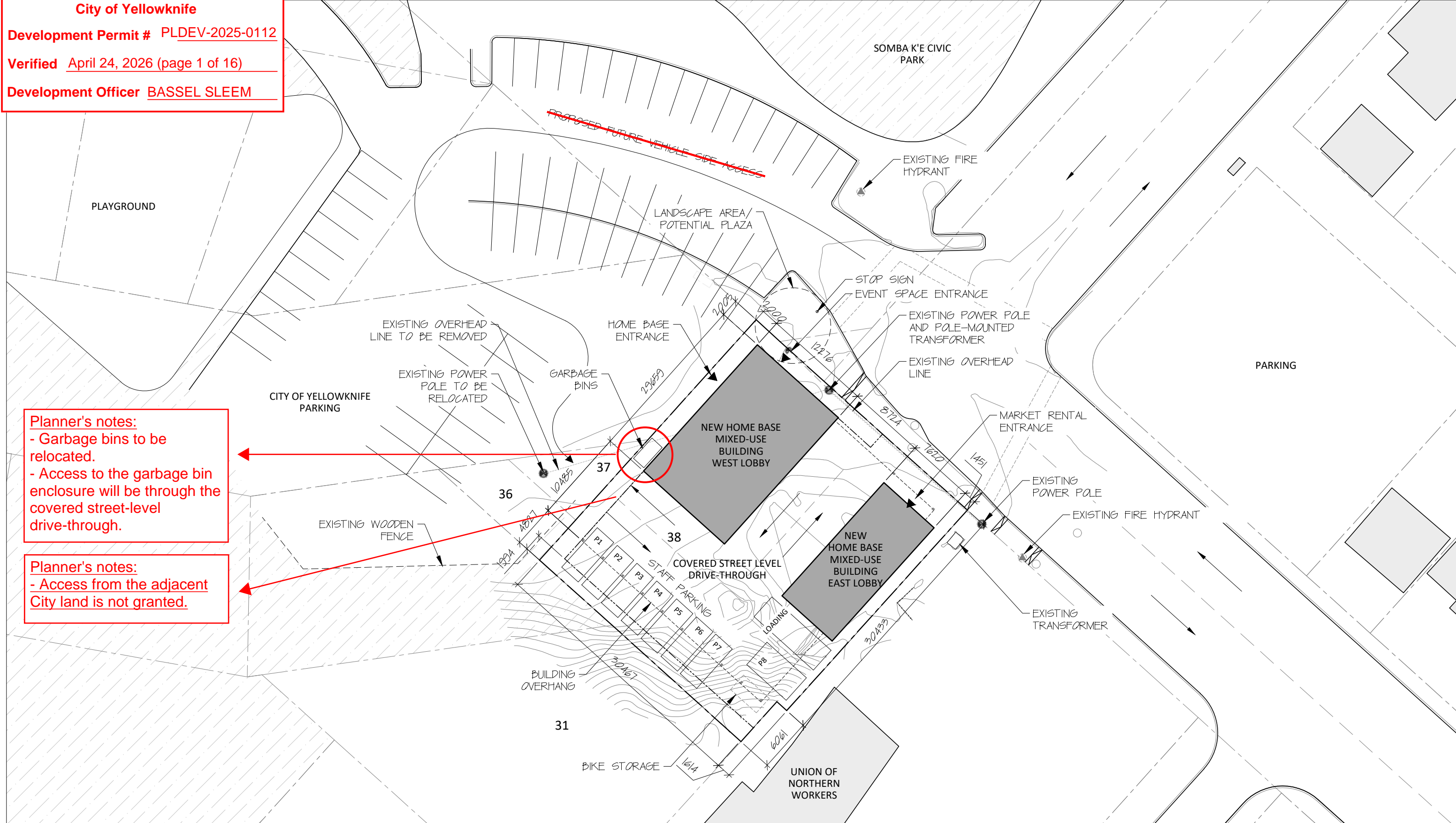


**City of Yellowknife**  
**Development Permit #** PLDEV-2025-0112  
**Verified** April 24, 2026 (page 1 of 16)  
**Development Officer** BASSEL SLEEM

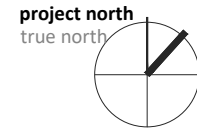


**Planner's notes:**  
 - Garbage bins to be relocated.  
 - Access to the garbage bin enclosure will be through the covered street-level drive-through.

**Planner's notes:**  
 - Access from the adjacent City land is not granted.

**SITE PLAN**

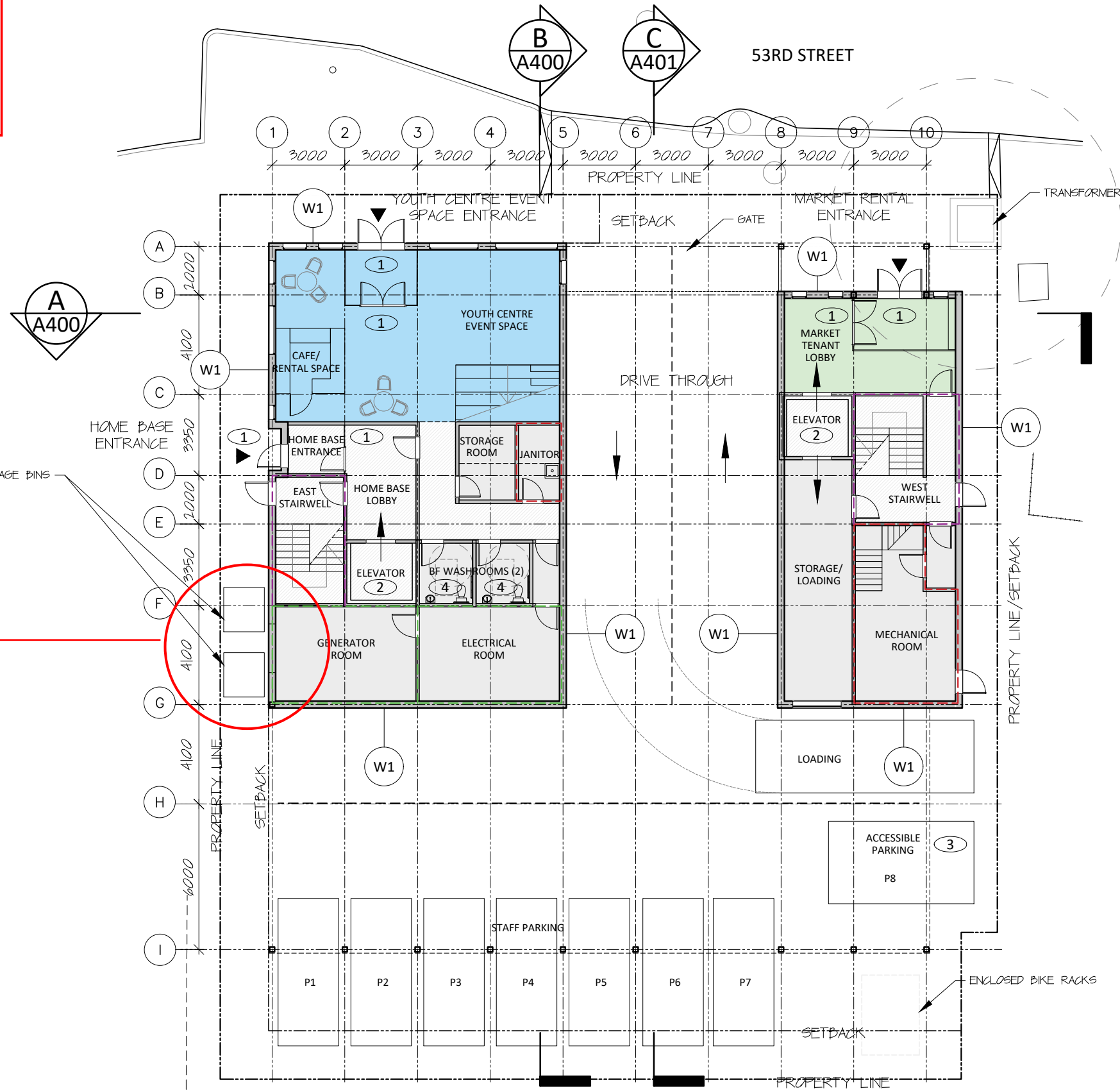
Home Base Mixed-Use Building Yellowknife, NT  
 August 19, 2024 Home Base Yellowknife  
 Schematic Design



**A100**

1:400

**City of Yellowknife**  
**Development Permit # PLDEV-2025-0112**  
**Verified April 24, 2026 (page 2 of 16)**  
**Development Officer BASSEL SLEEM**



- LEGEND:**
- ① POWER DOOR OPERATORS
  - ② ACCESSIBLE LIFT
  - ③ ACCESSIBLE ELECTRIFIED PARKING STALL
  - ④ BF WASHROOM: TOILET WITH BARRIER-FREE GRAB BARS, POWER DOOR OPERATOR, ACCESSIBLE LAVATORY
  - 45-MIN FIRE RATING
  - 1-HOUR FIRE RATING
  - 2-HOUR FIRE RATING
  - HOME BASE
  - MARKET RENTAL
  - SERVICE
  - CIRCULATION

**Planner's notes:**

- Garbage bins to be relocated.
- Access to the garbage bin enclosure will be through the covered street-level drive-through.
- Access from the adjacent City land is not granted.

**FLOOR 1**

Home Base Mixed-Use Building      Yellowknife, NT  
 August 19, 2024      Home Base Yellowknife  
 Schematic Design

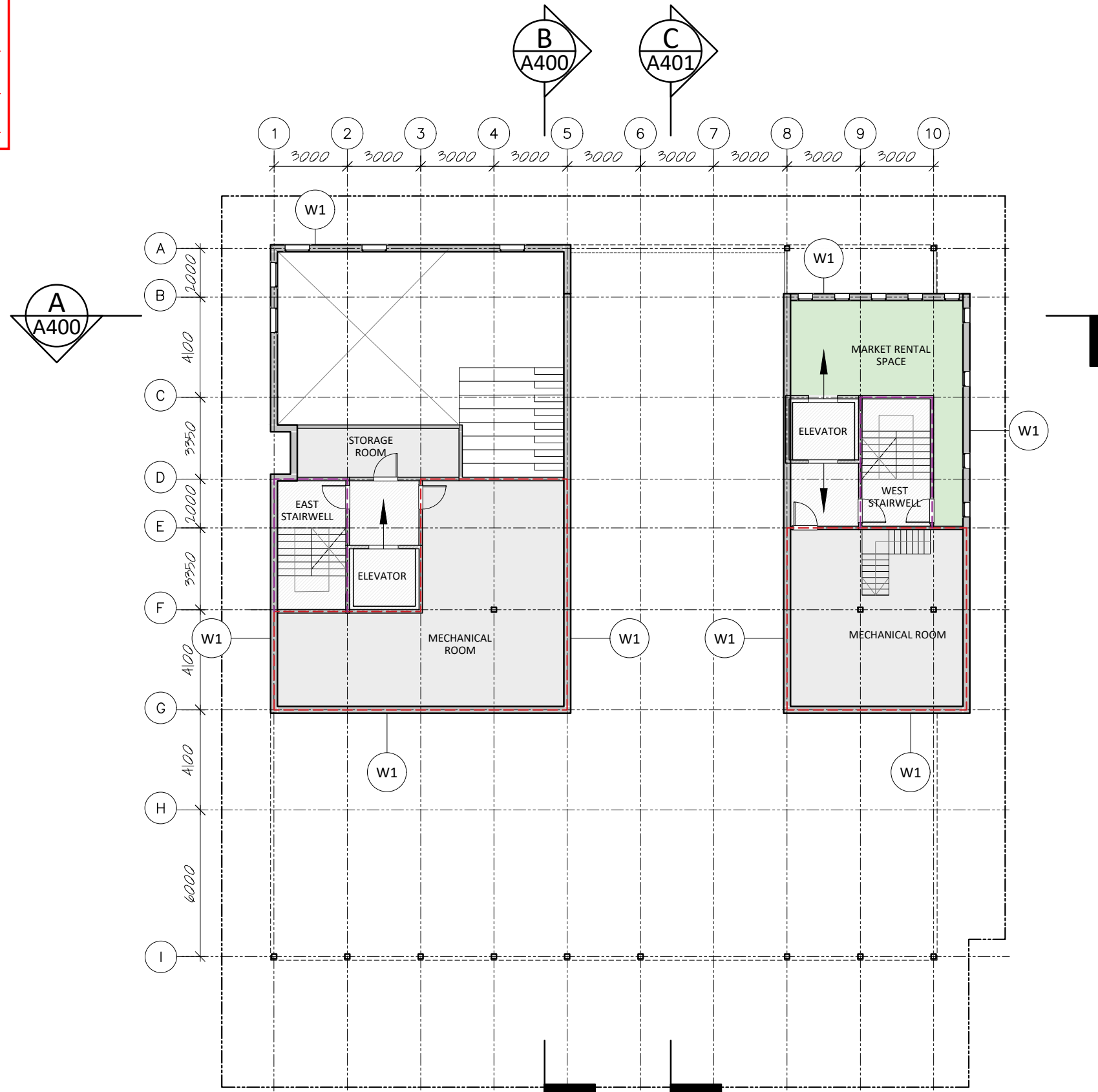


**A101**

1:200

City of Yellowknife  
 Development Permit # PLDEV-2025-0112  
 Verified April 24, 2026 (page 3 of 16)  
 Development Officer BASSEL SLEEM

- LEGEND:
- 45-MIN FIRE RATING
  - 1-HOUR FIRE RATING
  - MARKET RENTAL
  - SERVICE SPACE
  - CIRCULATION



**FLOOR 2**

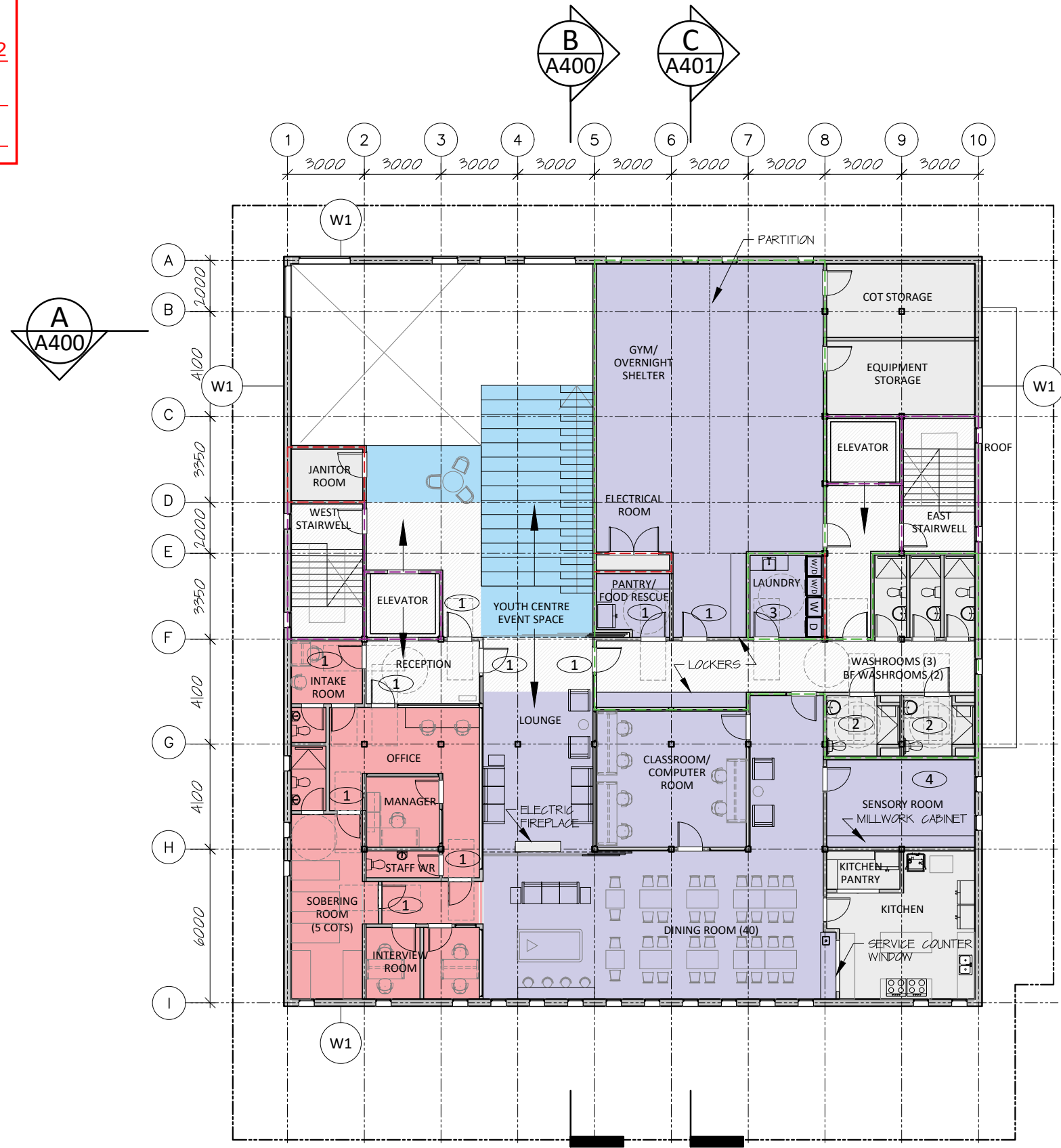
Home Base Mixed-Use Building Yellowknife, NT  
 August 19, 2024 Home Base Yellowknife  
 Schematic Design



**A102**

1:200

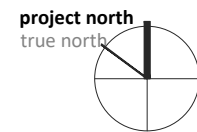
City of Yellowknife  
 Development Permit # PLDEV-2025-0112  
 Verified April 24, 2026 (page 4 of 16)  
 Development Officer BASSEL SLEEM



- LEGEND:**
- ① POWER DOOR OPERATORS
  - ② BF WASHROOM: TOILET WITH BARRIER-FREE GRAB BARS, POWER DOOR OPERATOR, ACCESSIBLE LAVATORY
  - ③ ACCESSIBLE LAUNDRY: POWER DOOR OPERATOR, ACCESSIBLE COUNTER WITH SINK, (1) ACCESSIBLE FRONT-LOADING WASHER, (1) ACCESSIBLE FRONT-LOADING DRYER
  - ④ MULTI-SENSORY ROOM
  - 45-MIN FIRE RATING
  - 1-HOUR FIRE RATING
  - 2-HOUR FIRE RATING
  - YOUTH CENTRE EVENT SPACE
  - YOUTH CENTRE/SHELTER
  - YOUTH CENTRE OFFICE
  - SERVICE
  - CIRCULATION

**FLOOR 3**

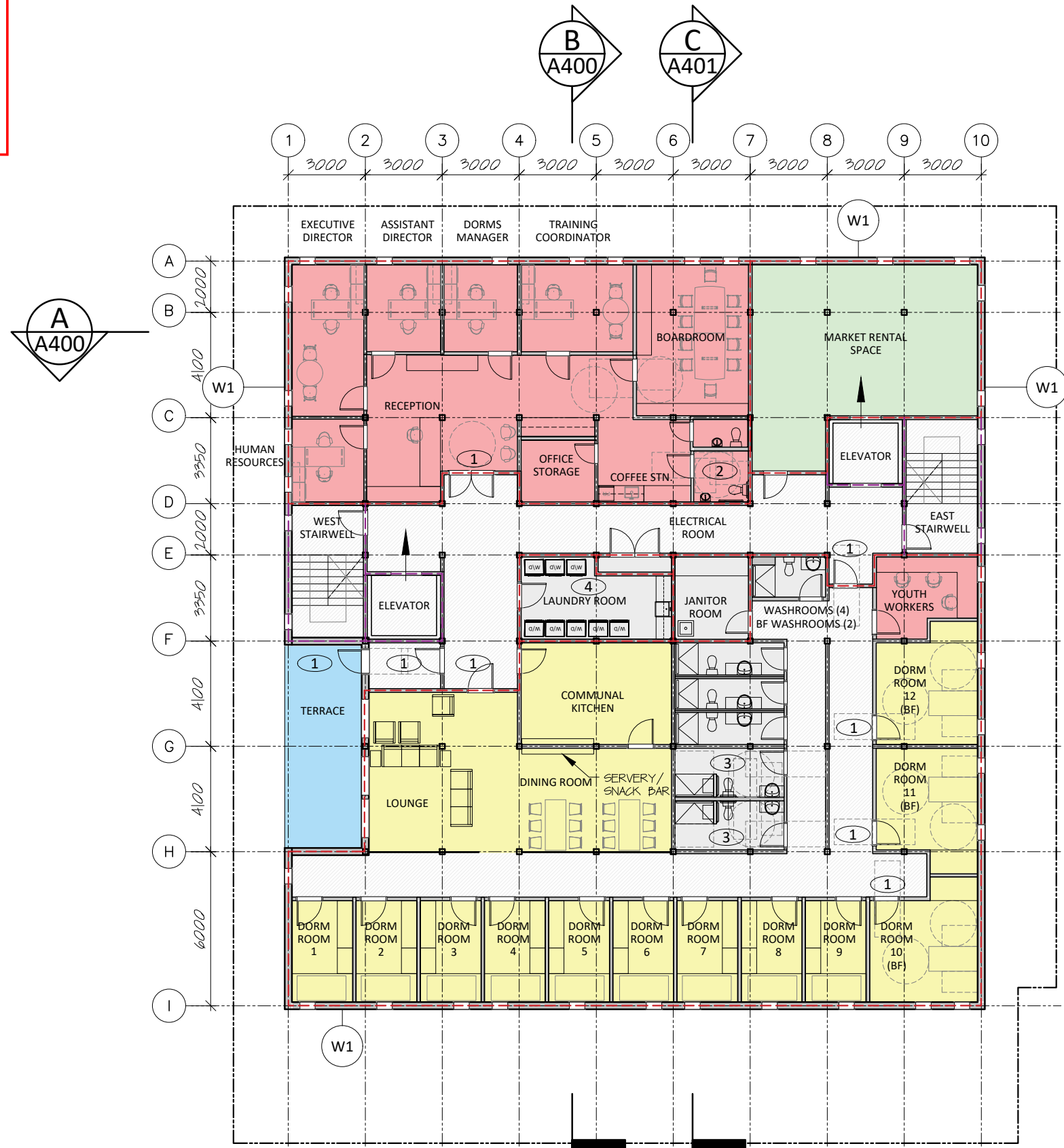
Home Base Mixed-Use Building Yellowknife, NT  
 August 19, 2024 Home Base Yellowknife  
 Schematic Design



**A103**

1:200

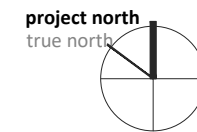
City of Yellowknife  
 Development Permit # PLDEV-2025-0112  
 Verified April 24, 2026 (page 5 of 16)  
 Development Officer BASSEL SLEEM



- LEGEND:**
- 1 POWER DOOR OPERATORS
  - 2 BF WASHROOM: TOILET WITH BARRIER-FREE GRAB BARS, POWER DOOR OPERATOR, ACCESSIBLE LAVATORY
  - 3 BF WASHROOM & SHOWER: TOILET WITH BARRIER-FREE GRAB BARS, ROLL-IN SHOWER WITH GRAB BARS, ACCESSIBLE SHOWER FIXTURES, BARRIER-FREE SHOWER SEAT, POWER DOOR OPERATOR, ACCESSIBLE LAVATORY
  - 4 ACCESSIBLE LAUNDRY: POWER DOOR OPERATOR, ACCESSIBLE COUNTER WITH SINK, (1) ACCESSIBLE FRONT-LOADING WASHER, (1) ACCESSIBLE FRONT-LOADING DRYER
  - 45-MIN FIRE RATING (purple dashed line)
  - 1-HOUR FIRE RATING (red dashed line)
  - 2-HOUR FIRE RATING (green dashed line)
  - HOME BASE OUTDOOR TERRACE (blue)
  - HOME BASE OFFICES (pink)
  - DORMITORY SPACES (yellow)
  - MARKET RENTAL (green)
  - SERVICE (grey)
  - CIRCULATION (hatched)

**FLOOR 4**

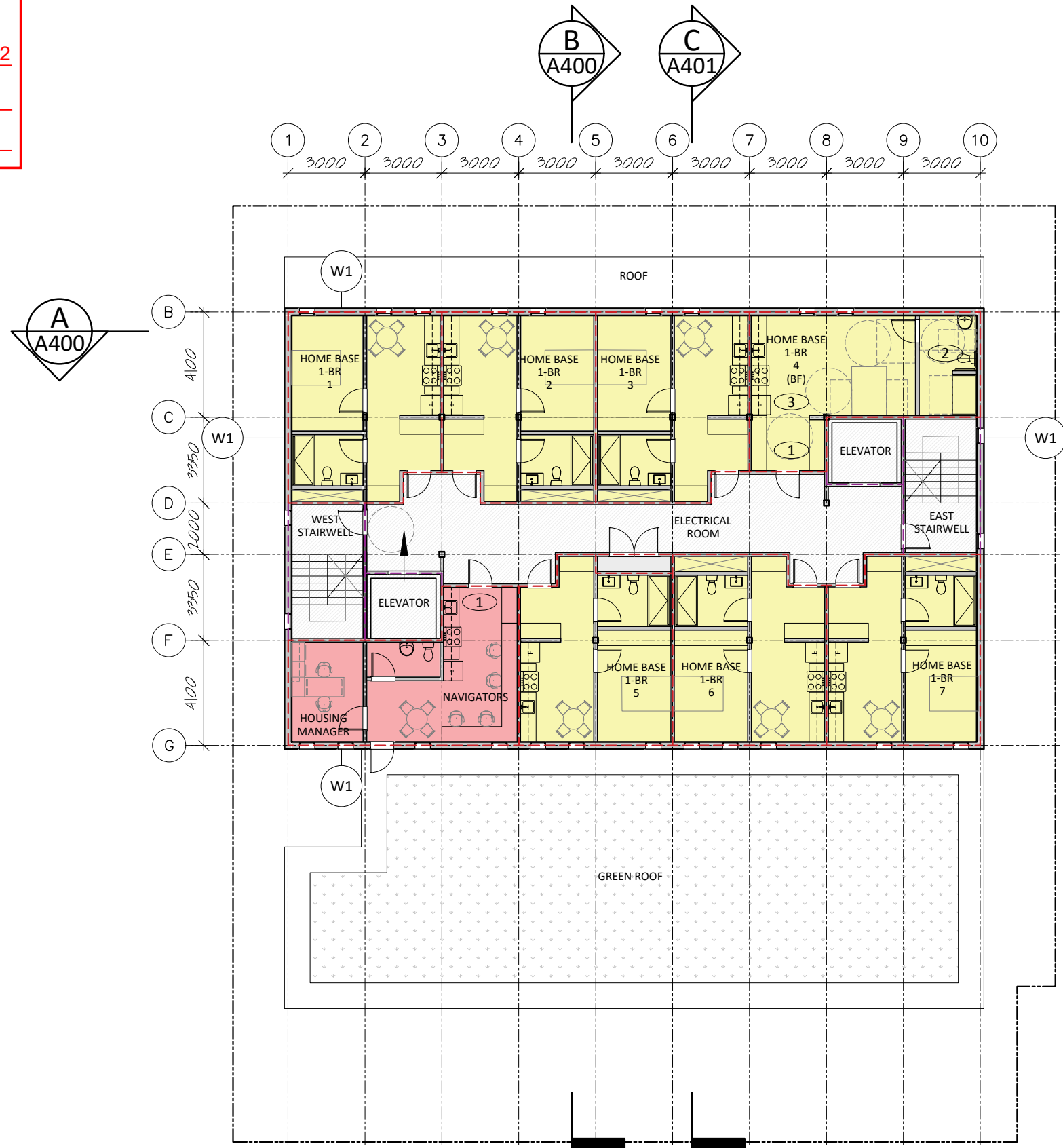
Home Base Mixed-Use Building Yellowknife, NT  
 August 19, 2024 Home Base Yellowknife  
 Schematic Design



**A104**

1:200

City of Yellowknife  
 Development Permit # PLDEV-2025-0112  
 Verified April 24, 2026 (page 6 of 16)  
 Development Officer BASSEL SLEEM

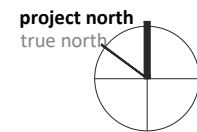


- LEGEND:**
- ① POWER DOOR OPERATORS
  - ② BF WASHROOM & SHOWER: TOILET WITH BARRIER-FREE GRAB BARS, ROLL-IN SHOWER WITH GRAB BARS, ACCESSIBLE SHOWER FIXTURES, BARRIER-FREE SHOWER SEAT, ACCESSIBLE LAVATORY
  - ③ BF KITCHEN: ACCESSIBLE COUNTERTOP, ACCESSIBLE RANGE, ACCESSIBLE UNDERMOUNT SINK
  - - - 45-MIN FIRE RATING
  - - - 1-HOUR FIRE RATING
  - HOME BASE APARTMENTS
  - HOME BASE OFFICE
  - SERVICE
  - CIRCULATION



**FLOOR 5**

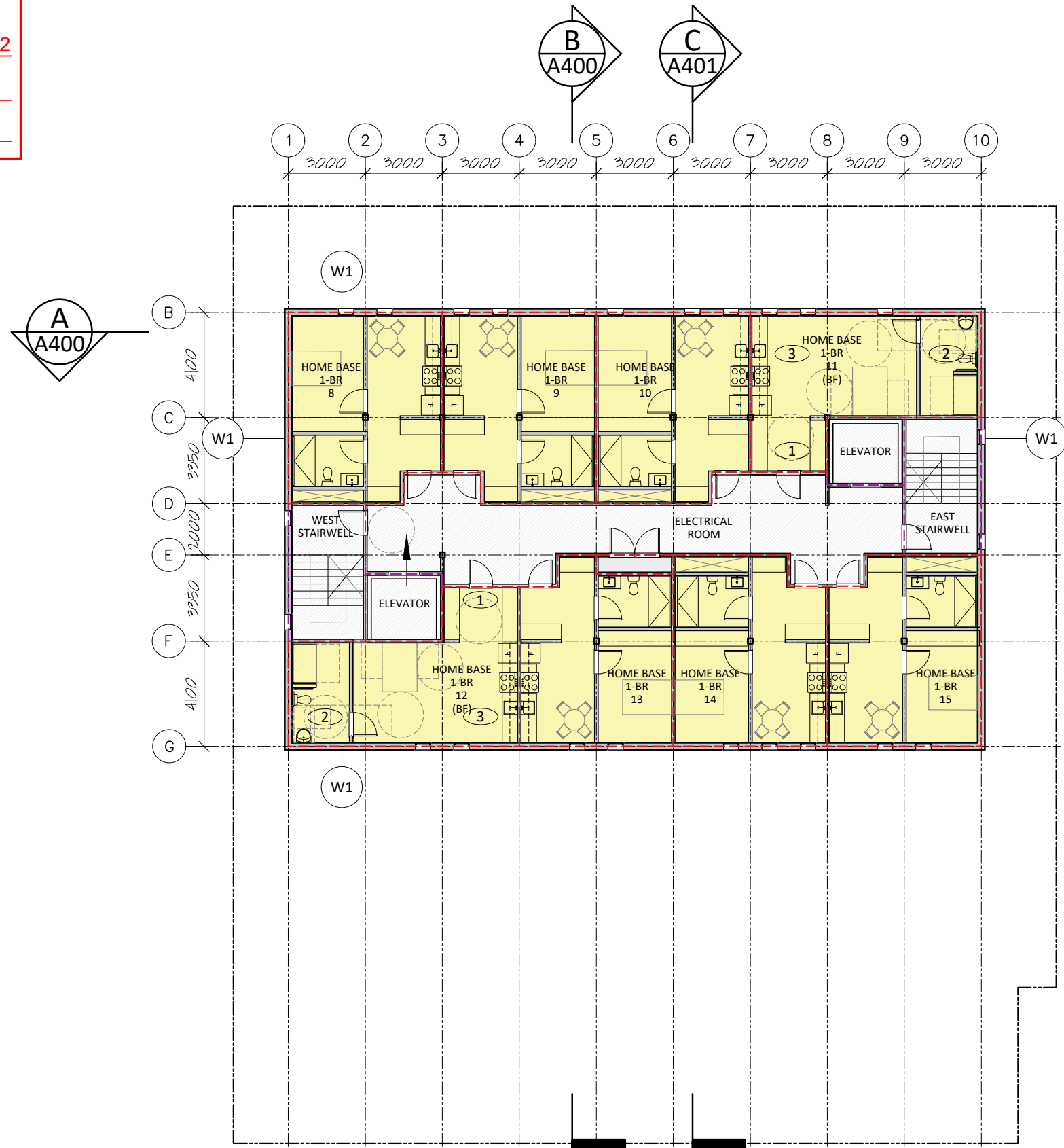
Home Base Mixed-Use Building Yellowknife, NT  
 August 19, 2024 Home Base Yellowknife  
 Schematic Design



**A105**

1:200

City of Yellowknife  
 Development Permit # PLDEV-2025-0112  
 Verified April 24, 2026 (page 7 of 16)  
 Development Officer BASSEL SLEEM

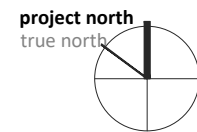


- LEGEND:**
- ① POWER DOOR OPERATORS
  - ② BF WASHROOM & SHOWER: TOILET WITH BARRIER-FREE GRAB BARS, ROLL-IN SHOWER WITH GRAB BARS, ACCESSIBLE SHOWER FIXTURES, BARRIER-FREE SHOWER SEAT, ACCESSIBLE LAVATORY,
  - ③ BF KITCHEN: ACCESSIBLE COUNTERTOP, ACCESSIBLE RANGE, ACCESSIBLE UNDERMOUNT SINK
  - 45-MIN FIRE RATING
  - 1-HOUR FIRE RATING
  - HOME BASE APARTMENTS
  - SERVICE
  - CIRCULATION



**FLOOR 6**

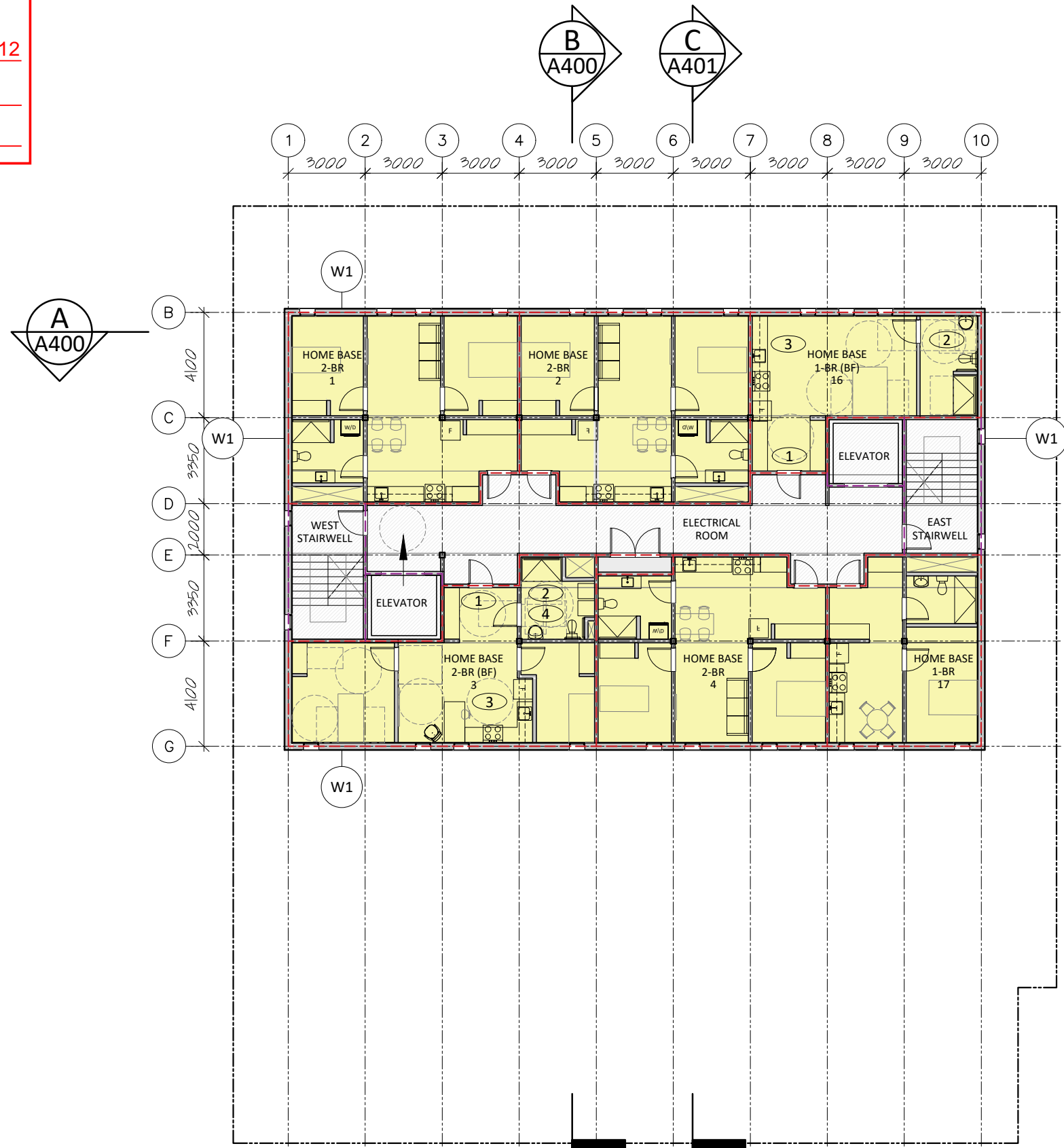
Home Base Mixed-Use Building Yellowknife, NT  
 August 19, 2024 Home Base Yellowknife  
 Schematic Design



**A106**

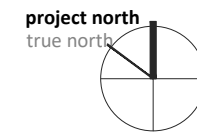
1:200

City of Yellowknife  
 Development Permit # PLDEV-2025-0112  
 Verified April 24, 2026 (page 8 of 16)  
 Development Officer BASSEL SLEEM



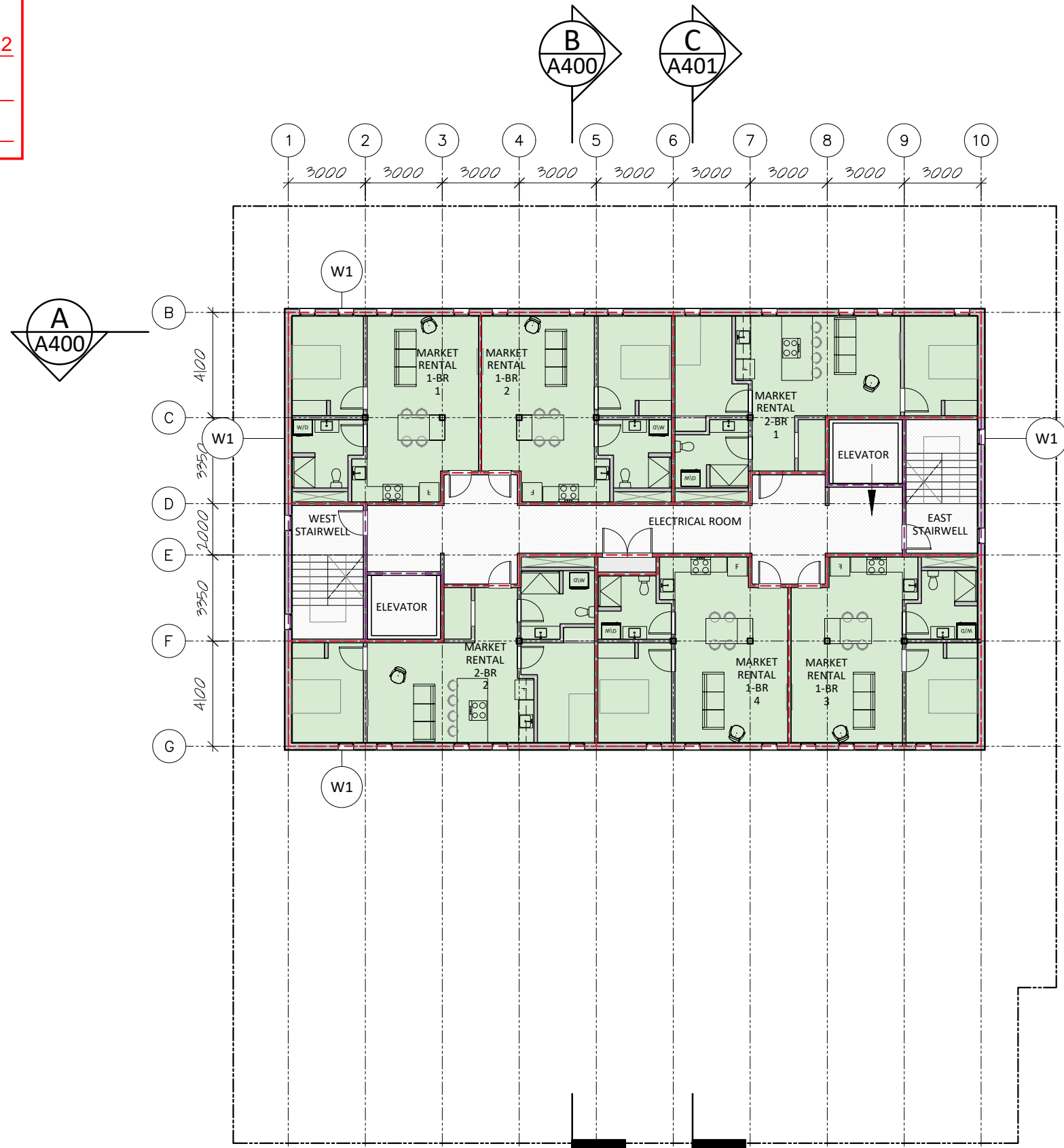
- LEGEND:**
- ① POWER DOOR OPERATORS
  - ② BF WASHROOM & SHOWER: TOILET WITH BARRIER-FREE GRAB BARS, ROLL-IN SHOWER WITH GRAB BARS, ACCESSIBLE SHOWER FIXTURES, BARRIER-FREE SHOWER SEAT, ACCESSIBLE LAVATORY, ACCESSIBLE FRONT-LOADING WASHER, ACCESSIBLE FRONT-LOADING DRYER
  - ③ BF KITCHEN: ACCESSIBLE COUNTERTOP, ACCESSIBLE RANGE, ACCESSIBLE UNDERMOUNT SINK
  - ④ ACCESSIBLE FRONT-LOADING WASHER, ACCESSIBLE FRONT-LOADING DRYER
  - - - 45-MIN FIRE RATING
  - - - 1-HOUR FIRE RATING
  - HOME BASE APARTMENTS
  - SERVICE
  - CIRCULATION

**FLOOR 7**



City of Yellowknife  
 Development Permit # PLDEV-2025-0112  
 Verified April 24, 2026 (page 9 of 16)  
 Development Officer BASSEL SLEEM

- LEGEND:
- 45-MIN FIRE RATING
  - 1-HOUR FIRE RATING
  - MARKET RENTAL APARTMENTS
  - SERVICE
  - CIRCULATION



**FLOOR 8**

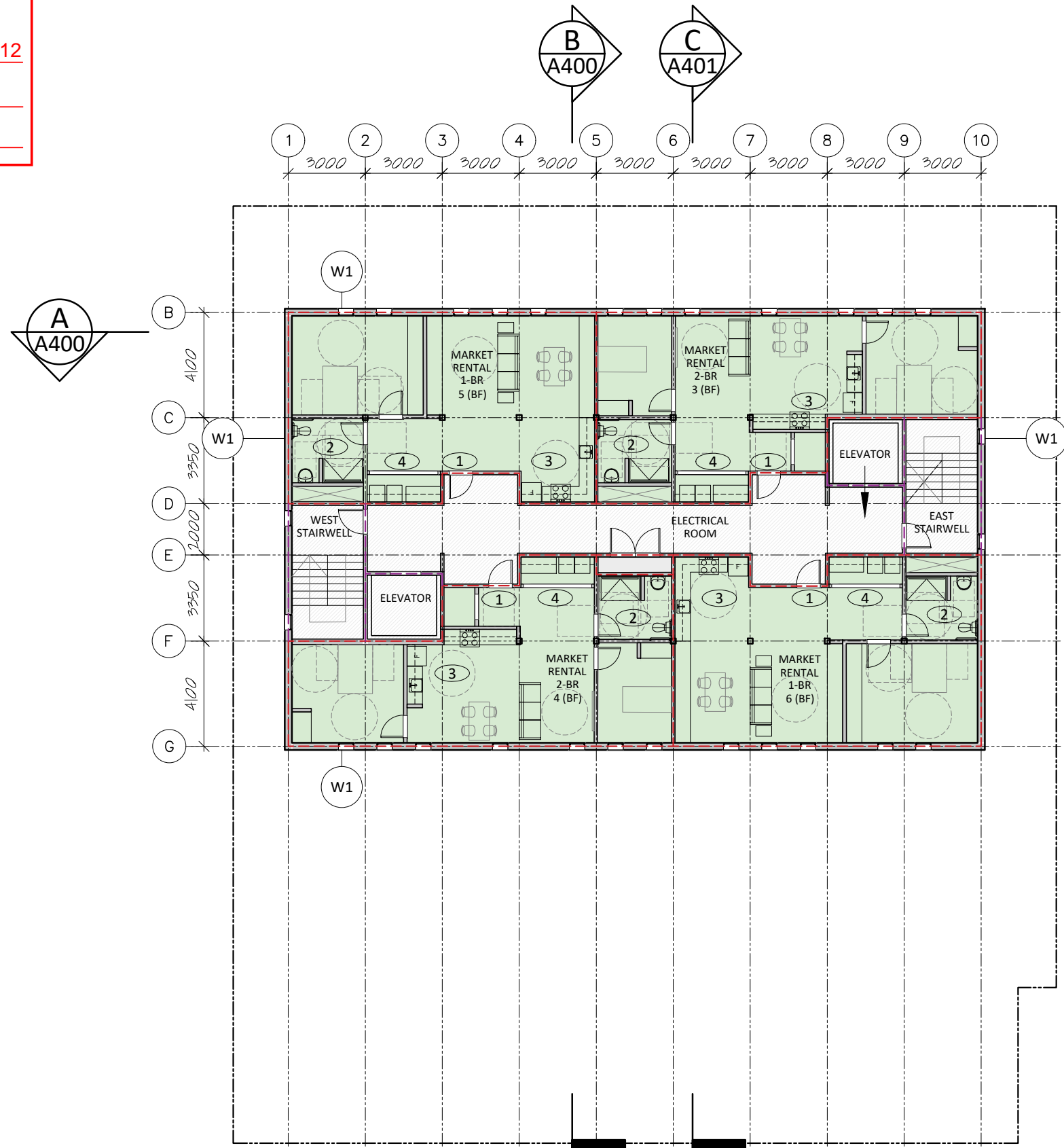
Home Base Mixed-Use Building Yellowknife, NT  
 August 19, 2024 Home Base Yellowknife  
 Schematic Design



**A108**

1:200

City of Yellowknife  
 Development Permit # PLDEV-2025-0112  
 Verified April 24, 2026 (page 10 of 16)  
 Development Officer BASSEL SLEEM



- LEGEND:**
- 1 POWER DOOR OPERATORS
  - 2 BF WASHROOM & SHOWER: TOILET WITH BARRIER-FREE GRAB BARS, ROLL-IN SHOWER WITH GRAB BARS, ACCESSIBLE SHOWER FIXTURES, BARRIER-FREE SHOWER SEAT, ACCESSIBLE LAVATORY
  - 3 BF KITCHEN: ACCESSIBLE COUNTERTOP, ACCESSIBLE RANGE, ACCESSIBLE UNDERMOUNT SINK
  - 4 ACCESSIBLE FRONT-LOADING WASHER, ACCESSIBLE FRONT-LOADING DRYER
  - 45-MIN FIRE RATING
  - - - 1-HOUR FIRE RATING
  - MARKET RENTAL APARTMENTS
  - SERVICE
  - ▨ CIRCULATION



**FLOOR 9**

Home Base Mixed-Use Building Yellowknife, NT  
 August 19, 2024 Home Base Yellowknife  
 Schematic Design

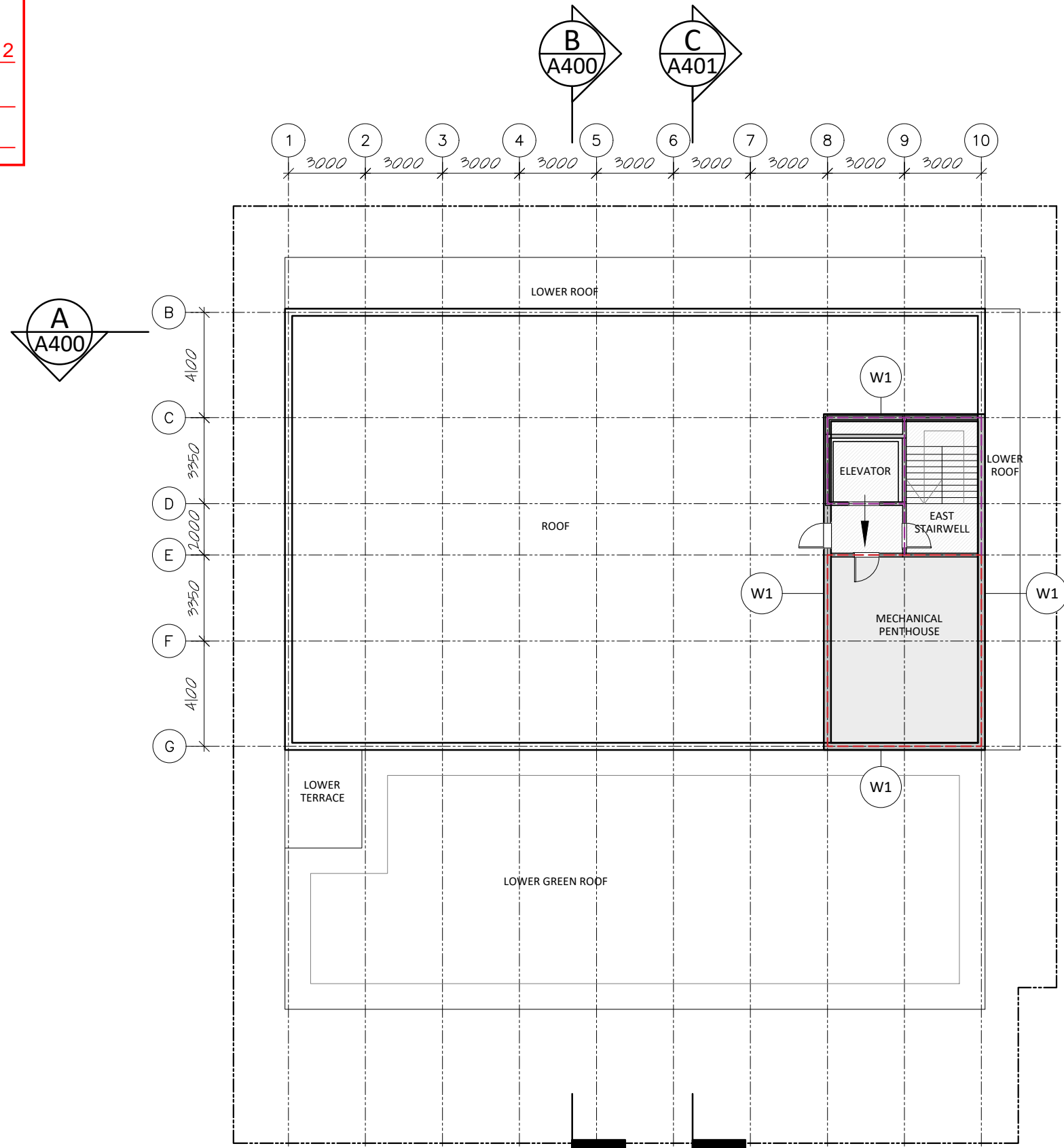


**A109**

1:200

City of Yellowknife  
 Development Permit # PLDEV-2025-0112  
 Verified April 24, 2026 (page 11 of 16)  
 Development Officer BASSEL SLEEM

LEGEND:  
 - - - 45-MIN FIRE RATING  
 - - - 1-HOUR FIRE RATING  
 □ SERVICE  
 ▨ CIRCULATION



**ROOF**

Home Base Mixed-Use Building Yellowknife, NT  
 August 19, 2024 Home Base Yellowknife  
 Schematic Design

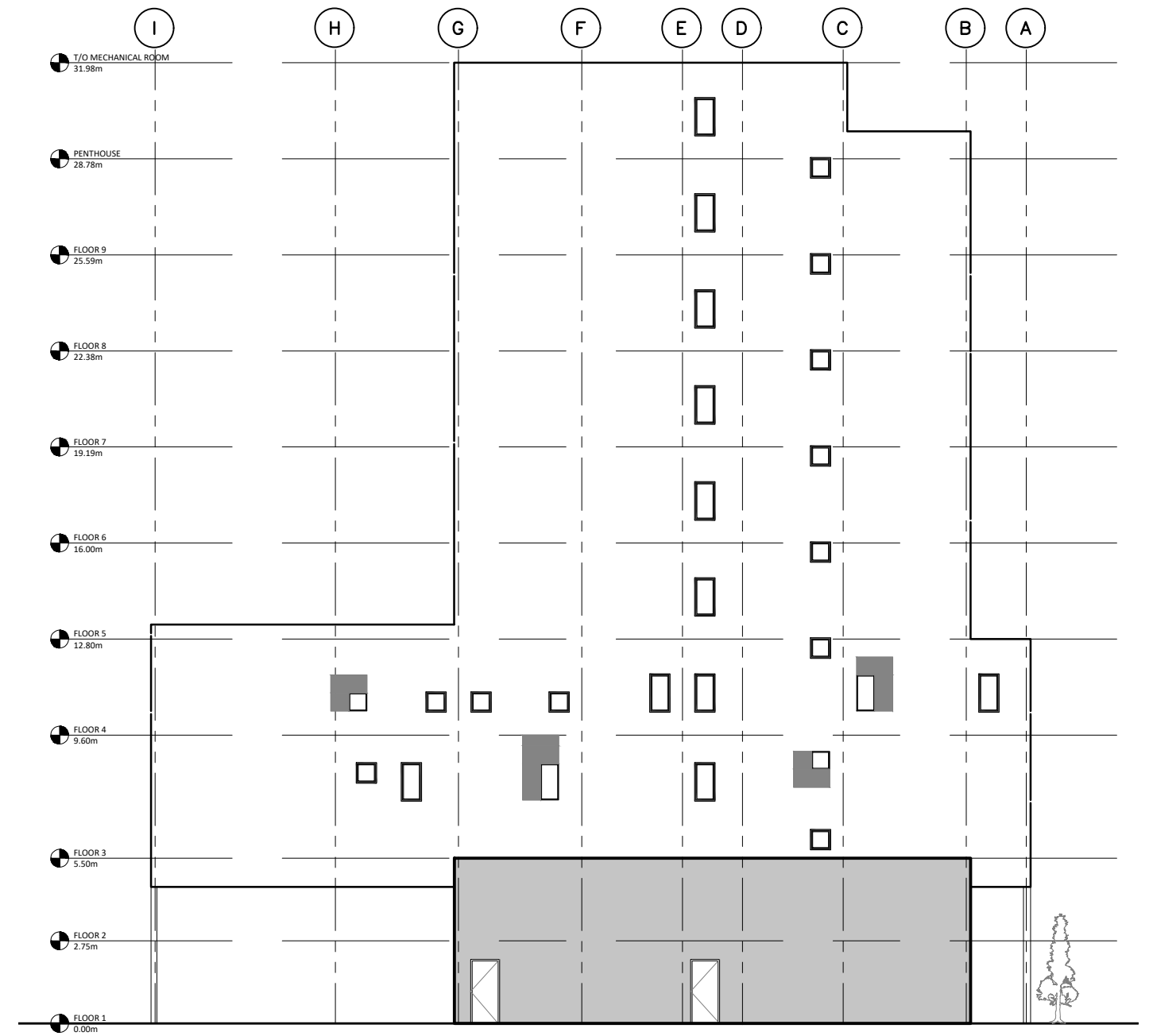


**A110**

1:200

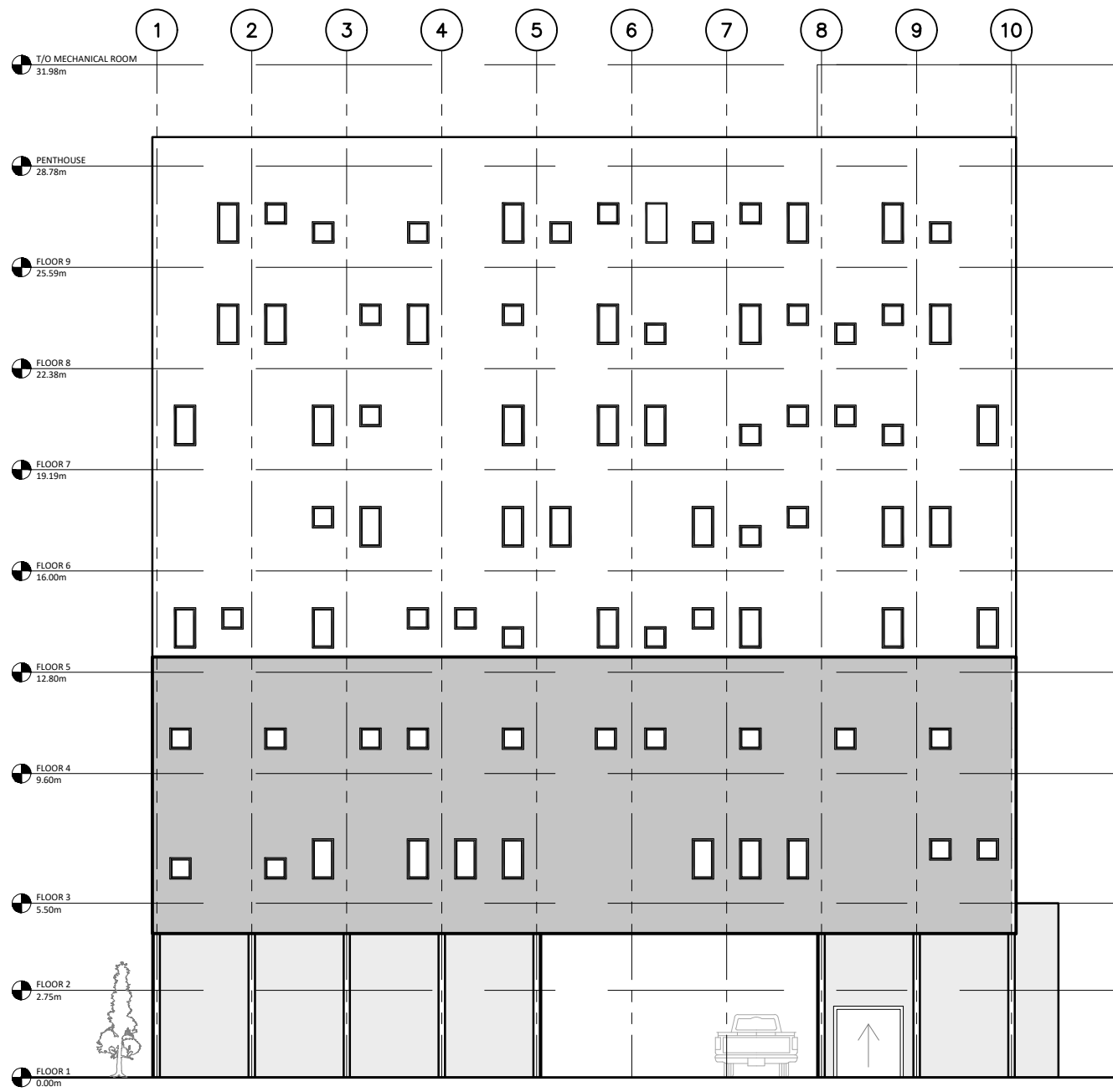


**1 NORTH ELEVATION**  
A200 scale 1:200

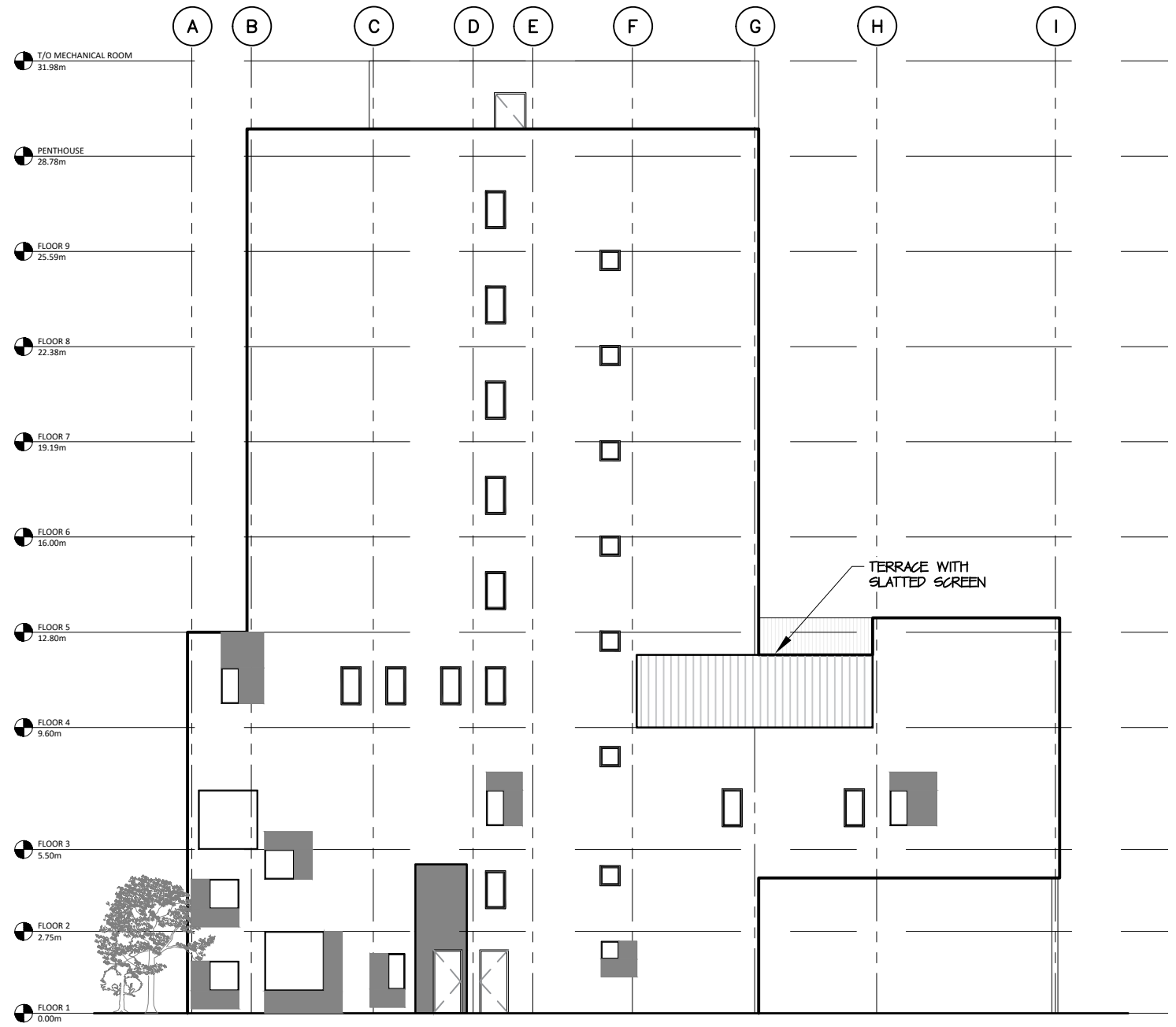


**2 EAST ELEVATION**  
A200 scale 1:200

**ELEVATIONS**



**1 SOUTH ELEVATION**  
A201 scale 1:200



**2 WEST ELEVATION**  
A201 scale 1:200

**ELEVATIONS**



**RENDERED PERSPECTIVE**

Home Base Mixed-Use Building Yellowknife, NT  
August 2024  
Schematic Design

**City of Yellowknife**

**Development Permit #** PLDEV-2025-0112

**Verified** April 24, 2026 (page 14 of 16)

**Development Officer** BASSEL SLEEM

**A1000**

NTS



**RENDERED PERSPECTIVE**

Home Base Mixed-Use Building Yellowknife, NT  
August 2024  
Schematic Design

City of Yellowknife  
Development Permit # PLDEV-2025-0112  
Verified April 24, 2026 (page 15 of 16)  
Development Officer BASSEL SLEEM



**RENDERED PERSPECTIVE**

Home Base Mixed-Use Building Yellowknife, NT  
August 2024  
Schematic Design

City of Yellowknife  
Development Permit # PLDEV-2025-0112  
Verified April 24, 2026 (page 16 of 16)  
Development Officer BASSEL SLEEM