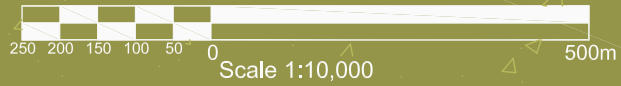




# 2015 Vision

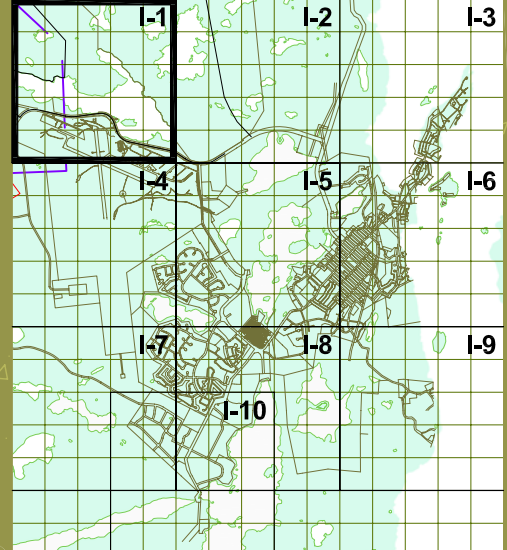


City of Yellowknife  
 Integrated Parks, Trails and  
 Open Space Development Study **Map B I-1**  
 September 2005



## Legend:

- PR Parks and Recreational Areas
- NP Natural Preservation/Greenspace
- Walking Trails
- Ski Trails
- Dog Sled Derby Trail
- Snowmobile Route
- Snowmobile Off Limits
- GM Growth Management
- Capital Area
- Municipal Boundary
- Seismic Reserve
- Proposed Trail System
- Proposed Trail System (subject to change upon review)



- e Ecological Importance (see Map E)
- A Day Use/Picnic Area
- W Waterfront Park
- C Cemetary
- D Off Leash Dog Area
- P Pedestrian Crossing
- V View Point
- W Wildlife Viewing
- H Heritage Site
- M Mining Heritage Site

### PR Public Parks and Recreation

- 100 Latham Island Park (N-13)
- 101 Bush Pilots Memorial Park (N-12)
- 102 Jolliffe Island (O-12)
- 103 Schoold Draw Rotary Park (M-10)
- 104 School Draw Park (M-9)
- 105 Public Park (M-8)
- 106 Olexin Park (L-8)
- 107 Forrest Drive Park (K-8,L-7)
- 108 Public Park (L-8)
- 109 Public Park (K-8)
- 110 Public Park (K-9)
- 111 Samba'ke Park (K-9)
- 112 McNiven Beach (J-8)
- 113 Past Gerry Murphy Arena Site (K-9)
- 114 Public Park (G-6)
- 115 Frame Lake South Tennis Courts (I-7)
- 116 Bristol Memorial Park (G-12, H-12)
- 117 Public Park (G-6)
- 118 Public Park (G-6)
- 119 Ruth Inch Memorial Pool (J-8)
- 120 Public Library (L-9)
- 121 Tennis Courts (J-8)
- 122 Parker Recreational Field (F-7)

### Institutional Facilities

- 123 Yellowknife Community Arena (J-8)
- 124 Public Park (F-8, G-8)
- 125 Doombos Park (L-10)
- 126 St. Joseph's Playing Field (H-7)
- 127 Lakeview Cemetery (H-11, H-12)
- 128 Public Park (O-13)
- 129 Public Park (O-13)
- 130 Fritz Thell Memorial Park (M-11)
- 131 Tommy Forrest Ball Park (K-8)
- 132 Yellowknife Ski Club (L-14)
- 133 Soccer and Ball Field at William McDonald Junior High (J-7)
- 134 Playing Field at Sir John Franklin High School (M-9)
- 135 Playing Field at Mildred Hall Elementary School (K-9)
- 136 Playing Field at Range Lake North School (G-9)
- 137 Jeske Park (G-9)
- 138 Yellowknife Golf Club (not shown)
- 139 Yellowknife Curling Club (J-8)
- 140 Yellowknife Multiplex (I-7)
- 141 Outdoor Ice Rink (K-10)

### Waterfront

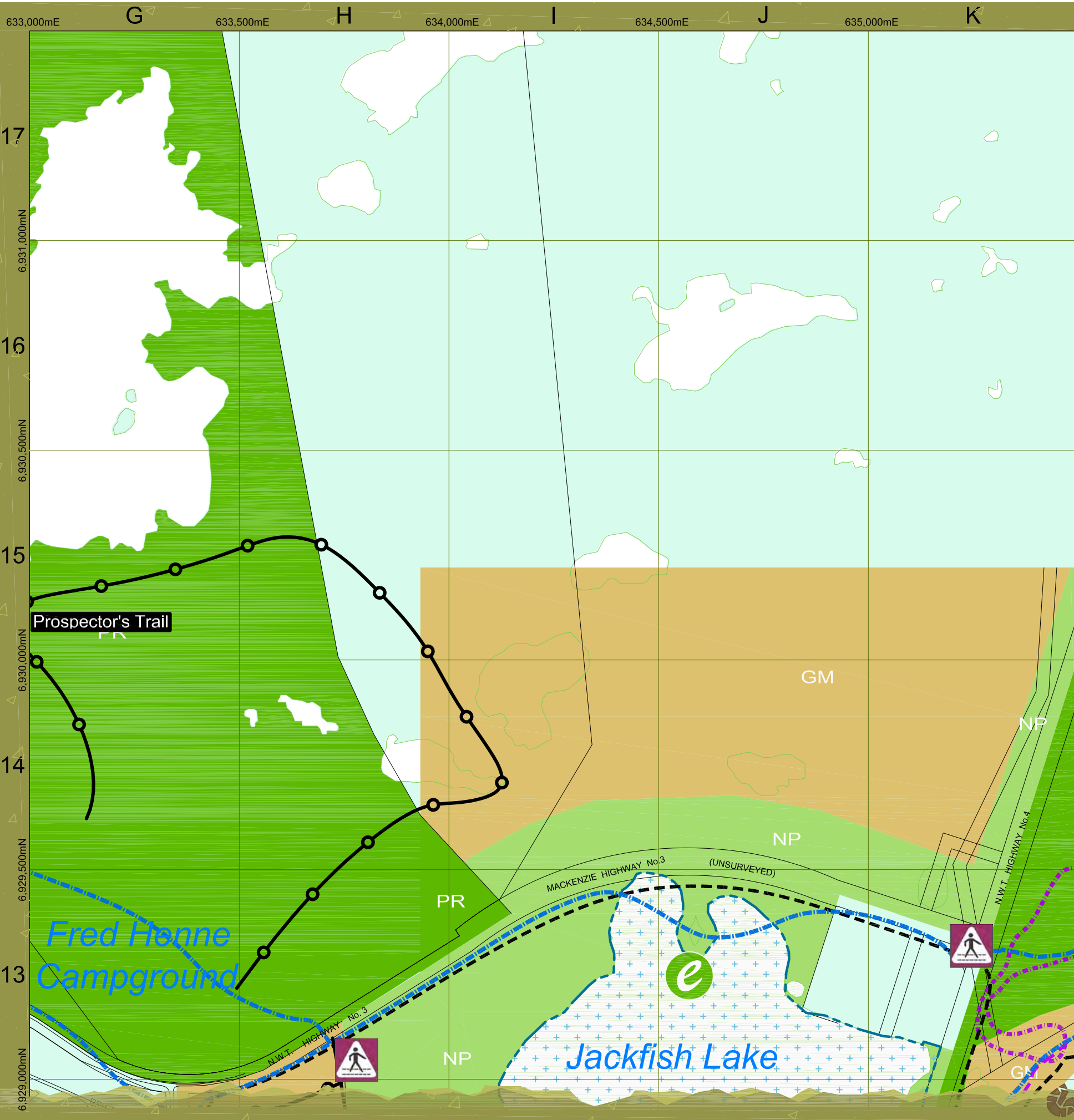
- 200 Solid Waste Facility (K-14)
- 201 Municipal Boat Launch (N-12)
- 202 St. Patrick High School (L-10, M-10)
- 203 Weledeh School (L-10, M-10)
- 204 Sir John Franklin High School (M-9)
- 205 Aurora College (K-9)
- 206 JH Sissons School (K-8)
- 207 Allain St. Cyr School (J-7)
- 208 William McDonald School (J-7)
- 209 Yellowknife Fire Department (I-7)
- 210 NJ Macpherson School (G-6)
- 211 St. Joseph School (H-7)
- 212 Range Lake North School (G-9)
- 213 Lakeview Cemetery (H-11)
- 214 Hospital (H-8)
- 215 Mildred Hall School (K-9)
- 216 City Hall (K-10)
- 217 RCMP (K-10)
- 218 DND (K-10)
- 219 Court House (L-10)
- 220 Visitor's Centre (K-10)
- 221 Museum (K-10)
- 222 Legeslative Assembly (J-11)

### Waterfront

- 300 Giant Mine Waterfront (M-17)
- 301 Waterfront Trail System
- 302 Waterfront Park (M-15)
- 303 Waterfront Viewpoint
- 304 Jackfish Ravine (L-13)
- 305 Back Bay Cemetery (L-13)
- 306 Waterfront Park (N-13)
- 307 Two Point Mooring Area (N-14)
- 308 Waterfront Park (O-13)
- 309 Community Docks (O-13)
- 310 Waterfront Park/Viewpoint (O-13)
- 311 Viewpoint (N-12)
- 312 Viewpoint (N-12)
- 313 Franklin Aves Walkway (N-12)
- 314 Day Use/Picnic Area (O-12)
- 315 Waterfront Park/Viewpoint (O-12)
- 316 Jolliffe Island Park (O-11)
- 317 Floating Home Mooring (N-11, N10)
- 318 Viewpoint (N-11)
- 319 Woodyard Heritage Waterfront Park (N-11)
- 320 Dettah Ice Road Access (M-10)
- 321 Viewpoint (N-10)
- 322 Community Docks (N-9)
- 323 Viewpoint (N-8)
- 324 Waterfront Trail System
- 325 Waterfront Park/Day Use (O-7)
- 326 Milsam Boat Launch (N-7)
- 327 Fuel Barge Docking Facility (N-6)

This map is for DISCUSSION purposes only. Information provided is based on the best material at the time of production. Locations and features are approximate.





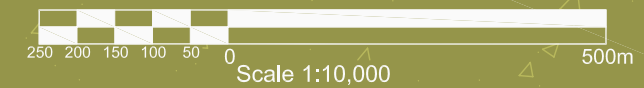
# 2015 Vision



City of Yellowknife

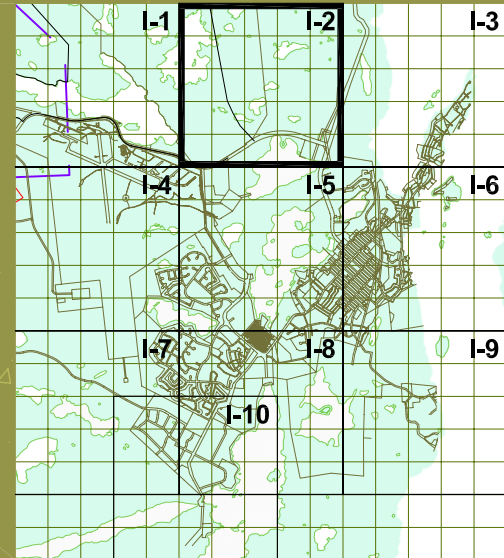
Integrated Parks, Trails and  
Open Space Development Study

Map B I-2  
September 2005



## Legend:

- PR Parks and Recreational Areas
- NP Natural Preservation/Greenspace
- Walking Trails
- Ski Trails
- Dog Sled Derby Trail
- Snowmobile Route
- Snowmobile Off Limits
- GM Growth Management
- Capital Area
- Municipal Boundary
- Seismic Reserve
- Proposed Trail System
- Proposed Trail System (subject to change upon review)



- e Ecological Importance (see Map E)
- A Day Use/Picnic Area
- W Waterfront Park
- C Cemetary
- D Off Leash Dog Area
- P Pedestrian Crossing
- V View Point
- W Wildlife Viewing
- H Heritage Site
- M Mining Heritage Site

### PR Public Parks and Recreation

- 100 Latham Island Park (N-13)
- 101 Bush Pilots Memorial Park (N-12)
- 102 Jolliffe Island (O-12)
- 103 School Draw Rotary Park (M-10)
- 104 School Draw Park (M-9)
- 105 Public Park (M-9)
- 106 Olexin Park (L-8)
- 107 Forrest Drive Park (K-8, L-7)
- 108 Public Park (L-8)
- 109 Public Park (K-8)
- 110 Public Park (K-9)
- 111 Samba'ke Park (K-9)
- 112 McNiven Beach (J-8)
- 113 Past Gerry Murphy Arena Site (K-9)
- 114 Public Park (G-6)
- 115 Frame Lake South Tennis Courts (I-7)
- 116 Bristol Memorial Park (G-12, H-12)
- 117 Public Park (G-6)
- 118 Public Park (G-6)
- 119 Ruth Inch Memorial Pool (J-8)
- 120 Public Library (L-9)
- 121 Tennis Courts (J-8)
- 122 Parker Recreational Field (F-7)

- 123 Yellowknife Community Arena (J-8)
- 124 Public Park (F-8, G-8)
- 125 Doombos Park (L-10)
- 126 St. Joseph's Playing Field (H-7)
- 127 Lakeview Cemetery (H-11, H-12)
- 128 Public Park (O-13)
- 129 Public Park (O-13)
- 130 Fritz Theil Memorial Park (M-11)
- 131 Tommy Forrest Ball Park (K-8)
- 132 Yellowknife Ski Club (L-14)
- 133 Soccer and Ball Field at William McDonald Junior High (J-7)
- 134 Playing Field at Sir John Franklin High School (M-9)
- 135 Playing Field at Mildred Hall Elementary School (K-9)
- 136 Playing Field at Range Lake North School (G-9)
- 137 Jeske Park (G-9)
- 138 Yellowknife Golf Club (not shown)
- 139 Yellowknife Curling Club (J-8)
- 140 Yellowknife Multiplex (I-7)
- 141 Outdoor Ice Rink (K-10)

### Institutional Facilities

- 200 Solid Waste Facility (K-14)
- 201 Municipal Boat Launch (N-12)
- 202 St. Patrick High School (L-10, M-10)
- 203 Weledah School (L-10, M-10)
- 204 Sir John Franklin High School (M-9)
- 205 Aurora College (K-8)
- 206 JH Sissons School (K-8)
- 207 Allan St. Cyr School (J-7)
- 208 William McDonald School (J-7)
- 209 Yellowknife Fire Department (I-7)
- 210 NJ Macpherson School (G-6)
- 211 St. Joseph School (H-7)
- 212 Range Lake North School (G-9)
- 213 Lakeview Cemetery (H-11)
- 214 Hospital (H-8)
- 215 Mildred Hall School (K-9)
- 216 City Hall (K-10)
- 217 RCMP (K-10)
- 218 DND (K-10)
- 219 Court House (L-10)
- 220 Visitor's Centre (K-10)
- 221 Museum (K-10)
- 222 Legeslative Assembly (J-11)

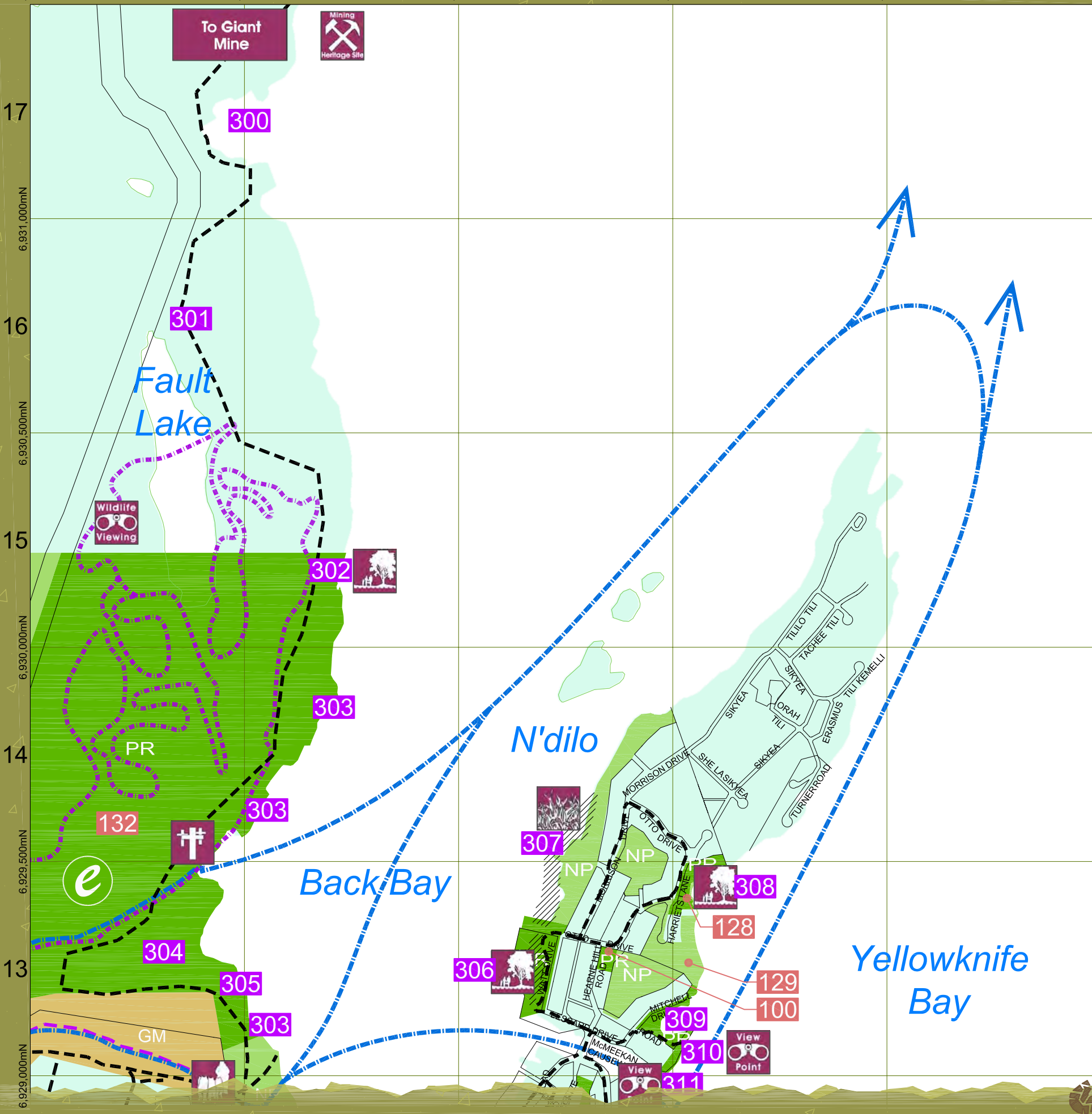
### Waterfront

- 300 Giant Mine Waterfront (M-17)
- 301 Waterfront Trail System
- 302 Waterfront Park (M-15)
- 303 Waterfront Viewpoint
- 304 Jackfish Ravine (L-13)
- 305 Back Bay Cemetery (L-13)
- 306 Waterfront Park (N-13)
- 307 Two Point Mooring Area (N-14)
- 308 Waterfront Park (O-13)
- 309 Community Docks (O-13)
- 310 Waterfront Park/Viewpoint (O-13)
- 311 Viewpoint (N-12)
- 312 Viewpoint (N-12)
- 313 Franklin Aves Walkway (N-12)
- 314 Day Use/Picnic Area (O-12)
- 315 Waterfront Park/Viewpoint (O-12)
- 316 Jolliffe Island Park (O-11)
- 317 Floating Home Mooring (N-11, N10)
- 318 Viewpoint (N-11)
- 319 Woodyard Heritage Waterfront Park (N-11)
- 320 Dettah Ice Road Access (M-10)
- 321 Viewpoint (N-10)
- 322 Community Docks (N-9)
- 323 Viewpoint (N-8)
- 324 Waterfront Trail System
- 325 Waterfront Park/Day Use (O-7)
- 326 Milner Boat Launch (N-7)
- 327 Fuel Barge Docking Facility (N-6)

This map is for DISCUSSION purposes only. Information provided is based on the best material at the time of production. Locations and features are approximate.



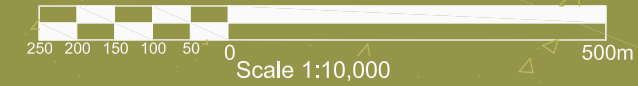
635,500mE L 636,000mE M 636,500mE N 637,000mE O 637,500mE P



# 2015 Vision

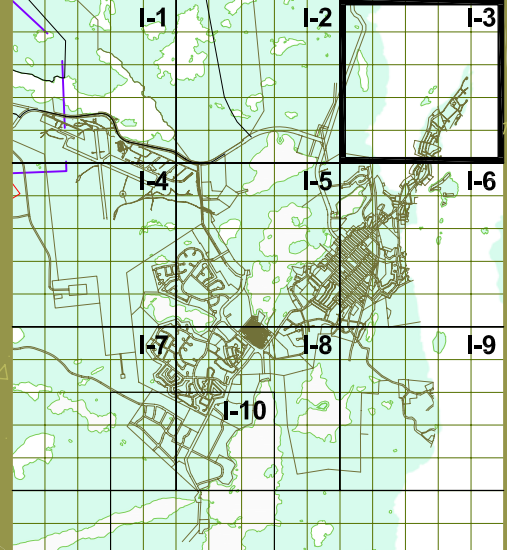


City of Yellowknife  
 Integrated Parks, Trails and  
 Open Space Development Study **Map B I-3**  
 September 2005



## Legend:

- PR Parks and Recreational Areas
  - NP Natural Preservation/Greenspace
  - Walking Trails
  - Ski Trails
  - Dog Sled Derby Trail
  - Snowmobile Route
  - Snowmobile Off Limits
  - GM Growth Management
  - Capital Area
  - Municipal Boundary
  - Seismic Reserve
  - Proposed Trail System
  - Proposed Trail System (subject to change upon review)
- 
- e Ecological Importance (see Map E)
  - A Day Use/Picnic Area
  - W Waterfront Park
  - † Cemetary
  - D Off Leash Dog Area
  - P Pedestrian Crossing
  - V View Point
  - W Wildlife Viewing
  - H Heritage Site
  - M Mining Heritage Site



### PR Public Parks and Recreation

- 100 Latham Island Park (N-13)
- 101 Bush Pilots Memorial Park (N-12)
- 102 Jolliffe Island (O-12)
- 103 School Draw Rotary Park (M-10)
- 104 School Draw Park (M-9)
- 105 Public Park (M-9)
- 106 Olexin Park (L-8)
- 107 Forrest Drive Park (K-8, L-7)
- 108 Public Park (L-8)
- 109 Public Park (K-8)
- 110 Public Park (K-9)
- 111 Samba'ke Park (K-9)
- 112 McNiven Beach (J-8)
- 113 Past Gerry Murphy Arena Site (K-9)
- 114 Public Park (G-6)
- 115 Frame Lake South Tennis Courts (I-7)
- 116 Bristol Memorial Park (G-12, H-12)
- 117 Public Park (G-6)
- 118 Public Park (G-6)
- 119 Ruth Inch Memorial Pool (J-8)
- 120 Public Library (L-9)
- 121 Tennis Courts (J-8)
- 122 Parker Recreational Field (F-7)

### Institutional Facilities

- 123 Yellowknife Community Arena (J-8)
- 124 Public Park (F-8, G-8)
- 125 Doombos Park (L-10)
- 126 St. Joseph's Playing Field (H-7)
- 127 Lakeview Cemetery (H-11, H-12)
- 128 Public Park (O-13)
- 129 Public Park (O-13)
- 130 Fritz Thell Memorial Park (M-11)
- 131 Tommy Forrest Ball Park (K-8)
- 132 Yellowknife Ski Club (L-14)
- 133 Soccer and Ball Field at William McDonald Junior High (J-7)
- 134 Playing Field at Sir John Franklin High School (M-9)
- 135 Playing Field at Mildred Hall Elementary School (K-9)
- 136 Playing Field at Range Lake North School (G-9)
- 137 Jeske Park (G-9)
- 138 Yellowknife Golf Club (not shown)
- 139 Yellowknife Curling Club (J-8)
- 140 Yellowknife Multiplex (I-7)
- 141 Outdoor Ice Rink (K-10)

### Waterfront

- 200 Solid Waste Facility (K-14)
- 201 Municipal Boat Launch (N-12)
- 202 St. Patrick High School (L-10, M-10)
- 203 Weledeh School (L-10, M-10)
- 204 Sir John Franklin High School (M-9)
- 205 Aurora College (K-9)
- 206 JH Sissons School (K-8)
- 207 Allain St. Cyr School (J-7)
- 208 William McDonald School (J-7)
- 209 Yellowknife Fire Department (I-7)
- 210 NJ Macpherson School (G-6)
- 211 St. Joseph School (H-7)
- 212 Range Lake North School (G-9)
- 213 Lakeview Cemetery (H-11)
- 214 Hospital (H-8)
- 215 Mildred Hall School (K-9)
- 216 City Hall (K-10)
- 217 RCMP (K-10)
- 218 DND (K-10)
- 219 Court House (L-10)
- 220 Visitor's Centre (K-10)
- 221 Museum (K-10)
- 222 Legislative Assembly (J-11)

### Waterfront

- 300 Giant Mine Waterfront (M-17)
- 301 Waterfront Trail System
- 302 Waterfront Park (M-15)
- 303 Waterfront Viewpoint
- 304 Jackfish Ravine (L-13)
- 305 Back Bay Cemetery (L-13)
- 306 Waterfront Park (N-13)
- 307 Two Point Mooring Area (N-14)
- 308 Waterfront Park (O-13)
- 309 Community Docks (O-13)
- 310 Waterfront Park/Viewpoint (O-13)
- 311 Viewpoint (N-12)
- 312 Viewpoint (N-12)
- 313 Franklin Ave Walkway (N-12)
- 314 Day Use/Picnic Area (O-12)
- 315 Waterfront Park/Viewpoint (O-12)
- 316 Jolliffe Island Park (O-11)
- 317 Floating Home Mooring (N-11, N10)
- 318 Viewpoint (N-11)
- 319 Woodyard Heritage Waterfront Park (N-11)
- 320 Detain Ice Road Access (M-10)
- 321 Viewpoint (N-10)
- 322 Community Docks (N-9)
- 323 Viewpoint (N-8)
- 324 Waterfront Trail System
- 325 Waterfront Park/Day Use (O-7)
- 326 Milsamer Boat Launch (N-7)
- 327 Fuel Barge Docking Facility (N-6)

This map is for DISCUSSION purposes only. Information provided is based on the best material at the time of production. Locations and features are approximate.





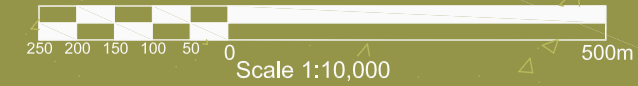
# 2015 Vision



City of Yellowknife

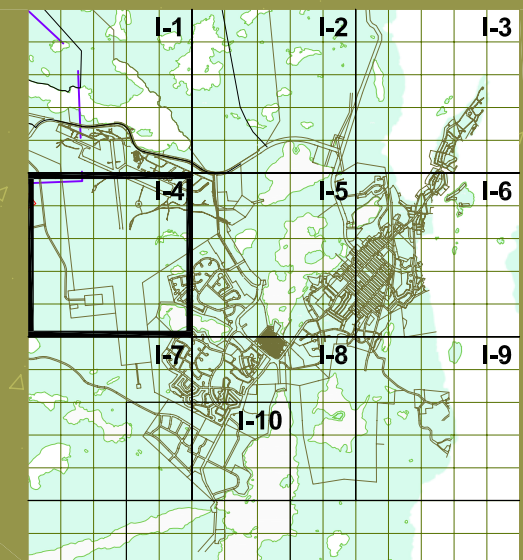
Integrated Parks, Trails and  
Open Space Development Study

Map B I-4  
September 2005



## Legend:

- PR Parks and Recreational Areas
- NP Natural Preservation/Greenspace
- Walking Trails
- Ski Trails
- Dog Sled Derby Trail
- Snowmobile Route
- Snowmobile Off Limits
- GM Growth Management
- Capital Area
- Municipal Boundary
- Seismic Reserve
- Proposed Trail System
- Proposed Trail System (subject to change upon review)
- e Ecological Importance (see Map E)
- A Day Use/Picnic Area
- W Waterfront Park
- C Cemetary
- D Off Leash Dog Area
- P Pedestrian Crossing
- V View Point
- W Wildlife Viewing
- H Heritage Site
- M Mining Heritage Site



### PR Public Parks and Recreation

- 100 Latham Island Park (N-13)
- 101 Bush Pilots Memorial Park (N-12)
- 102 Jolliffe Island (O-12)
- 103 School Draw Rotary Park (M-10)
- 104 School Draw Park (M-9)
- 105 Public Park (M-9)
- 106 Olexin Park (L-8)
- 107 Forrest Drive Park (K-8, L-7)
- 108 Public Park (L-8)
- 109 Public Park (K-8)
- 110 Public Park (K-9)
- 111 Samba'ke Park (K-9)
- 112 McNiven Beach (J-8)
- 113 Past Gerry Murphy Arena Site (K-9)
- 114 Public Park (G-6)
- 115 Frame Lake South Tennis Courts (I-7)
- 116 Bristol Memorial Park (G-12, H-12)
- 117 Public Park (G-6)
- 118 Public Park (G-6)
- 119 Ruth Inch Memorial Pool (J-8)
- 120 Public Library (L-9)
- 121 Tennis Courts (J-8)
- 122 Parker Recreational Field (F-7)

- 123 Yellowknife Community Arena (J-8)
- 124 Public Park (F-8, G-8)
- 125 Doombos Park (L-10)
- 126 St. Joseph's Playing Field (H-7)
- 127 Lakeview Cemetery (H-11, H-12)
- 128 Public Park (O-13)
- 129 Public Park (O-13)
- 130 Fritz Theil Memorial Park (M-11)
- 131 Tommy Forrest Ball Park (K-8)
- 132 Yellowknife Ski Club (L-14)
- 133 Soccer and Ball Field at William McDonald Junior High (J-7)
- 134 Playing Field at Sir John Franklin High School (M-9)
- 135 Playing Field at Mildred Hall Elementary School (K-9)
- 136 Playing Field at Range Lake North School (G-9)
- 137 Jeske Park (G-9)
- 138 Yellowknife Golf Club (not shown)
- 139 Yellowknife Curling Club (J-8)
- 140 Yellowknife Multiplex (I-7)
- 141 Outdoor Ice Rink (K-10)

### Institutional Facilities

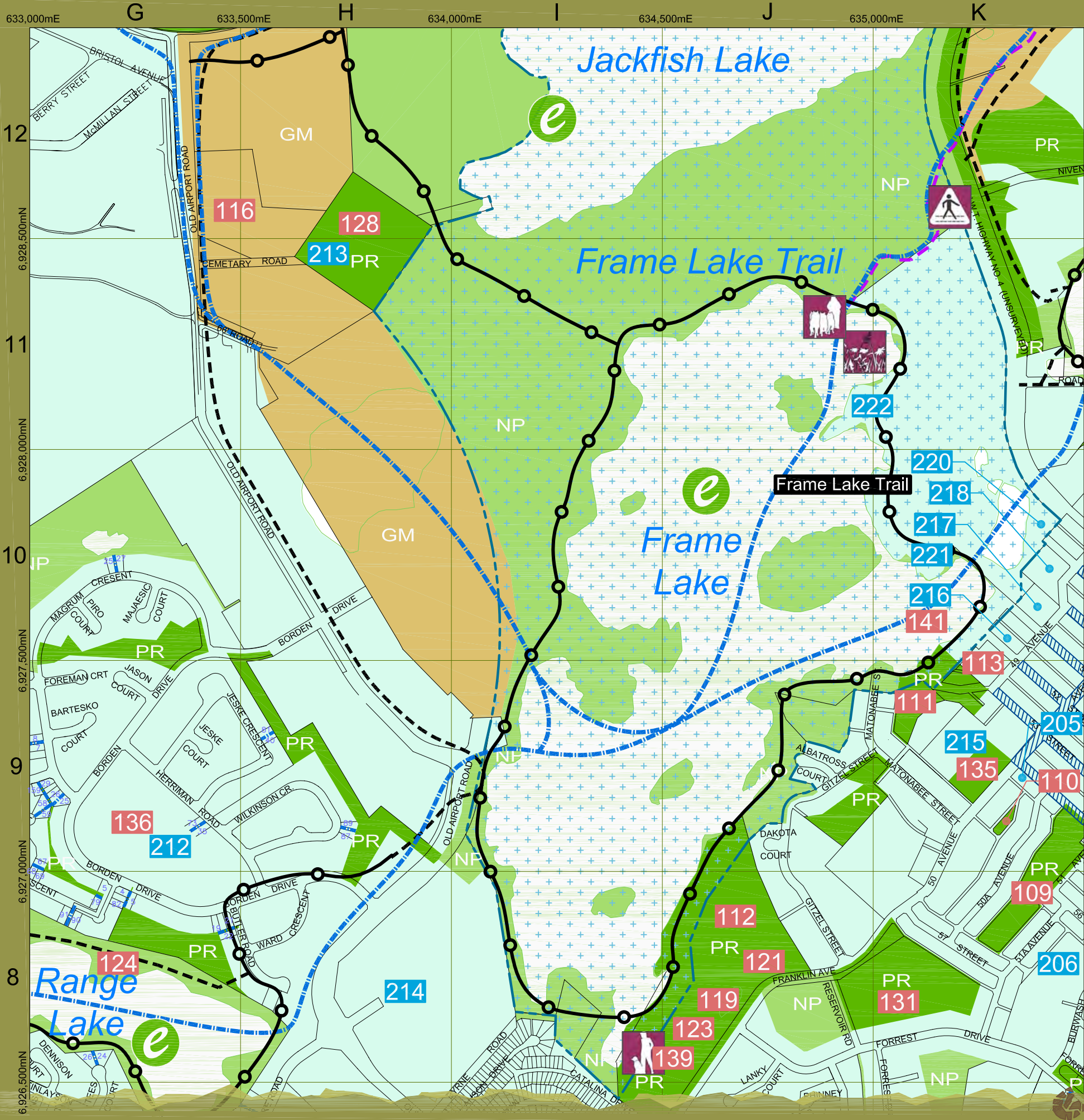
- 200 Solid Waste Facility (K-14)
- 201 Municipal Boat Launch (N-12)
- 202 St. Patrick High School (L-10, M-10)
- 203 Weledah School (L-10, M-10)
- 204 Sir John Franklin High School (M-9)
- 205 Aurora College (K-9)
- 206 JH Sissons School (K-8)
- 207 Allain St. Cyr School (J-7)
- 208 William McDonald School (J-7)
- 209 Yellowknife Fire Department (I-7)
- 210 NJ Macpherson School (G-6)
- 211 St. Joseph School (H-7)
- 212 Range Lake North School (G-9)
- 213 Lakeview Cemetery (H-11)
- 214 Hospital (H-8)
- 215 Mildred Hall School (K-9)
- 216 City Hall (K-10)
- 217 RCMP (K-10)
- 218 DND (K-10)
- 219 Court House (L-10)
- 220 Visitor's Centre (K-10)
- 221 Museum (K-10)
- 222 Legeslatlve Assembly (J-11)

### Waterfront

- 300 Giant Mine Waterfront (M-17)
- 301 Waterfront Trail System
- 302 Waterfront Park (M-15)
- 303 Waterfront Viewpoint
- 304 Jackfish Ravine (L-13)
- 305 Back Bay Cemetery (L-13)
- 306 Waterfront Park (N-13)
- 307 Two Point Mooring Area (N-14)
- 308 Waterfront Park (O-13)
- 309 Community Docks (O-13)
- 310 Waterfront Park/Viewpoint (O-13)
- 311 Viewpoint (N-12)
- 312 Viewpoint (N-12)
- 313 Franklin Aves Walkway (N-12)
- 314 Day Use/Picnic Area (O-12)
- 315 Waterfront Park/Viewpoint (O-12)
- 316 Jolliffe Island Park (O-11)
- 317 Floating Home Mooring (N-11, N10)
- 318 Viewpoint (N-11)
- 319 Woodyard Heritage Waterfront Park (N-11)
- 320 Dettah Ice Road Access (M-10)
- 321 Viewpoint (N-10)
- 322 Community Docks (N-9)
- 323 Viewpoint (N-8)
- 324 Waterfront Trail System
- 325 Waterfront Park/Day Use (O-7)
- 326 Milnamer Boat Launch (N-7)
- 327 Fuel Barge Docking Facility (N-6)

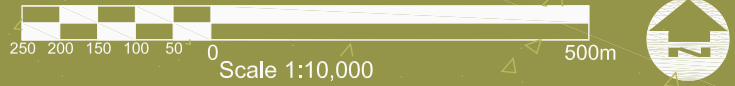
This map is for DISCUSSION purposes only. Information provided is based on the best material at the time of production. Locations and features are approximate.





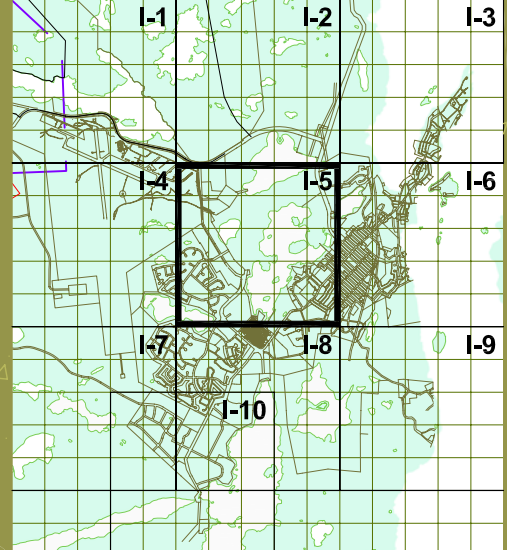
# 2015 Vision

City of Yellowknife  
 Integrated Parks, Trails and  
 Open Space Development Study **Map B I-5**  
 September 2005



## Legend:

- PR Parks and Recreational Areas
- NP Natural Preservation/Greenspace
- Walking Trails
- Ski Trails
- Dog Sled Derby Trail
- Snowmobile Route
- Snowmobile Off Limits
- GM Growth Management
- Capital Area
- Municipal Boundary
- Seismic Reserve
- Proposed Trail System (subject to change upon review)
- e Ecological Importance (see Map E)
- A Day Use/Picnic Area
- W Waterfront Park
- C Cemetary
- D Off Leash Dog Area
- P Pedestrian Crossing
- V View Point
- W Wildlife Viewing
- H Heritage Site
- M Mining Heritage Site



### PR Public Parks and Recreation

- 100 Latham Island Park (N-13)
- 101 Bush Pilots Memorial Park (N-12)
- 102 Jolliffe Island (O-12)
- 103 Schoold Draw Rotary Park (M-10)
- 104 School Draw Park (M-9)
- 105 Public Park (M-9)
- 106 Olexin Park (L-8)
- 107 Forrest Drive Park (K-8,L-7)
- 108 Public Park (L-8)
- 109 Public Park (K-8)
- 110 Public Park (K-9)
- 111 Samba'ke Park (K-9)
- 112 McNiven Beach (J-8)
- 113 Past Gerry Murphy Arena Site (K-9)
- 114 Public Park (G-6)
- 115 Frame Lake South Tennis Courts (I-7)
- 116 Bristol Memorial Park (G-12, H-12)
- 117 Public Park (G-6)
- 118 Public Park (G-6)
- 119 Ruth Inch Memorial Pool (J-8)
- 120 Public Library (L-9)
- 121 Tennis Courts (J-8)
- 122 Parker Recreational Field (F-7)

### Institutional Facilities

- 123 Yellowknife Community Arena (J-8)
- 124 Public Park (F-8, G-8)
- 125 Doombos Park (L-10)
- 126 St. Joseph's Playing Field (H-7)
- 127 Lakeview Cemetery (H-11, H-12)
- 128 Public Park (O-13)
- 129 Public Park (O-13)
- 130 Fritz Thell Memorial Park (M-11)
- 131 Tommy Forrest Ball Park (K-8)
- 132 Yellowknife Ski Club (L-14)
- 133 Soccer and Ball Field at William McDonald Junior High (J-7)
- 134 Playing Field at Sir John Franklin High School (M-9)
- 135 Playing Field at Mildred Hall Elementary School (K-9)
- 136 Playing Field at Range Lake North School (G-9)
- 137 Jeske Park (G-9)
- 138 Yellowknife Golf Club (not shown)
- 139 Yellowknife Curling Club (J-8)
- 140 Yellowknife Multiplex (I-7)
- 141 Outdoor Ice Rink (K-10)

### Waterfront

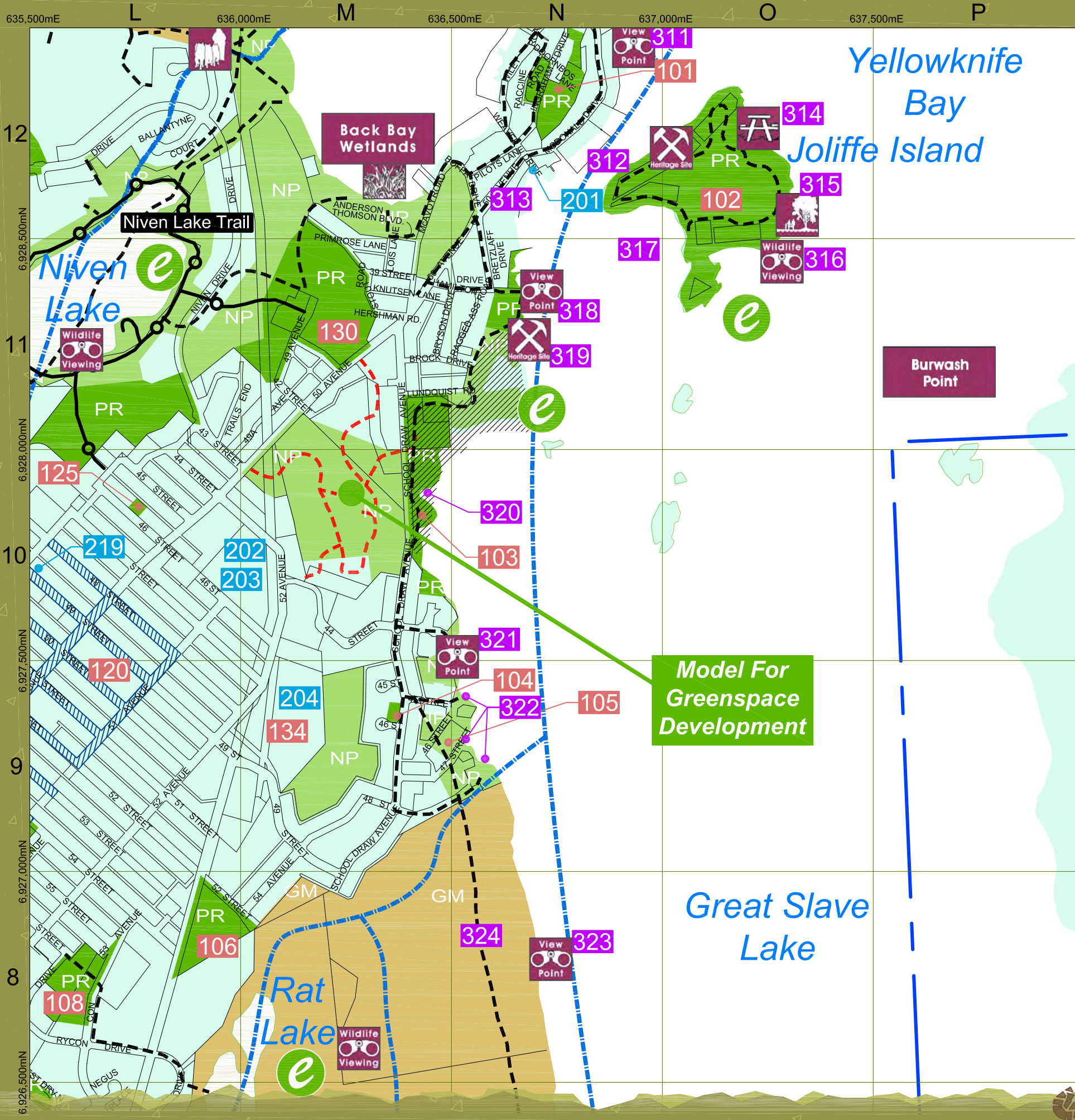
- 200 Solid Waste Facility (K-14)
- 201 Municipal Boat Launch (N-12)
- 202 St. Patrick High School (L-10, M-10)
- 203 Weledeh School (L-10, M-10)
- 204 Sir John Franklin High School (M-9)
- 205 Aurora College (K-9)
- 206 JH Sissons School (K-8)
- 207 Allain St. Cyr School (J-7)
- 208 William McDonald School (J-7)
- 209 Yellowknife Fire Department (I-7)
- 210 NJ Macpherson School (G-6)
- 211 St. Joseph School (H-7)
- 212 Range Lake North School (G-9)
- 213 Lakeview Cemetery (H-11)
- 214 Hospital (H-8)
- 215 Mildred Hall School (K-9)
- 216 City Hall (K-10)
- 217 RCMP (K-10)
- 218 DND (K-10)
- 219 Court House (L-10)
- 220 Visitor's Centre (K-10)
- 221 Museum (K-10)
- 222 Legeslative Assembly (J-11)

### Waterfront

- 300 Giant Mine Waterfront (M-17)
- 301 Waterfront Trail System
- 302 Waterfront Park (M-15)
- 303 Waterfront Viewpoint
- 304 Jackfish Ravine (L-13)
- 305 Back Bay Cemetery (L-13)
- 306 Waterfront Park (N-13)
- 307 Two Point Mooring Area (N-14)
- 308 Waterfront Park (O-13)
- 309 Community Docks (O-13)
- 310 Waterfront Park/Viewpoint (O-13)
- 311 Viewpoint (N-12)
- 312 Viewpoint (N-12)
- 313 Franklin Ave Walkway (N-12)
- 314 Day Use/Picnic Area (O-12)
- 315 Waterfront Park/Viewpoint (O-12)
- 316 Jolliffe Island Park (O-11)
- 317 Floating Home Mooring (N-11, N10)
- 318 Viewpoint (N-11)
- 319 Woodyard Heritage Waterfront Park (N-11)
- 320 Dettah Ice Road Access (M-10)
- 321 Viewpoint (N-10)
- 322 Community Docks (N-9)
- 323 Viewpoint (N-8)
- 324 Waterfront Trail System
- 325 Waterfront Park/Day Use (O-7)
- 326 Milsam Boat Launch (N-7)
- 327 Fuel Barge Docking Facility (N-6)

This map is for DISCUSSION purposes only. Information provided is based on the best material at the time of production. Locations and features are approximate.

Leave Your Mark



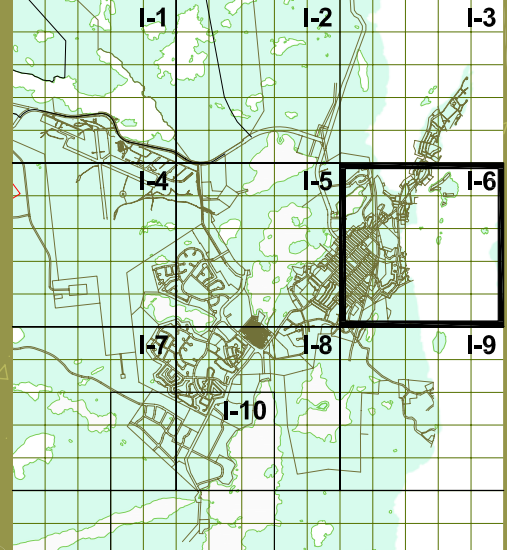
# 2015 Vision

City of Yellowknife  
 Integrated Parks, Trails and Open Space Development Study  
 Map B I-6  
 September 2005



## Legend:

- PR Parks and Recreational Areas
- NP Natural Preservation/Greenspace
- Walking Trails
- Ski Trails
- Dog Sled Derby Trail
- Snowmobile Route
- Snowmobile Off Limits
- GM Growth Management
- Capital Area
- Municipal Boundary
- Seismic Reserve
- Proposed Trail System (subject to change upon review)
- e Ecological Importance (see Map E)
- A Day Use/Picnic Area
- W Waterfront Park
- C Cemetary
- D Off Leash Dog Area
- V View Point
- WV Wildlife Viewing
- HS Heritage Site
- MHS Mining Heritage Site
- PC Pedestrian Crossing

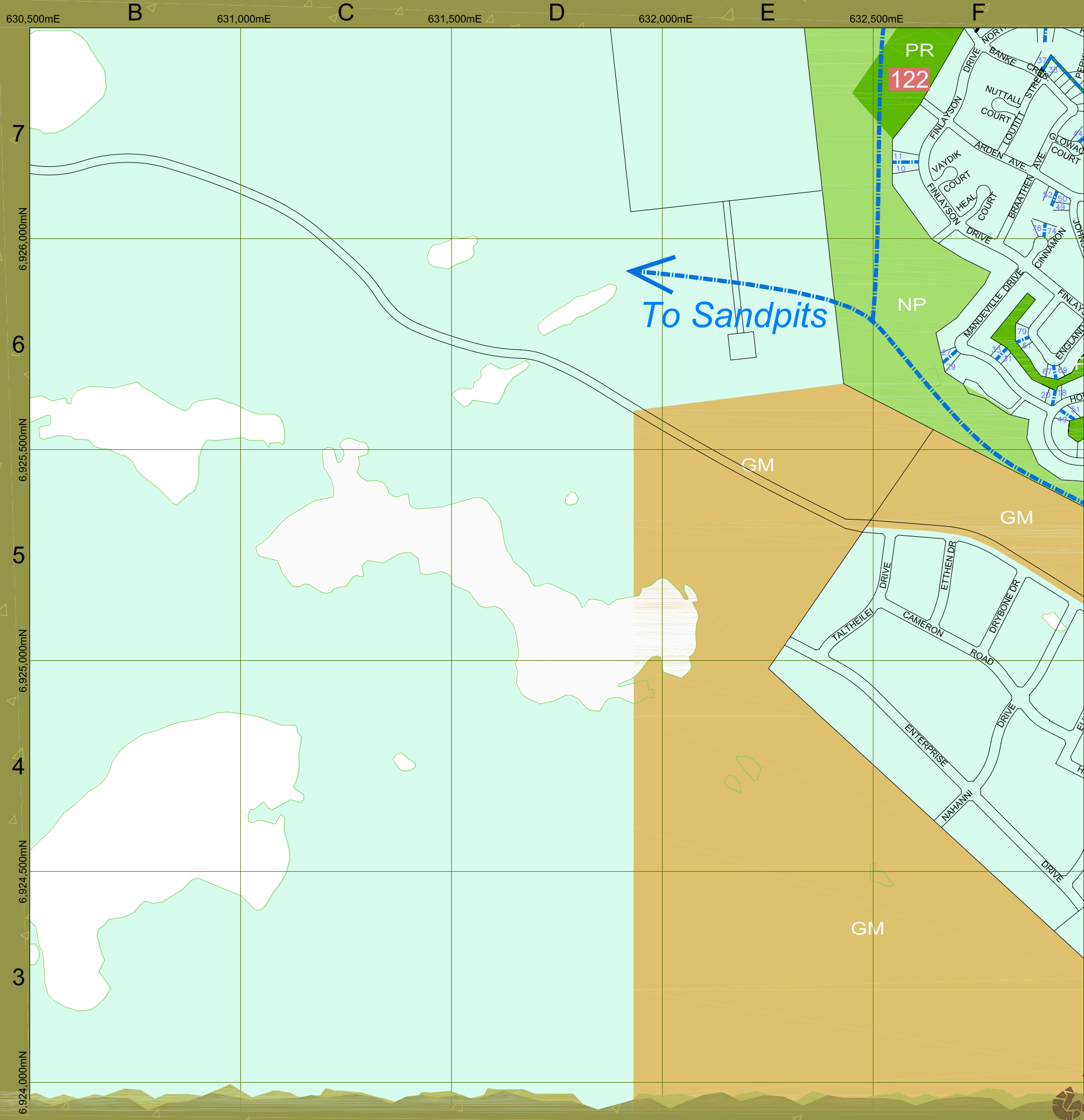


**Model For Greenspace Development**

PR Public Parks and Recreation	Institutional Facilities	Waterfront
100 Latham Island Park (N-13) 101 Bush Pilots Memorial Park (N-12) 102 Joliffe Island (O-12) 103 School Draw Rotary Park (M-10) 104 School Draw Park (M-9) 105 Public Park (M-9) 106 Olexin Park (L-8) 107 Forrest Drive Park (K-8, L-7) 108 Public Park (L-8) 109 Public Park (K-8) 110 Public Park (K-9) 111 Samba'ke Park (K-9) 112 McNiven Beach (J-8) 113 Past Gerry Murphy Arena Site (K-9) 114 Public Park (G-6) 115 Frame Lake South Tennis Courts (I-7) 116 Bristol Memorial Park (G-12, H-12) 117 Public Park (G-6) 118 Public Park (G-6) 119 Ruth Inch Memorial Pool (J-8) 120 Public Library (L-9) 121 Tennis Courts (J-8) 122 Parker Recreational Field (F-7)	123 Yellowknife Community Arena (J-8) 124 Public Park (F-8, G-8) 125 Doombos Park (L-10) 126 St. Joseph's Playing Field (H-7) 127 Lakeview Cemetery (H-11, H-12) 128 Public Park (O-13) 129 Public Park (O-13) 130 Fritz Thell Memorial Park (M-11) 131 Tommy Forrest Ball Park (K-8) 132 Yellowknife Ski Club (L-14) 133 Soccer and Ball Field at William McDonald Junior High (J-7) 134 Playing Field at Sir John Franklin High School (M-9) 135 Playing Field at Mildred Hall Elementary School (K-9) 136 Playing Field at Range Lake North School (G-9) 137 Jeske Park (G-9) 138 Yellowknife Golf Club (not shown) 139 Yellowknife Curling Club (J-8) 140 Yellowknife Multiplex (I-7) 141 Outdoor Ice Rink (K-10)	200 Solid Waste Facility (K-14) 201 Municipal Boat Launch (N-12) 202 St. Patrick High School (L-10, M-10) 203 Weleden School (L-10, M-10) 204 Sir John Franklin High School (M-9) 205 Aurora College (K-9) 206 JH Sissons School (K-8) 207 Allain St. Cyr School (J-7) 208 William McDonald School (J-7) 209 Yellowknife Fire Department (I-7) 210 NJ Macpherson School (G-6) 211 St. Joseph School (H-7) 212 Range Lake North School (G-9) 213 Lakeview Cemetery (H-11) 214 Hospital (H-8) 215 Mildred Hall School (K-9) 216 City Hall (K-10) 217 RCMP (K-10) 218 DND (K-10) 219 Court House (L-10) 220 Visitor's Centre (K-10) 221 Museum (K-10) 222 Legislative Assembly (J-11)
300 Giant Mine Waterfront (M-17) 301 Waterfront Trail System 302 Waterfront Park (M-15) 303 Waterfront Viewpoint 304 Jackfish Ravine (L-13) 305 Back Bay Cemetery (L-13) 306 Waterfront Park (N-13) 307 Two Point Mooring Area (N-14) 308 Waterfront Park (O-13) 309 Community Docks (O-13) 310 Waterfront Park/Viewpoint (O-13) 311 Viewpoint (N-12) 312 Viewpoint (N-12) 313 Franklin Ave Walkway (N-12) 314 Day Use/Picnic Area (O-12) 315 Waterfront Park/Viewpoint (O-12) 316 Joliffe Island Park (O-11) 317 Floating Home Mooring (N-11, N10) 318 Viewpoint (N-11) 319 Woodyard Heritage Waterfront Park (N-11) 320 Dettan Ice Road Access (M-10) 321 Viewpoint (N-10) 322 Community Docks (N-9) 323 Viewpoint (N-8) 324 Waterfront Trail System 325 Waterfront Park/Day Use (O-7) 326 Milnamur Boat Launch (N-7) 327 Fuel Barge Docking Facility (N-6)		

This map is for DISCUSSION purposes only. Information provided is based on the best material at the time of production. Locations and features are approximate.





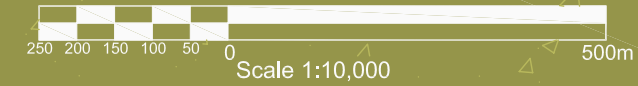
# 2015 Vision



City of Yellowknife

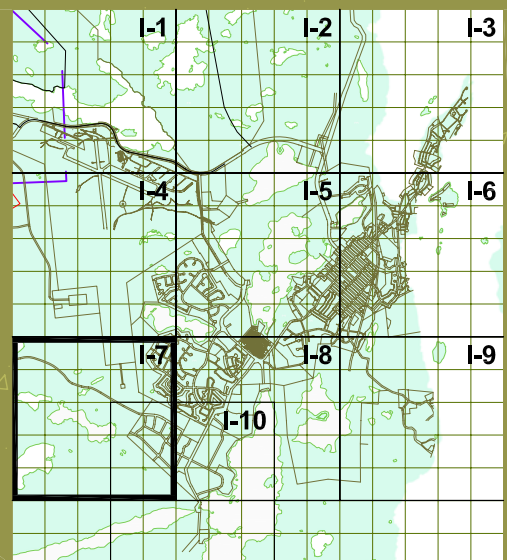
Integrated Parks, Trails and Open Space Development Study

Map B I-7  
September 2005



## Legend:

- PR Parks and Recreational Areas
  - NP Natural Preservation/Greenspace
  - Walking Trails
  - Ski Trails
  - Dog Sled Derby Trail
  - Snowmobile Route
  - Snowmobile Off Limits
  - GM Growth Management
  - Capital Area
  - Municipal Boundary
  - Seismic Reserve
  - Proposed Trail System
  - Proposed Trail System (subject to change upon review)
- 
- e Ecological Importance (see Map E)
  - A Day Use/Picnic Area
  - W Waterfront Park
  - C Cemetary
  - D Off Leash Dog Area
  - P Pedestrian Crossing
  - V View Point
  - W Wildlife Viewing
  - H Heritage Site
  - M Mining Heritage Site



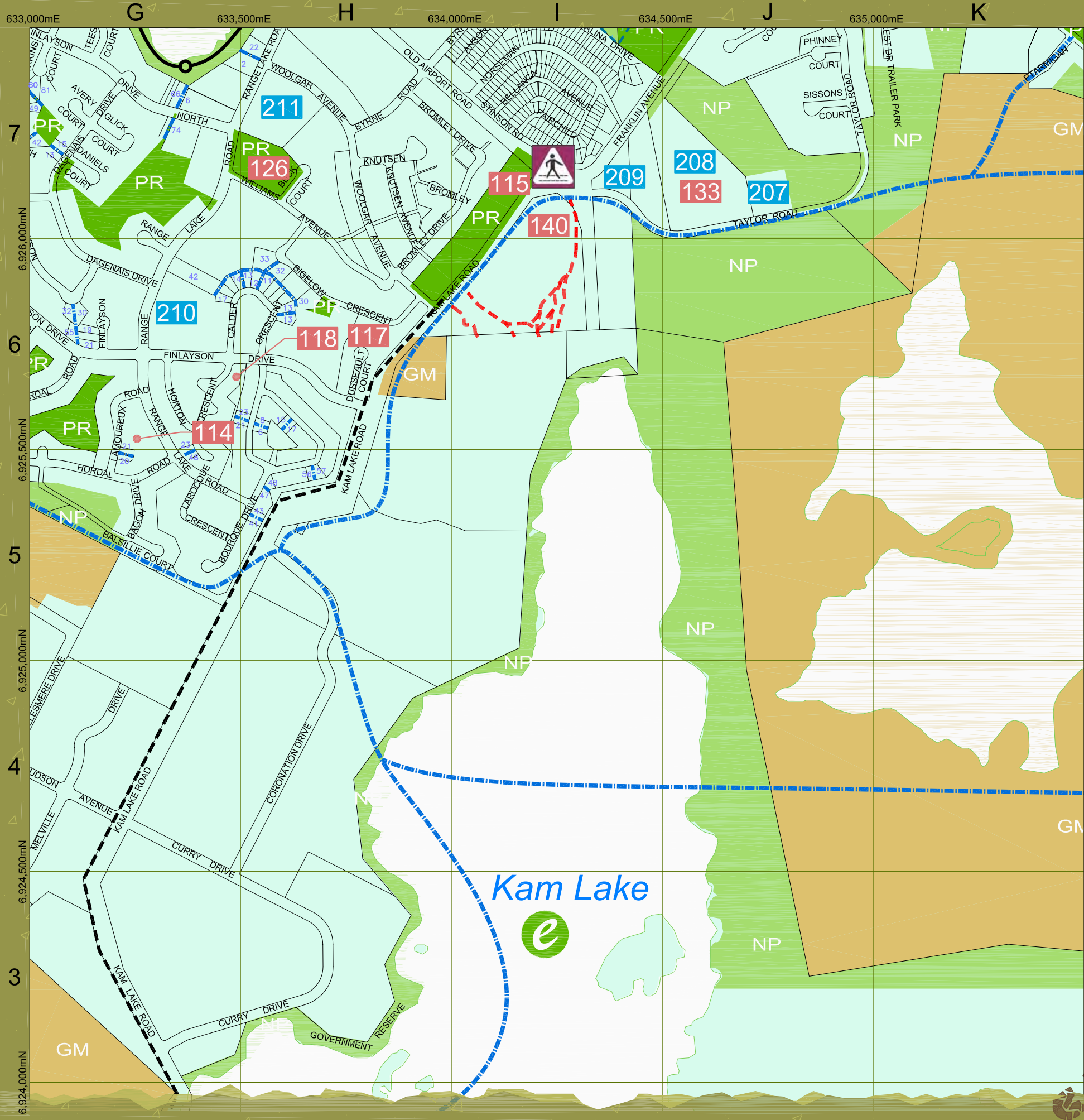
- ### PR Public Parks and Recreation
- 100 Latham Island Park (N-13)
  - 101 Bush Pilots Memorial Park (N-12)
  - 102 Jolliffe Island (O-12)
  - 103 School Draw Rotary Park (M-10)
  - 104 School Draw Park (M-9)
  - 105 Public Park (M-9)
  - 106 Olexin Park (L-8)
  - 107 Forrest Drive Park (K-8, L-7)
  - 108 Public Park (L-8)
  - 109 Public Park (K-8)
  - 110 Public Park (K-9)
  - 111 Samba'ke Park (K-9)
  - 112 McNiven Beach (J-8)
  - 113 Past Gerry Murphy Arena Site (K-9)
  - 114 Public Park (G-6)
  - 115 Frame Lake South Tennis Courts (I-7)
  - 116 Bristol Memorial Park (G-12, H-12)
  - 117 Public Park (G-6)
  - 118 Public Park (G-6)
  - 119 Ruth Inch Memorial Pool (J-8)
  - 120 Public Library (L-9)
  - 121 Tennis Courts (J-8)
  - 122 Parker Recreational Field (F-7)
  - 123 Yellowknife Community Arena (J-8)
  - 124 Public Park (F-8, G-8)
  - 125 Doombos Park (L-10)
  - 126 St. Joseph's Playing Field (H-7)
  - 127 Lakeview Cemetery (H-11, H-12)
  - 128 Public Park (O-13)
  - 129 Public Park (O-13)
  - 130 Fritz Thell Memorial Park (M-11)
  - 131 Tommy Forrest Ball Park (K-8)
  - 132 Yellowknife Ski Club (L-14)
  - 133 Soccer and Ball Field at William McDonald Junior High (J-7)
  - 134 Playing Field at Sir John Franklin High School (M-9)
  - 135 Playing Field at Mildred Hall Elementary School (K-9)
  - 136 Playing Field at Range Lake North School (G-9)
  - 137 Jeske Park (G-9)
  - 138 Yellowknife Golf Club (not shown)
  - 139 Yellowknife Curling Club (J-8)
  - 140 Yellowknife Multiplex (I-7)
  - 141 Outdoor Ice Rink (K-10)

- ### Institutional Facilities
- 200 Solid Waste Facility (K-14)
  - 201 Municipal Boat Launch (N-12)
  - 202 St. Patrick High School (L-10, M-10)
  - 203 Weledeh School (L-10, M-10)
  - 204 Sir John Franklin High School (M-9)
  - 205 Aurora College (K-9)
  - 206 JH Sissons School (K-8)
  - 207 Allain St. Cyr School (J-7)
  - 208 William McDonald School (J-7)
  - 209 Yellowknife Fire Department (I-7)
  - 210 NJ Macpherson School (G-6)
  - 211 St. Joseph School (H-7)
  - 212 Range Lake North School (G-9)
  - 213 Lakeview Cemetery (H-11)
  - 214 Hospital (H-8)
  - 215 Mildred Hall School (K-9)
  - 216 City Hall (K-10)
  - 217 RCMP (K-10)
  - 218 DND (K-10)
  - 219 Court House (L-10)
  - 220 Visitor's Centre (K-10)
  - 221 Museum (K-10)
  - 222 Legislative Assembly (J-11)

- ### Waterfront
- 300 Giant Mine Waterfront (M-17)
  - 301 Waterfront Trail System
  - 302 Waterfront Park (M-15)
  - 303 Waterfront Viewpoint
  - 304 Jackfish Ravine (L-13)
  - 305 Back Bay Cemetery (L-13)
  - 306 Waterfront Park (N-13)
  - 307 Two Point Mooring Area (N-14)
  - 308 Waterfront Park (O-13)
  - 309 Community Docks (O-13)
  - 310 Waterfront Park/Viewpoint (O-13)
  - 311 Viewpoint (N-12)
  - 312 Viewpoint (N-12)
  - 313 Franklin Aves Walkway (N-12)
  - 314 Day Use/Picnic Area (O-12)
  - 315 Waterfront Park/Viewpoint (O-12)
  - 316 Jolliffe Island Park (O-11)
  - 317 Floating Home Mooring (N-11, N10)
  - 318 Viewpoint (N-11)
  - 319 Woodyard Heritage Waterfront Park (N-11)
  - 320 Dettah Ice Road Access (M-10)
  - 321 Viewpoint (N-10)
  - 322 Community Docks (N-9)
  - 323 Viewpoint (N-8)
  - 324 Waterfront Trail System
  - 325 Waterfront Park/Day Use (O-7)
  - 326 Milnamer Boat Launch (N-7)
  - 327 Fuel Barge Docking Facility (N-6)

This map is for DISCUSSION purposes only. Information provided is based on the best material at the time of production. Locations and features are approximate.

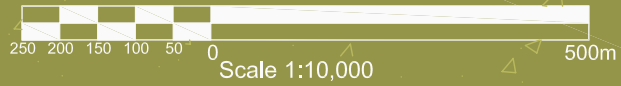




# 2015 Vision

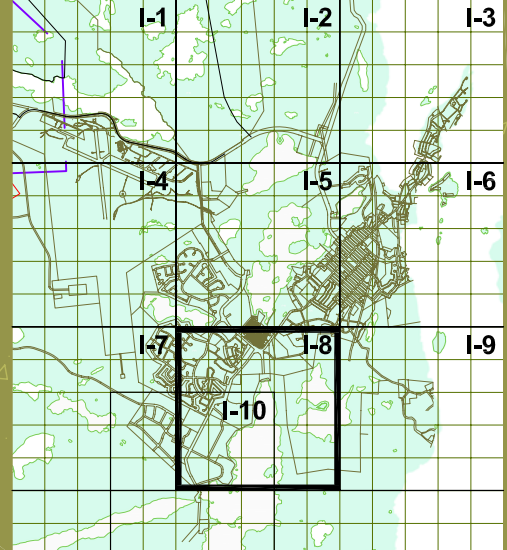


City of Yellowknife  
 Integrated Parks, Trails and  
 Open Space Development Study  
 Map B I-8  
 September 2005



## Legend:

- PR Parks and Recreational Areas
- NP Natural Preservation/Greenspace
- Walking Trails
- Ski Trails
- Dog Sled Derby Trail
- Snowmobile Route
- Snowmobile Off Limits
- GM Growth Management
- Capital Area
- Municipal Boundary
- Seismic Reserve
- Proposed Trail System (subject to change upon review)
- e Ecological Importance (see Map E)
- A Day Use/Picnic Area
- W Waterfront Park
- C Cemetary
- D Off Leash Dog Area
- P Pedestrian Crossing
- V View Point
- W Wildlife Viewing
- H Heritage Site
- M Mining Heritage Site



### PR Public Parks and Recreation

- 100 Latham Island Park (N-13)
- 101 Bush Pilots Memorial Park (N-12)
- 102 Jolliffe Island (O-12)
- 103 School Draw Rotary Park (M-10)
- 104 School Draw Park (M-9)
- 105 Public Park (M-9)
- 106 Olexin Park (L-8)
- 107 Forrest Drive Park (K-8, L-7)
- 108 Public Park (L-8)
- 109 Public Park (K-8)
- 110 Public Park (K-9)
- 111 Samba'ke Park (K-9)
- 112 McNiven Beach (J-8)
- 113 Past Gerry Murphy Arena Site (K-9)
- 114 Public Park (G-6)
- 115 Frame Lake South Tennis Courts (I-7)
- 116 Bristol Memorial Park (G-12, H-12)
- 117 Public Park (G-6)
- 118 Public Park (G-6)
- 119 Ruth Inch Memorial Pool (J-8)
- 120 Public Library (L-9)
- 121 Tennis Courts (J-8)
- 122 Parker Recreational Field (F-7)

### Institutional Facilities

- 123 Yellowknife Community Arena (J-8)
- 124 Public Park (F-8, G-8)
- 125 Doombos Park (L-10)
- 126 St. Joseph's Playing Field (H-7)
- 127 Lakeview Cemetery (H-11, H-12)
- 128 Public Park (O-13)
- 129 Public Park (O-13)
- 130 Fritz Thell Memorial Park (M-11)
- 131 Tommy Forrest Ball Park (K-8)
- 132 Yellowknife Ski Club (L-14)
- 133 Soccer and Ball Field at William McDonald Junior High (J-7)
- 134 Playing Field at Sir John Franklin High School (M-9)
- 135 Playing Field at Mildred Hall Elementary School (K-9)
- 136 Playing Field at Range Lake North School (G-9)
- 137 Jeske Park (G-9)
- 138 Yellowknife Golf Club (not shown)
- 139 Yellowknife Curling Club (J-8)
- 140 Yellowknife Multiplex (I-7)
- 141 Outdoor Ice Rink (K-10)

### Waterfront

- 200 Solid Waste Facility (K-14)
- 201 Municipal Boat Launch (N-12)
- 202 St. Patrick High School (L-10, M-10)
- 203 Weledeh School (L-10, M-10)
- 204 Sir John Franklin High School (M-9)
- 205 Aurora College (K-9)
- 206 JH Sissons School (K-8)
- 207 Allain St. Cyr School (J-7)
- 208 William McDonald School (J-7)
- 209 Yellowknife Fire Department (I-7)
- 210 NJ Macpherson School (G-6)
- 211 St. Joseph School (H-7)
- 212 Range Lake North School (G-9)
- 213 Lakeview Cemetery (H-11)
- 214 Hospital (H-8)
- 215 Mildred Hall School (K-9)
- 216 City Hall (K-10)
- 217 RCMP (K-10)
- 218 DND (K-10)
- 219 Court House (L-10)
- 220 Visitor's Centre (K-10)
- 221 Museum (K-10)
- 222 Legislative Assembly (J-11)

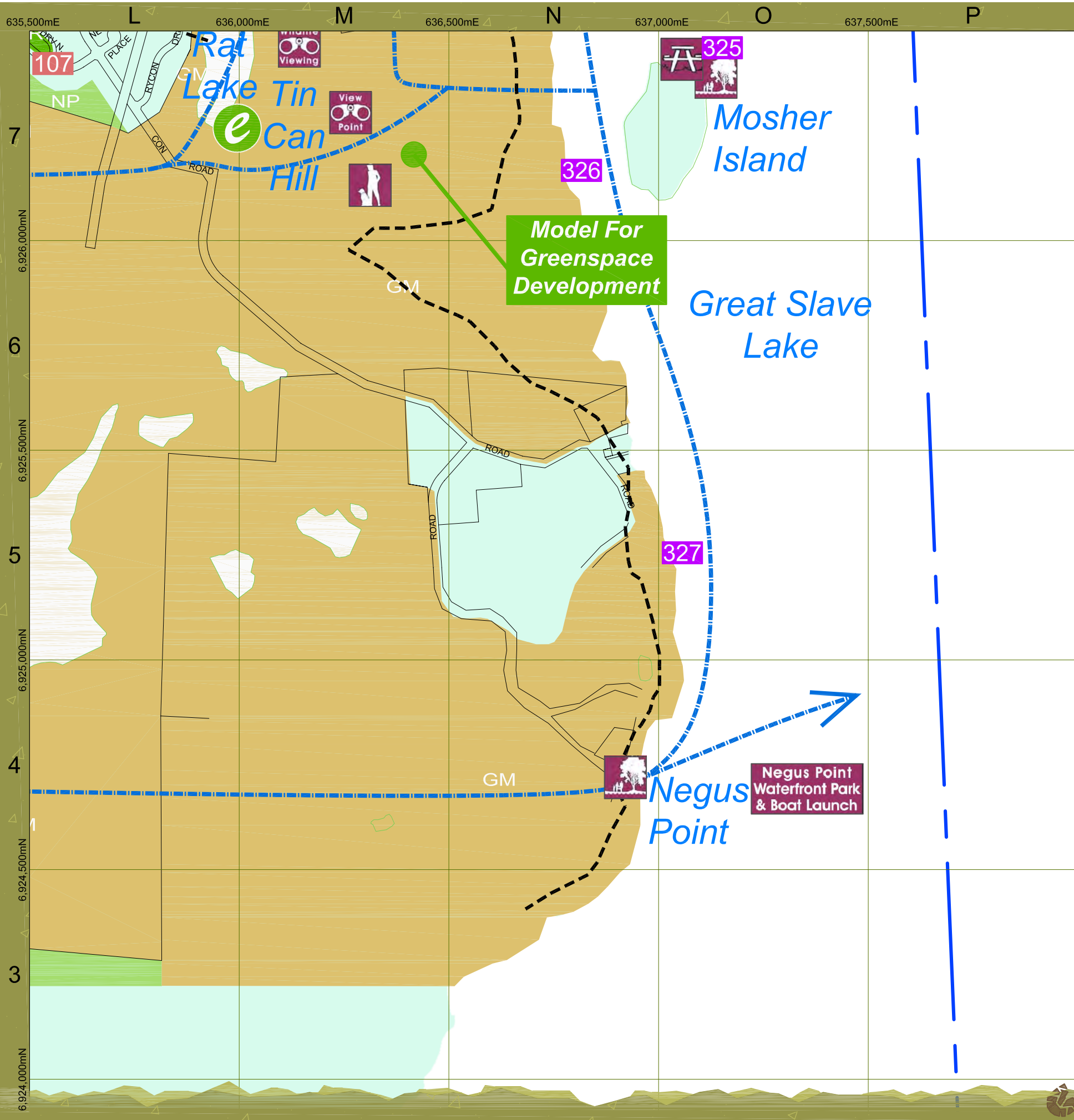
### Waterfront

- 300 Giant Mine Waterfront (M-17)
- 301 Waterfront Trail System
- 302 Waterfront Park (M-15)
- 303 Waterfront Viewpoint
- 304 Jackfish Ravine (L-13)
- 305 Back Bay Cemetery (L-13)
- 306 Waterfront Park (N-13)
- 307 Two Point Mooring Area (N-14)
- 308 Waterfront Park (O-13)
- 309 Community Docks (O-13)
- 310 Waterfront Park/Viewpoint (O-13)
- 311 Viewpoint (N-12)
- 312 Viewpoint (N-12)
- 313 Franklin Aves Walkway (N-12)
- 314 Day Use/Picnic Area (O-12)
- 315 Waterfront Park/Viewpoint (O-12)
- 316 Jolliffe Island Park (O-11)
- 317 Floating Home Mooring (N-11, N10)
- 318 Viewpoint (N-11)
- 319 Woodyard Heritage Waterfront Park (N-11)
- 320 Dettah Ice Road Access (M-10)
- 321 Viewpoint (N-10)
- 322 Community Docks (N-9)
- 323 Viewpoint (N-8)
- 324 Waterfront Trail System
- 325 Waterfront Park/Day Use (O-7)
- 326 Milnamar Boat Launch (N-7)
- 327 Fuel Barge Docking Facility (N-6)

This map is for DISCUSSION purposes only. Information provided is based on the best material at the time of production. Locations and features are approximate.







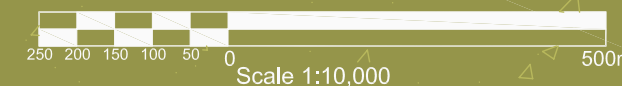
# 2015 Vision



City of Yellowknife

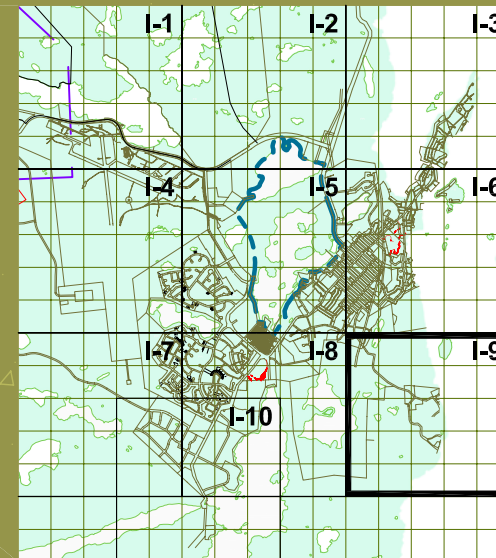
Integrated Parks, Trails and  
Open Space Development Study

Map B I-9  
September 2005



## Legend:

- PR Parks and Recreational Areas
  - NP Natural Preservation/Greenspace
  - Walking Trails
  - Ski Trails
  - Dog Sled Derby Trail
  - Snowmobile Route
  - Snowmobile Off Limits
  - GM Growth Management
  - Capital Area
  - Municipal Boundary
  - Seismic Reserve
  - Proposed Trail System
  - Proposed Trail System (subject to change upon review)
- 
- e Ecological Importance (see Map E)
  - A Day Use/Picnic Area
  - W Waterfront Park
  - C Cemetary
  - D Off Leash Dog Area
  - P Pedestrian Crossing
  - V View Point
  - W Wildlife Viewing
  - H Heritage Site
  - M Mining Heritage Site



### PR Public Parks and Recreation

- 100 Latham Island Park (N-13)
- 101 Bush Pilots Memorial Park (N-12)
- 102 Jolliffe Island (O-12)
- 103 School Draw Rotary Park (M-10)
- 104 School Draw Park (M-9)
- 105 Public Park (M-9)
- 106 Olexin Park (L-8)
- 107 Forrest Drive Park (K-8, L-7)
- 108 Public Park (L-8)
- 109 Public Park (K-8)
- 110 Public Park (K-9)
- 111 Samba'ke Park (K-9)
- 112 McNiven Beach (J-8)
- 113 Past Gerry Murphy Arena Site (K-9)
- 114 Public Park (G-6)
- 115 Frame Lake South Tennis Courts (I-7)
- 116 Bristol Memorial Park (G-12, H-12)
- 117 Public Park (G-6)
- 118 Public Park (G-6)
- 119 Ruth Inch Memorial Pool (J-8)
- 120 Public Library (L-9)
- 121 Tennis Courts (J-8)
- 122 Parker Recreational Field (F-7)

### Institutional Facilities

- 123 Yellowknife Community Arena (J-8)
- 124 Public Park (F-8, G-8)
- 125 Doombos Park (L-10)
- 126 St. Joseph's Playing Field (H-7)
- 127 Lakeview Cemetery (H-11, H-12)
- 128 Public Park (O-13)
- 129 Public Park (O-13)
- 130 Fritz Thell Memorial Park (M-11)
- 131 Tommy Forrest Ball Park (K-8)
- 132 Yellowknife Ski Club (L-14)
- 133 Soccer and Ball Field at William McDonald Junior High (J-7)
- 134 Playing Field at Sir John Franklin High School (M-9)
- 135 Playing Field at Mildred Hall Elementary School (K-9)
- 136 Playing Field at Range Lake North School (G-9)
- 137 Jeske Park (G-9)
- 138 Yellowknife Golf Club (not shown)
- 139 Yellowknife Curling Club (J-8)
- 140 Yellowknife Multiplex (I-7)
- 141 Outdoor Ice Rink (K-10)

### Waterfront

- 200 Solid Waste Facility (K-14)
- 201 Municipal Boat Launch (N-12)
- 202 St. Patrick High School (L-10, M-10)
- 203 Weledeh School (L-10, M-10)
- 204 Sir John Franklin High School (M-9)
- 205 Aurora College (K-9)
- 206 JH Sissons School (K-8)
- 207 Allain St. Cyr School (J-7)
- 208 William McDonald School (J-7)
- 209 Yellowknife Fire Department (I-7)
- 210 NJ Macpherson School (G-6)
- 211 St. Joseph School (H-7)
- 212 Range Lake North School (G-9)
- 213 Lakeview Cemetery (H-11)
- 214 Hospital (H-8)
- 215 Mildred Hall School (K-9)
- 216 City Hall (K-10)
- 217 RCMP (K-10)
- 218 DND (K-10)
- 219 Court House (L-10)
- 220 Visitor's Centre (K-10)
- 221 Museum (K-10)
- 222 Legislative Assembly (J-11)

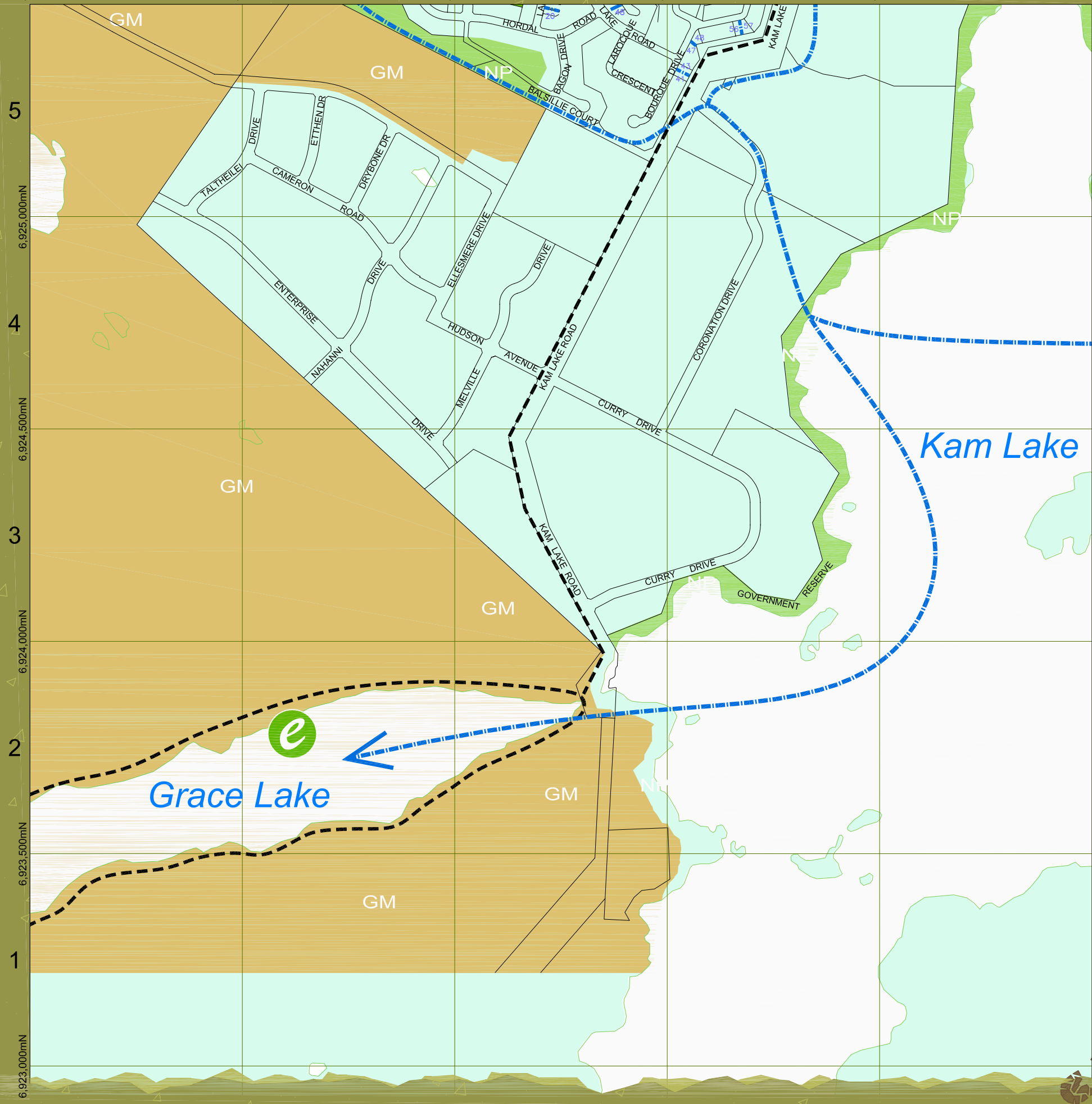
### Waterfront

- 300 Giant Mine Waterfront (M-17)
- 301 Waterfront Trail System
- 302 Waterfront Park (M-15)
- 303 Waterfront Viewpoint
- 304 Jackfish Ravine (L-13)
- 305 Back Bay Cemetery (L-13)
- 306 Waterfront Park (N-13)
- 307 Two Point Mooring Area (N-14)
- 308 Waterfront Park (O-13)
- 309 Community Docks (O-13)
- 310 Waterfront Park/Viewpoint (O-13)
- 311 Viewpoint (N-12)
- 312 Viewpoint (N-12)
- 313 Franklin Ave. Walkway (N-12)
- 314 Day Use/Picnic Area (O-12)
- 315 Waterfront Park/Viewpoint (O-12)
- 316 Jolliffe Island Park (O-11)
- 317 Floating Home Mooring (N-11, N10)
- 318 Viewpoint (N-11)
- 319 Woodyard Heritage Waterfront Park (N-11)
- 320 Dettah Ice Road Access (M-10)
- 321 Viewpoint (N-10)
- 322 Community Docks (N-9)
- 323 Viewpoint (N-8)
- 324 Waterfront Trail System
- 325 Waterfront Park/Day Use (O-7)
- 326 Milner Boat Launch (N-7)
- 327 Fuel Barge Docking Facility (N-6)

This map is for DISCUSSION purposes only. Information provided is based on the best material at the time of production. Locations and features are approximate.



632,000mE 632,500mE 633,000mE 633,500mE 634,000mE



# 2015 Vision



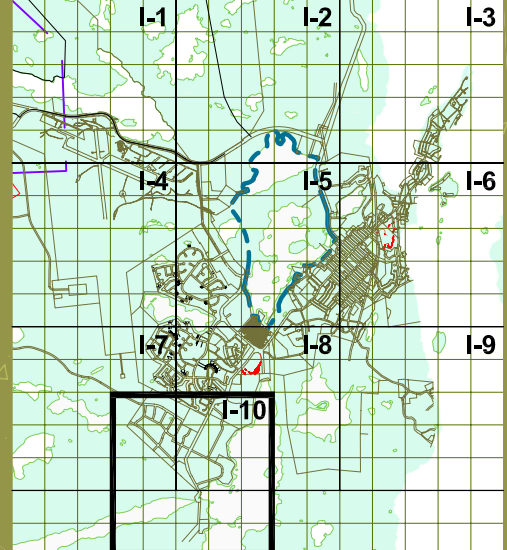
City of Yellowknife  
 Integrated Parks, Trails and  
 Open Space Development Study  
 September 2005

Map B I-10



## Legend:

- PR Parks and Recreational Areas
- NP Natural Preservation/Greenspace
- Walking Trails
- Ski Trails
- Dog Sled Derby Trail
- Snowmobile Route
- Snowmobile Off Limits
- GM Growth Management
- Capital Area
- Municipal Boundary
- Seismic Reserve
- Proposed Trail System
- Proposed Trail System (subject to change upon review)



- Ecological Importance (see Map E)
- Day Use/Picnic Area
- Waterfront Park
- Cemetary
- Off Leash Dog Area
- Pedestrian Crossing
- View Point
- Wildlife Viewing
- Heritage Site
- Mining Heritage Site

### PR Public Parks and Recreation

- 100 Latham Island Park (N-13)
- 101 Bush Pilots Memorial Park (N-12)
- 102 Jolliffe Island (O-12)
- 103 Schoold Draw Rotary Park (M-10)
- 104 School Draw Park (M-9)
- 105 Public Park (M-9)
- 106 Olexin Park (L-8)
- 107 Forrest Drive Park (K-8,L-7)
- 108 Public Park (L-8)
- 109 Public Park (K-8)
- 110 Public Park (K-9)
- 111 Samba'ke Park (K-9)
- 112 McNiven Beach (J-8)
- 113 Past Gerry Murphy Arena Site (K-9)
- 114 Public Park (G-6)
- 115 Frame Lake South Tennis Courts (I-7)
- 116 Bristol Memorial Park (G-12, H-12)
- 117 Public Park (G-6)
- 118 Public Park (G-6)
- 119 Ruth Inch Memorial Pool (J-8)
- 120 Public Library (L-9)
- 121 Tennis Courts (J-8)
- 122 Parker Recreational Field (F-7)

- 123 Yellowknife Community Arena (J-8)
- 124 Public Park (F-8, G-8)
- 125 Doombos Park (L-10)
- 126 St. Joseph's Playing Field (H-7)
- 127 Lakeview Cemetery (H-11, H-12)
- 128 Public Park (O-13)
- 129 Public Park (O-13)
- 130 Fritz Thell Memorial Park (M-11)
- 131 Tommy Forrest Ball Park (K-8)
- 132 Yellowknife Ski Club (L-14)
- 133 Soccer and Ball Field at William McDonald Junior High (J-7)
- 134 Playing Field at Sir John Franklin High School (M-9)
- 135 Playing Field at Mildred Hall Elementary School (K-9)
- 136 Playing Field at Range Lake North School (G-9)
- 137 Jeske Park (G-9)
- 138 Yellowknife Golf Club (not shown)
- 139 Yellowknife Curling Club (J-8)
- 140 Yellowknife Multiplex (I-7)
- 141 Outdoor Ice Rink (K-10)

### Institutional Facilities

- 200 Solid Waste Facility (K-14)
- 201 Municipal Boat Launch (N-12)
- 202 St. Patrick High School (L-10, M-10)
- 203 Weledeh School (L-10, M-10)
- 204 Sir John Franklin High School (M-9)
- 205 Aurora College (K-9)
- 206 JH Sissons School (K-8)
- 207 Allain St. Cyr School (J-7)
- 208 William McDonald School (J-7)
- 209 Yellowknife Fire Department (I-7)
- 210 NJ Macpherson School (G-6)
- 211 St. Joseph School (H-7)
- 212 Range Lake North School (G-9)
- 213 Lakeview Cemetery (H-11)
- 214 Hospital (H-8)
- 215 Mildred Hall School (K-9)
- 216 City Hall (K-10)
- 217 RCMP (K-10)
- 218 DND (K-10)
- 219 Court House (L-10)
- 220 Visitor's Centre (K-10)
- 221 Museum (K-10)
- 222 Legeslatlve Assembly (J-11)

### Waterfront

- 300 Giant Mine Waterfront (M-17)
- 301 Waterfront Trail System
- 302 Waterfront Park (M-15)
- 303 Waterfront Viewpoint
- 304 Jackfish Ravine (L-13)
- 305 Back Bay Cemetery (L-13)
- 306 Waterfront Park (N-13)
- 307 Two Point Mooring Area (N-14)
- 308 Waterfront Park (O-13)
- 309 Community Docks (O-13)
- 310 Waterfront Park/Viewpoint (O-13)
- 311 Viewpoint (N-12)
- 312 Viewpoint (N-12)
- 313 Franklin Aves Walkway (N-12)
- 314 Day Use/Picnic Area (O-12)
- 315 Waterfront Park/Viewpoint (O-12)
- 316 Jolliffe Island Park (O-11)
- 317 Floating Home Mooring (N-11, N10)
- 318 Viewpoint (N-11)
- 319 Woodyard Heritage Waterfront Park (N-11)
- 320 Dettain Ice Road Access (M-10)
- 321 Viewpoint (N-10)
- 322 Community Docks (N-9)
- 323 Viewpoint (N-8)
- 324 Waterfront Trail System
- 325 Waterfront Park/Day Use (O-7)
- 326 Hilarmer Boat Launch (N-7)
- 327 Fuel Barge Docking Facility (N-6)

This map is for DISCUSSION purposes only. Information provided is based on the best material at the time of production. Locations and features are approximate.

